



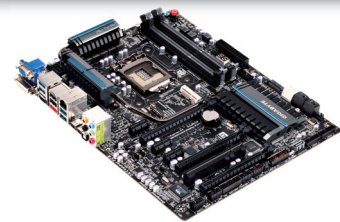
4K Collage Display Technology: Technical Setup Guide

This is a short guide explaining how to use Intel's Collage Display Technology, using a compatible GIGABYTE 7 series dual Thunderbolt® motherboard, onboard Intel® HD4000 processor graphics* and four standard definition displays.

What You Will Need

1. Motherboard

A PC built using any GIGABYTE 7 series dual Thunderbolt® motherboard.



2. Processor

A 3rd generation Intel® Core™ i5 or Core™ i7 processor supporting Intel®HD4000 processor graphics.*



3. HD Displays

Four displays supporting 1920 x 1200 or 1900 x 1080 native resolutions with DisplayPort interfaces. For Intel Collage Vertical Mode you may also require a stand to hold the four displays in position.



4. Intel Collage Driver

The latest Intel Collage Driver is available from the GIGABYTE official website: <http://www.gigabyte.com/>

5. DisplayPort Splitter Adapters

Finally, you also need two DisplayPorts splitter Adapters plus DisplayPort cables that allows you connect four displays using the onboard Mini DisplayPorts of your GIGABYTE motherboard.



*Note: You can find a more detailed component compatibility list here.

Installation

1. Connect the PC

First, connect the two display port cables to the Mini DisplayPorts on the motherboard back panel. Each of these DisplayPort cables can then be connected to the splitter adapter.

Note: Depending on which splitter adapter you are using, you may need to use DisplayPort to Mini DisplayPort adapter cables.



2. Connect the DisplayPort splitter adapters

Now you can connect the two additional DisplayPort cables from each of the two splitter adapters. These will then be used to connect your standard HD displays.



3. Connect the Four Displays

Next you can connect the four DisplayPort cables coming from the two splitter adapters to the respective displays. In the image below you can see the four displays setup in vertical mode.



4. Install the Intel® Collage driver

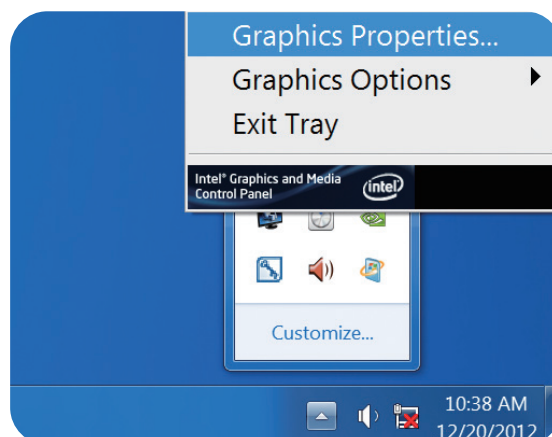
This is a special driver developed by Intel and GIGABYTE that allows you create a 4K UltraHD resolution (3840 x 2400 pixel) desktop environment across your four standard HD displays. You can download the specific Intel® driver for your motherboard at these product pages:

- GIGABYTE Z77X-UP5 TH – [Download Page](#)
- GIGABYTE Z77X-UP4 TH – [Download Page](#)
- GIGABYTE Z77MX-D3H TH - [Download Page](#)

Follow the onscreen instructions during the installation process as normal. You may be asked to restart your system.

5. Configure the Intel Collage Driver

Once installed, you can find the Intel Graphics and Media Control Panel in the bottom right corner of the screen. Right click the icon and select Graphics Properties. This is the software used to control and configure the Intel® Collage Driver.



For Vertical Mode on four displays, first you must select Clone Mode from the 'Operating Mode' drop-down menu. Then select a screen resolution of 3840 x 2400 or 3840 x 2160 depending on the native resolution of your displays.



For 'Horizontal Mode' you must also select 'Clone Mode' from the 'Operating Mode' drop-down menu, then a screen resolution of either 7680 x 1200 or 7680 x 1080 depending on the native resolution of your displays.