

GIGABYTE™

Intel-based Server Solutions

Servers / Motherboards / Barebone Servers / Accessories



2025 1H



About Giga Computing

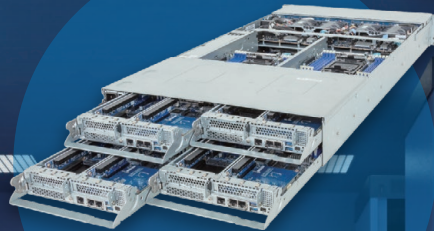
Giga Computing Technology is an industry innovator and leader in the enterprise computing market. Having spun off from GIGABYTE, we maintain hardware expertise in manufacturing and product design, while operating as a standalone business that can drive more investment into core competencies. We offer a complete product portfolio that addresses all workloads from the data center to edge including traditional and emerging workloads in HPC and AI to data analytics, 5G/edge, cloud computing, and more. Our longstanding partnerships with key technology leaders ensure that our new products will be the most advanced and launch with new partner platforms. Our systems embody performance, security, scalability, and sustainability.

GPU Server (P. 3)



Offering industry leading GPU density due to excellent thermal and mechanical design, and built for HPC, AI, and high-performance parallel processing

High-density Server (P. 10)



Combining four hot-swappable nodes in a 2U chassis, offering extreme CPU compute density excellent for HPC, HCI, and edge computing

Storage Server (P. 9)



Designed to accommodate an incredible volume of hard drives and to be compatible with modern storage software

Rack Server (P. 13)



1U and 2U general-purpose systems, offering the best balance of compute, memory, storage, and expandability

Edge Server (P. 28)



1U and 2U short depth servers, moving data collection away from data centers and improving latency

Tower Server / Workstation (P. 31)



Deliver simplicity, versatility and high performance for animation studios, and software developers

Direct Liquid Cooling (P. 32)



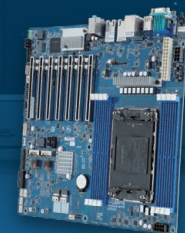
Efficient cooling & heat dissipation for performance demanding servers are possible with direct to chip liquid cooling

Immersion Cooling (P. 34)



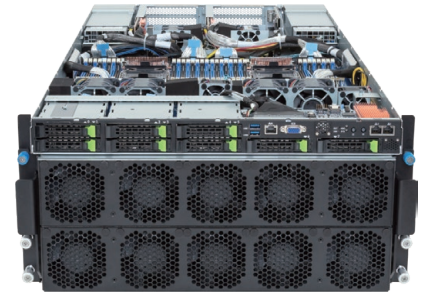
Submerging servers, for any enterprise application, in a single-phase immersion cooling solution produces the most efficient outcome

Motherboard (P. 36)



Single and dual socket options supporting Gen4/Gen5 NVMe drives and PCIe 4.0 and/or 5.0 lanes

GPU Server



Model	G893-SD1-AAX3 / AAX5	G593-SD1 / SD2	G593-SX1-AAX1
Motherboard	MSB3-PE0	[SD1] MSB3-G41 [SD2] MSB3-G40	MSB3-G41
Form Factor	8U (W447 x H351 x D900 mm)	5U (W447 x H219.7 x D945 mm)	5U (W447 x H221.2 x D965 mm)
GPU	[G893-SD1-AAX3] NVIDIA HGX™ H200 8-GPU (8-root ports) [G893-SD1-AAX5] NVIDIA HGX™ B200 8-GPU (8-root ports)	[G593-SD1-AAX1] NVIDIA HGX™ H100 8-GPU (8-root ports) [G593-SD1-AAX3] NVIDIA HGX™ H200 8-GPU (8-root ports) [G593-SD2-AAX1] NVIDIA HGX™ H100 8-GPU (4-root ports)	[G593-SX1-AAX1] AMD Instinct™ MI300X 8-GPU (8-root ports)
CPU	5th/4th Gen Intel® Xeon® Scalable Intel® Xeon® CPU Max Series Dual processors, LGA4677	5th/4th Gen Intel® Xeon® Scalable Intel® Xeon® CPU Max Series Dual processors, LGA4677 TDP up to 350W	5th/4th Gen Intel® Xeon® Scalable Intel® Xeon® CPU Max Series Dual processors, LGA4677 TDP up to 350W
Chipset	Intel® C741 chipset	Intel® C741 chipset	Intel® C741 chipset
Memory	8-Channel DDR5 RDIMM, 32 x DIMMs Up to 5600 MT/s (1DPC), 4400 MT/s (2DPC) ^[2]	8-Channel DDR5 RDIMM, 32 x DIMMs Up to 5600 MT/s (1DPC), 4400 MT/s (2DPC) ^[2]	8-Channel DDR5 RDIMM, 32 x DIMMs Up to 5600 MT/s (1DPC), 4400 MT/s (2DPC) ^[2]
LAN	2 x 10Gb/s LAN 1 x MLAN	2 x 10Gb/s LAN 1 x MLAN	2 x 10Gb/s LAN 1 x MLAN
Storage	Front hot-swap: 8 x 2.5" Gen5 NVMe/SATA/SAS4 *SAS card is required to support SAS drives	Front hot-swap: 8 x 2.5" Gen5 NVMe/SATA/SAS4 *SAS card is required to support SAS drives	Front hot-swap: 8 x 2.5" Gen5 NVMe/SATA/SAS4 *SAS card is required to support SAS drives
Expansion Slots	4 x PCIe 5.0 x16 FHHL (Dual slot) 8 x PCIe 5.0 x16 FHHL (Single slot)	4 x PCIe 5.0 x16 FHHL - Compatible with NVIDIA BlueField®-3 DPUs 8 x PCIe 5.0 x16 LP	4 x PCIe 5.0 x16 FHHL 8 x PCIe 5.0 x16 LP
I/O Ports	Front: 2 x USB 3.2 Gen1 1 x VGA 2 x RJ45 1 x MLAN (default) Rear: 1 x MLAN	Front: 2 x USB 3.2 Gen1 1 x VGA 2 x RJ45 1 x MLAN (default) Rear: 1 x MLAN	Front: 2 x USB 3.2 Gen1 1 x VGA 2 x RJ45 1 x MLAN (default) Rear: 1 x MLAN
Security	Optional TPM 2.0 module: CTM010	Optional TPM 2.0 module: CTM010	Optional TPM 2.0 module: CTM010
Power Supply	6+6 redundant power supply 3000W 80+ Titanium	4+2 redundant power supply 3000W 80+ Titanium	4+2 redundant power supply 3000W 80+ Titanium
System Management	ASPEED® AST2600 BMC GIGABYTE Management Console	ASPEED® AST2600 BMC GIGABYTE Management Console	ASPEED® AST2600 BMC GIGABYTE Management Console
Other Features	Dual ROM architecture	Dual ROM architecture NVIDIA-Certified Systems™	Dual ROM architecture

^[1] MRDIMMs are only supported with Intel® Xeon® 6 Processors with P-cores and in a 1DPC configuration.

^[2] 4th Gen Intel Xeon Scalable Processors & Intel Xeon CPU Max Series support up to 4800MT/s (1DPC) and 4400MT/s (2DPC).
5th Gen Intel Xeon Scalable Processors support up to 5600MT/s (1DPC) and 4400MT/s (2DPC).

GPU Server



Model	G494-SB0-AAP1	G493-SB0-AAP1	G493-SB1-AAP1
Motherboard	MSB4-G40	MSB3-G40	MSB3-G40
Form Factor	4U (W448 x H176 x D880 mm)	4U (W448 x H176 x D880 mm)	4U (W448 x H176 x D880 mm)
GPU	Supports 8 x Dual slot Gen5 GPUs	Supports 8 x Dual slot Gen5 GPUs	Supports 10 x Dual slot Gen5 GPUs
CPU	Intel® Xeon® 6 Processors (6700E-series, 6700P-series, 6500P-series) Dual processors, LGA4710 TDP up to 350W	5th/4th Gen Intel® Xeon® Scalable Intel® Xeon® CPU Max Series Dual processors, LGA4677 TDP up to 350W	5th/4th Gen Intel® Xeon® Scalable Intel® Xeon® CPU Max Series Dual processors, LGA4677 TDP up to 350W
Chipset	System on Chip	Intel® C741 chipset	Intel® C741 chipset
Memory	8-Channel DDR5 RDIMM/MRDIMM, 32 x DIMMs RDIMM: Up to 6400MT/s (1DPC), 5200MT/s (2DPC) MRDIMM: Up to 8000MT/s ^[1]	8-Channel DDR5 RDIMM, 32 x DIMMs Up to 5600 MT/s (1DPC), 4400 MT/s (2DPC) ^[2]	8-Channel DDR5 RDIMM, 32 x DIMMs Up to 5600 MT/s (1DPC), 4400 MT/s (2DPC) ^[2]
LAN	2 x 10Gb/s LAN 1 x MLAN	2 x 10Gb/s LAN 1 x MLAN	2 x 10Gb/s LAN 1 x MLAN
Storage	Front hot-swap: 8 x 3.5"/2.5" Gen5 NVMe/SATA/SAS 4 x 3.5"/2.5" SATA/SAS *Storage card is required to support SATA/SAS	Front hot-swap: 8 x 3.5"/2.5" Gen5 NVMe/SATA 4 x 3.5"/2.5" SATA Internal M.2: 1 x M.2 (PCIe 3.0 x1)	Front hot-swap: 12 x 3.5"/2.5" Gen5 NVMe/SATA/SAS4 *SAS card is required to support SAS drives Internal M.2: 1 x M.2 (PCIe 3.0 x1)
Expansion Slots	8 x PCIe 5.0 x16 FHFL for GPUs 1 x PCIe 5.0 x8 LP	8 x PCIe 5.0 x16 FHFL for GPUs	10 x PCIe 5.0 x16 FHFL for GPUs 2 x PCIe 5.0 x16 LP
I/O Ports	Front: 2 x USB 3.2 Gen1, 1 x VGA, 2 x RJ45, 1 x MLAN Rear: N/A	Front: 2 x USB 3.2 Gen1, 1 x VGA, 2 x RJ45, 1 x MLAN Rear: N/A	Front: 2 x USB 3.2 Gen1, 1 x VGA, 2 x RJ45, 1 x MLAN Rear: N/A
Security	Optional TPM2.0 module: CTM012 Optional PROT module: CSC1200	Optional TPM 2.0 module: CTM010	Optional TPM 2.0 module: CTM010
Power Supply	3+1 redundant power supply 3000W 80+ Titanium	3+1 redundant power supply 3000W 80+ Titanium	3+1 redundant power supply 3000W 80+ Titanium
System Management	ASPEED® AST2600 BMC GIGABYTE Management Console	ASPEED® AST2600 BMC GIGABYTE Management Console	ASPEED® AST2600 BMC GIGABYTE Management Console
Other Features	Dual ROM architecture	Dual ROM architecture NVIDIA-Certified Systems™	Dual ROM architecture

GPU Server



Model	G493-SB2-AAP1	G493-SB3-AAP1	G493-SB4-AAP1
Motherboard	MSB3-G40	MSB3-G40	MSB3-G40
Form Factor	4U (W448 x H176 x D880 mm)	4U (W448 x H176 x D880 mm)	4U (W448 x H176 x D880 mm)
GPU	Supports 8 x Dual slot Gen5 GPUs	Supports 8 x Dual slot Gen5 GPUs	Optimized for NVIDIA OVX™ L40S Server with 8 GPUs configuration
CPU	5th/4th Gen Intel® Xeon® Scalable Intel® Xeon® CPU Max Series Dual processors, LGA4677 TDP up to 350W	5th/4th Gen Intel® Xeon® Scalable Intel® Xeon® CPU Max Series Dual processors, LGA4677 TDP up to 350W	5th/4th Gen Intel® Xeon® Scalable Intel® Xeon® CPU Max Series Dual processors, LGA4677 NVIDIA OVX spec: 2 x Intel® Xeon® Gold 8480+
Chipset	Intel® C741 chipset	Intel® C741 chipset	Intel® C741 Chipset
Memory	8-Channel DDR5 RDIMM, 32 x DIMMs Up to 5600 MT/s (1DPC), 4400 MT/s (2DPC) [2]	8-Channel DDR5 RDIMM, 32 x DIMMs Up to 5600 MT/s (1DPC), 4400 MT/s (2DPC) [2]	8-Channel DDR5 RDIMM, 32 x DIMMs Up to 5600 MT/s (1DPC), 4400 MT/s (2DPC) [2] NVIDIA OVX spec: Minimum 768GB DDR5 ECC
LAN	2 x 10Gb/s LAN 1 x MLAN	2 x 10Gb/s LAN 1 x MLAN	2 x 10Gb/s LAN 1 x MLAN
Storage	Front hot-swap: 12 x 3.5"/2.5" Gen5 NVMe/SATA/SAS4 *SAS card is required to support SAS drives Internal M.2: 1 x M.2 (PCIe 3.0 x1)	Front hot-swap: 12 x 3.5"/2.5" Gen5 NVMe/SATA/SAS4 *SAS card is required to support SAS drives Internal M.2: 1 x M.2 (PCIe 3.0 x1)	Front hot-swap: 12 x 3.5"/2.5" Gen5 NVMe/SATA/SAS4 NVIDIA OVX spec: 1 x 1TB NVMe Host Boot Drive, 2 x 4TB NVMe Host Storage Internal M.2: 1 x M.2 (PCIe 3.0 x1)
Expansion Slots	8 x PCIe 5.0 x16 FHFL for GPUs 4 x PCIe 5.0 x16 FHFL 2 x PCIe 5.0 x16 LP	8 x PCIe 5.0 x16 FHFL for GPUs 10 x PCIe 5.0 x16 LP	8 x PCIe 5.0 x16 FHFL for GPUs 2 x PCIe 5.0 x16 FHFL 4 x PCIe 5.0 x16 LP 1 x PCIe 4.0 x16 LP NVIDIA OVX spec: 8 x NVIDIA L40S GPUs, 1 x BlueField-3 B3220 DPU, 4 x ConnectX-7 NICs
I/O Ports	Front: 2 x USB 3.2 Gen1, 1 x VGA, 2 x RJ45, 1 x MLAN Rear: N/A	Front: 2 x USB 3.2 Gen1, 1 x VGA, 2 x RJ45, 1 x MLAN Rear: N/A	Front: 2 x USB 3.2 Gen1, 1 x VGA, 2 x RJ45, 1 x MLAN Rear: N/A
Security	Optional TPM 2.0 module: CTM010	Optional TPM 2.0 module: CTM010	Optional TPM 2.0 module: CTM010
Power Supply	3+1 redundant power supply 3000W 80+ Titanium	3+1 redundant power supply 3000W 80+ Titanium	3+1 redundant power supply 3000W 80+ Titanium
System Management	ASPEED® AST2600 BMC GIGABYTE Management Console	ASPEED® AST2600 BMC GIGABYTE Management Console	ASPEED® AST2600 BMC GIGABYTE Management Console
Other Features	Dual ROM architecture	Dual ROM architecture NVIDIA-Certified Systems™	Dual ROM architecture NVIDIA-Certified Systems™ - OVX Servers

GPU Server

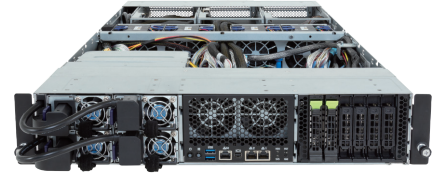
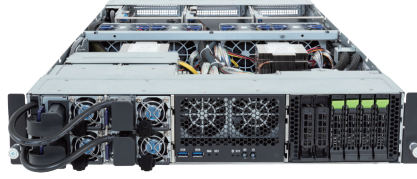


Model	G363-SR0-AAX1 / AAX3	G294-S41 / S42 / S43	G293-S41 / S42 / S43
Motherboard	MS63-HD2	MS44-G20	MS43-G20
Form Factor	3U (W448 x H130 x D800 mm)	2U (W448 x H87.5 x D850 mm)	2U (W448 x H87.5 x D800 mm)
GPU	[G363-SR0-AAX1] NVIDIA HGX™ H100 4-GPU [G363-SR0-AAX3] NVIDIA HGX™ H200 4-GPU	[G294-S41-AAP1] Supports 4 x Dual slot Gen5 GPU [G294-S42-AAP1] Supports 8 x Dual slot Gen5 GPU [G294-S43-AAP1] Supports 16 x Single slot Gen5 GPU	[G293-S41-AAP1] Supports 4 x Dual slot Gen5 GPU [G293-S42-AAP1] Supports 8 x Dual slot Gen5 GPU [G293-S43-AAP1] Supports 16 x Single slot Gen5 GPU
CPU	5th/4th Gen Intel® Xeon® Scalable Intel® Xeon® CPU Max Series Dual processors, LGA4677 TDP up to 350W	Intel® Xeon® 6 Processors (6700E-series, 6700P-series, 6500P-series) Dual processors, LGA4710	5th/4th Gen Intel® Xeon® Scalable Dual processors, LGA4677 TDP up to 225W
Chipset	Intel® C741 Chipset	System on Chip	Intel® C741 chipset
Memory	8-Channel DDR5 RDIMM, 16 x DIMMs Up to 5600 MT/s ^[2]	8-Channel DDR5 RDIMM/MRDIMM, 24 x DIMMs RDIMM: Up to 6400MT/s (1DPC), 5200MT/s (2DPC) MRDIMM: Up to 8000 MT/s ^[1]	8-Channel DDR5 RDIMM, 24 x DIMMs Up to 5600 MT/s (1DPC), 4400 MT/s (2DPC) ^[2]
LAN	2 x 10Gb/s LAN 2 x 1Gb/s LAN 1 x MLAN	2 x 10Gb/s LAN 1 x MLAN	2 x 10Gb/s LAN 1 x MLAN
Storage	Front hot-swap: 8 x 2.5" Gen5 NVMe/SATA/SAS *SAS card is required to support SAS drives Internal M.2: 1 x M.2 (PCIe 4.0 x4)	Front hot-swap: 8 x 2.5" Gen5 NVMe/SATA/SAS4 *SAS card is required to support SAS drives	Front hot-swap: 4 x 2.5" Gen5 NVMe/SATA/SAS 4 x 2.5" SATA/SAS *SAS card is required to support SAS drives
Expansion Slots	6 x PCIe 5.0 x16 LP	[S41] 4 x PCIe 5.0 x16 or 8 x PCIe 5.0 x8 FHFL [S42] 8 x PCIe 5.0 x16 FHFL for GPUs* [S43] 16 x PCIe 5.0 x16 FHFL for GPUs* *with PCIe switches 2 x PCIe 5.0 x16 LP	[S41] 4 x PCIe 5.0 x16 or 8 x PCIe 5.0 x8 FHFL [S42] 8 x PCIe 5.0 x16 FHFL for GPUs* [S43] 16 x PCIe 5.0 x16 FHFL for GPUs* *with PCIe switches 2 x PCIe 5.0 x16 LP
I/O Ports	Front: 2 x USB 3.2 Gen1, 1 x Mini-DP, 2 x RJ45, 1 x MLAN (default) Rear: 2 x RJ45, 1 x MLAN	Front: N/A Rear: 2 x USB 3.2 Gen1, 1 x VGA, 2 x RJ45, 1 x MLAN	Front: N/A Rear: 2 x USB 3.2 Gen1, 1 x VGA, 2 x RJ45, 1 x MLAN
Security	Optional TPM 2.0 module: CTM010	Optional TPM2.0 module: CTM012 Optional ProT module: CSC1200	Optional TPM 2.0 module: CTM010
Power Supply	2+1 redundant power supply 3000W 80+ Titanium	Dual redundant power supply 3000W 80+ Titanium	Dual redundant power supply 3000W 80+ Titanium
System Management	ASPEED® AST2600 BMC GIGABYTE Management Console	ASPEED® AST2600 BMC GIGABYTE Management Console	ASPEED® AST2600 BMC GIGABYTE Management Console
Other Features	Dual ROM architecture NVIDIA-Certified Systems™	Dual ROM architecture	Dual ROM architecture [S42/S43] NVIDIA-Certified Systems™



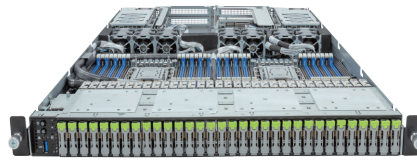
Model	G293-S45-AAP1	G293-S46-AAM1	G293-S47-AAP1
Motherboard	MS43-G21	MS43-G21	MS43-G21
Form Factor	2U (W448 x H87.5 x D800 mm)	2U (W448 x H87.5 x D800 mm)	2U (W448 x H87.5 x D800 mm)
GPU	Supports 8 x Dual slot Gen5 GPUs	Supports 4 x Dual slot Gen5 GPUs	Optimized for NVIDIA OVX™ L40S Server with 4 GPUs configuration
CPU	5th/4th Gen Intel® Xeon® Scalable Dual processors, LGA4677 TDP up to 225W	5th/4th Gen Intel® Xeon® Scalable Intel® Xeon® CPU Max Series Dual processors, LGA4677 TDP up to 350W	5th/4th Gen Intel® Xeon® Scalable Dual processors, LGA4677 TDP up to 225W NVIDIA OVX spec: 2 x Intel® Xeon® Gold 6448Y
Chipset	Intel® C741 chipset	Intel® C741 Chipset	Intel® C741 chipset
Memory	8-Channel DDR5 RDIMM, 16 x DIMMs Up to 5600 MT/s ^[2]	8-Channel DDR5 RDIMM, 16 x DIMMs Up to 5600 MT/s ^[2]	8-Channel DDR5 RDIMM, 16 x DIMMs Up to 5600 MT/s ^[2] NVIDIA OVX spec: Minimum 384GB DDR5 ECC
LAN	2 x 10Gb/s LAN 1 x MLAN	2 x 10Gb/s LAN 1 x MLAN	2 x 10Gb/s LAN 1 x MLAN
Storage	Front hot-swap: 8 x 2.5" SATA/SAS *SAS card is required to support SAS drives	Front hot-swap: 8 x 2.5" Gen5 NVMe/SATA/SAS *SAS card is required to support SAS drives	Front hot-swap: 8 x 2.5" Gen5 NVMe/SATA/SAS NVIDIA OVX spec: 1 x 1TB NVMe Host Boot Drive, 2 x 4TB NVMe Host Storage
Expansion Slots	8 x PCIe 5.0 x16 FHFL for GPUs 2 x PCIe 5.0 x16 LP	4 x PCIe 5.0 x16 FHFL for GPUs 2 x PCIe 5.0 x16 LP	4 x PCIe 5.0 x16 FHFL for GPUs 1 x PCIe 5.0 x16 FHFL 2 x PCIe 5.0 x16 LP NVIDIA OVX spec: 4 x NVIDIA L40S GPUs, 1 x BlueField-3 B3220 DPU, 2 x ConnectX-7 NICs
I/O Ports	Front: N/A Rear: 2 x USB 3.2 Gen1, 1 x VGA, 2 x RJ45, 1 x MLAN	Front: N/A Rear: 2 x USB 3.2 Gen1, 1 x VGA, 2 x RJ45, 1 x MLAN	Front: N/A Rear: 2 x USB 3.2 Gen1, 1 x VGA, 2 x RJ45, 1 x MLAN
Security	Optional TPM 2.0 module: CTM010	Optional TPM 2.0 module	Optional TPM 2.0 module: CTM010
Power Supply	Dual redundant power supply 3000W 80+ Titanium	Dual redundant power supply 2200W 80+ Titanium	Dual redundant power supply 3000W 80+ Titanium
System Management	ASPEED® AST2600 BMC GIGABYTE Management Console	ASPEED® AST2600 BMC GIGABYTE Management Console	ASPEED® AST2600 BMC GIGABYTE Management Console
Other Features	Dual ROM architecture	Dual ROM architecture	Dual ROM architecture NVIDIA-Certified Systems™ - OVX Servers

MGX Server



Model	XV24-AX0-AAJ1	XV24-SX0-AAJ1	XV24-SU0-AAJ1
Motherboard	MAX4-MG0	MSX4-MG0	MSU4-MG0
Form Factor	2U (W438 x H87.5 x D900 mm) NVIDIA MGX™ modular server design	2U (W438 x H87.5 x D900 mm) NVIDIA MGX™ modular server design	2U (W438 x H87.5 x D900 mm) NVIDIA MGX™ modular server design
CPU	Intel® Xeon® 6 Processors (Intel Xeon 6900-Series) Dual processors, LGA 7529 TDP up to 500W	Intel® Xeon® 6 Processors (6700E-series, 6700P-series, 6500P-series) Dual processors, LGA 4710 TDP up to 350W	Intel® Xeon® 6 Processors (6700E-series, 6700P-series, 6500P-series) Single processor, LGA 4710 TDP up to 350W
Chipset	System on Chip	System on Chip	System on Chip
Memory	12-Channel RDIMM/MRDIMM 24 x DDR5 DIMMs RDIMM: Up to 6400 MT/s MRDIMM: Up to 8800 MT/s ^[1]	8-Channel RDIMM/MRDIMM 32 x DDR5 DIMMs RDIMM: Up to 6400MT/s (1DPC), 5200MT/s (2DPC) MRDIMM: Up to 8000 MT/s ^[1]	8-Channel RDIMM/MRDIMM 16 x DDR5 DIMMs RDIMM: Up to 6400MT/s (1DPC), 5200MT/s (2DPC) MRDIMM: Up to 8000 MT/s ^[1]
LAN	2 x 10Gb/s LAN 1 x MLAN	2 x 10Gb/s LAN 1 x MLAN	2 x 10Gb/s LAN 1 x MLAN
Storage	Front hot-swap: 6 x 2.5" Gen5 NVMe/SATA/SAS4 *Storage card is required to support SATA/SAS Internal M.2: 2 x M.2 (PCIe 5.0 x2)	Front hot-swap: 4 x 2.5" Gen5 NVMe/SATA/SAS4 *Storage card is required to support SATA/SAS Internal M.2: 2 x M.2 (PCIe 5.0 x2)	Front hot-swap: 2 x 2.5" Gen5 NVMe/SATA/SAS4 *Storage card is required to support SATA/SAS Internal M.2: 2 x M.2 (PCIe 5.0 x4)
Expansion Slots	4 x PCIe 5.0 x16 FHFL for GPUs 3 x PCIe 5.0 x16 FHFL	4 x PCIe 5.0 x16 FHFL for GPUs 3 x PCIe 5.0 x16 FHFL	4 x PCIe 5.0 x16 FHFL for GPUs 3 x PCIe 5.0 x16 FHFL
I/O Ports	Front: 2 x USB 3.2 Gen1 Rear: 2 x USB 3.2 Gen1 1 x Mini-DP 2 x RJ45 1 x MLAN	Front: 2 x USB 3.2 Gen1 Rear: 2 x USB 3.2 Gen1 1 x Mini-DP 2 x RJ45 1 x MLAN	Front: 2 x USB 3.2 Gen1 Rear: 2 x USB 3.2 Gen1 1 x Mini-DP 2 x RJ45 1 x MLAN
Security	Optional TPM2.0 module: CTM012 Optional PRoT module: CSC1200	Optional TPM2.0 module: CTM012 Optional PRoT module: CSC1200	Optional TPM2.0 module: CTM012 Optional PRoT module: CSC1200
Power Supply	2+2 redundant power supply 2000W 80+ Titanium	2+2 redundant power supply 2000W 80+ Titanium	2+2 redundant power supply 2000W 80+ Titanium
System Management	ASPEED® AST2600 BMC GIGABYTE Management Console	ASPEED® AST2600 BMC GIGABYTE Management Console	ASPEED® AST2600 BMC GIGABYTE Management Console
Other Features	Dual ROM architecture Supports 4 x Dual slot Gen5 GPUs	Dual ROM architecture Supports 4 x Dual slot Gen5 GPUs	Dual ROM architecture Supports 4 x Dual slot Gen5 GPUs

Storage Server



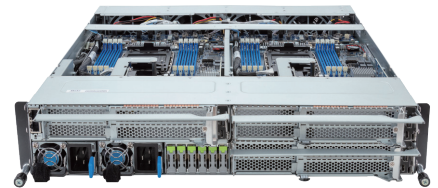
Model	S453-S70-AAV1	S183-SH0-AAV1 / AAJ1	S251-300
Motherboard	MS73-HB0	MSH3-ES0	MU71-SU0
Form Factor	4U (W482.6 x H177 x D625 mm)	1U (W438 x H43.5 x D730 mm)	2U (W438 x H87 x D880.5 mm)
CPU	5th/4th Gen Intel® Xeon® Scalable Dual processors, LGA4677 TDP up to 270W	5th/4th Gen Intel® Xeon® Scalable Intel® Xeon® CPU Max Series Dual processors, LGA4677 TDP up to 350W	2nd Gen Intel® Xeon® Scalable Intel® Xeon® W-3200 Single processors, LGA3647 TDP up to 205W
Chipset	Intel® C741 Chipset	Intel® C741 Chipset	Intel® C621 Chipset
Memory	8-Channel DDR5 RDIMM, 16 x DIMMs Up to 5600 MT/s ^[2]	8-Channel DDR5 RDIMM, 32 x DIMMs Up to 5600 MT/s (1DPC), 4400 MT/s (2DPC) ^[2]	6-Channel RDIMM/LRDIMM DDR4, 8 x DIMMs Up to 2933 MT/s
LAN	2 x 10Gb/s LAN 2 x 1Gb/s LAN 1 x MLAN	2 x 1Gb/s LAN 1 x MLAN	2 x 1Gb/s LAN 1 x MLAN
Storage	Front side: 24 x 3.5"/2.5 SATA/SAS hot-swap bays* Rear side: 12 x 3.5"/2.5 SATA/SAS hot-swap bays* 2 x 2.5" SATA bays for boot drives Default support: 2 x SATA on rear side *Broadcom SAS35x48 expander SAS card is required to enable the drive bays Internal M.2: 2 x M.2 (PCIe 4.0 x4)	Front side: 32 x 9.5mm E1.S NVMe hot-swap bays Optional compatible RAID Cards: NVMe/NVMe-oF RAID cards with SupremeRAID by Graid Technology (SR-1000-FD32, SR-1010-FD32) Support RAID 0/1/5/6/10 Internal M.2: 2 x M.2 (PCIe 3.0 x4 or SATA)	Side-accessed: 24 x 3.5" SATA/SAS hot-swap bays* Rear side: 2 x 2.5" SATA bays for boot drives Default support: 2 x SATA on rear side *Broadcom SAS35x36R expander SAS card is required to enable the drive bays Internal M.2: 1 x M.2 (PCIe 3.0 x4)
Expansion Slots	6 x PCIe 5.0 x16 LP	1 x PCIe 5.0 x16 FHHL 1 x PCIe 5.0 x16 (x16 or x8) FHHL 1 x PCIe 5.0 x16 (x0 or x8) FHHL	3 x PCIe 3.0 x16 (x16 or x8) LP 3 x PCIe 3.0 x8 (x0 or x8) LP 1 x PCIe 3.0 x4 LP
I/O Ports	Front: 2 x USB 3.2 Gen1 Rear: 2 x USB 3.2 Gen1 1 x VGA 1 x RJ45 COM 4 x RJ45 1 x MLAN	Front: 1 x USB 3.2 Gen1 Rear: 2 x USB 3.2 Gen1 1 x Mini-DP 2 x RJ45 1 x MLAN	Front: 2 x USB 3.2 Gen1 Rear: 4 x USB 3.2 Gen1 1 x VGA 1 x COM 2 x RJ45 1 x MLAN
Security	Optional TPM 2.0 module: CTM010	Optional TPM 2.0 module: CTM010	Optional TPM 2.0 module: CTM010
Power Supply	Dual redundant power supply 1600W 80+ Titanium	Dual redundant power supply [AAV1] 1600W 80+ Titanium [AAJ1] 2000W 80+ Titanium	Dual redundant power supply 1300W 80+ Platinum
System Management	ASPEED® AST2600 BMC GIGABYTE Management Console	ASPEED® AST2600 BMC GIGABYTE Management Console	ASPEED® AST2500 BMC GIGABYTE Management Console
Other Features	Onboard 12Gb/s SAS expander	Dual ROM architecture	Onboard 12Gb/s SAS expander

High Density Server



Model	H374-A80 / A81	H274-S60-AAW1	H274-S61-AAW1
Motherboard	MA84-HD0	MS64-HD0	MS64-HD0
Form Factor	3U 4 Nodes - Rear access (W447 x H130.8 x D895 mm)	2U 4 Nodes - Rear access (W440 x H87.5 x D877 mm)	2U 4 Nodes - Rear access (W440 x H87.5 x D877 mm)
CPU	Intel® Xeon® 6 Processors (6900-Series) Dual processors per node, LGA 7529 [H374-A80-AAW1] TDP up to 500W at 30°C ambient with 2 x LP cards [H374-A81-AAW1] TDP up to 500W at 35°C ambient with 2 x LP cards	Intel® Xeon® 6 Processors (6700E-series, 6700P-series, 6500P-series) Dual processors per node, LGA 4710 TDP up to 225W	Intel® Xeon® 6 Processors (6700E-series, 6700P-series, 6500P-series) Dual processors per node, LGA 4710 TDP up to 350W at 30°C ambient without OCP card
Chipset	System on Chip	System on Chip	System on Chip
Memory	12-Channel RDIMM/MRDIMM 96 x DDR5 DIMMs RDIMM: Up to 6400 MT/s MRDIMM: Up to 8800 MT/s ^[1]	8-Channel RDIMM/MRDIMM 64 x DDR5 DIMMs RDIMM: Up to 6400 MT/s MRDIMM: Up to 8000 MT/s ^[1]	8-Channel RDIMM/MRDIMM 64 x DDR5 DIMMs RDIMM: Up to 6400 MT/s MRDIMM: Up to 8000 MT/s ^[1]
LAN	8 x 1Gb/s LAN 4 x MLAN	8 x 1Gb/s LAN 4 x MLAN	8 x 1Gb/s LAN 4 x MLAN
Storage	Front hot-swap: [H374-A80] 24 x 2.5" Gen5 NVMe/SATA/SAS4 [H374-A81] 8 x 2.5" Gen5 NVMe/SATA/SAS4 *Storage card is required to support SATA/SAS	Front hot-swap: 24 x 2.5" Gen5 NVMe/SATA/SAS4 *SAS card is required to support SAS drives Optional internal M.2: 4 x M.2 (PCIe 4.0 x4)	Front hot-swap: 8 x 2.5" Gen5 NVMe/SATA/SAS4 *SAS card is required to support SAS drives Optional internal M.2: 4 x M.2 (PCIe 4.0 x4)
Expansion Slots	16 x PCIe 5.0 x16 LP	8 x PCIe 5.0 x16 LP 4 x OCP 3.0 Gen5 x16	4 x PCIe 5.0 x16 LP 4 x OCP 3.0 Gen5 x16
I/O Ports	Front: N/A Rear: 8 x USB 3.2 Gen1 4 x Mini-DP 8 x RJ45 4 x MLAN	Front: N/A Rear: 8 x USB 3.2 Gen1 4 x Mini-DP 8 x RJ45 4 x MLAN	Front: N/A Rear: 8 x USB 3.2 Gen1 4 x Mini-DP 8 x RJ45 4 x MLAN
Security	Optional TPM2.0 module: CTM012 Optional PROt module: CSC1200	Optional TPM2.0 module: CTM012 Optional PROt module: CSC1200	Optional TPM2.0 module: CTM012 Optional PROt module: CSC1200
Power Supply	Triple redundant power supply 3000W 80+ Titanium	Dual redundant power supply 3000W 80+ Titanium	Dual redundant power supply 3000W 80+ Titanium
System Management	ASPEED® AST2600 BMC ASPEED® AST2620 CMC GIGABYTE Management Console	ASPEED® AST2600 BMC ASPEED® AST2620 CMC GIGABYTE Management Console	ASPEED® AST2600 BMC ASPEED® AST2620 CMC GIGABYTE Management Console
Other Features	Dual ROM architecture Multiplexing Management Topology	Dual ROM architecture Multiplexing Management Topology	Dual ROM architecture Multiplexing Management Topology

High Density Server



Model	H263-S66-AAW1	H263-S67-AAW1	H223-S10-AAP1
Motherboard	MS63-HD1	MS63-HD1	MS13-HD0
Form Factor	2U 4 Nodes - Rear access (W440 x H87.5 x D840 mm)	2U 4 Nodes - Rear access (W440 x H87.5 x D840 mm)	2U 3 Nodes - Front access (W447.8 x H87.5 x D500 mm)
CPU	5th/4th Gen Intel® Xeon® Scalable Dual processors per node, LGA 4677 TDP up to 225W	5th/4th Gen Intel® Xeon® Scalable Intel® Xeon® CPU Max Series Dual processors per node, LGA 4677 TDP up to 350W at 35°C ambient without OCP card	5th/4th Gen Intel® Xeon® Scalable Intel® Xeon® CPU Max Series Single processor per node, LGA 4677 TDP up to 350W at 35°C ambient with 1 x LP card
Chipset	Intel® C741 Chipset	Intel® C741 Chipset	Intel® C741 Chipset
Memory	8-Channel RDIMM 64 x DDR5 DIMMs Up to 5600 MT/s ^[2]	8-Channel RDIMM 64 x DDR5 DIMMs Up to 5600 MT/s ^[2]	8-Channel RDIMM 24 x DDR5 DIMMs Up to 5600 MT/s ^[2]
LAN	4 x MLAN 1 x CMC	4 x MLAN 1 x CMC	2 x CMC MLAN
Storage	Front hot-swap: 24 x 2.5" Gen5 NVMe/SATA/SAS4 *SAS card is required to support SAS drives Optional internal M.2: 4 x M.2 (PCIe 4.0 x4)	Front hot-swap: 8 x 2.5" Gen5 NVMe/SATA/SAS4 *SAS card is required to support SAS drives Optional internal M.2: 4 x M.2 (PCIe 4.0 x4)	Front hot-swap: 6 x 9.5mm E1.S Gen4 NVMe Internal M.2: 3 x M.2 (SATA)
Expansion Slots	8 x PCIe 5.0 x16 LP 4 x OCP 3.0 Gen5 x16	4 x PCIe 5.0 x16 LP 4 x OCP 3.0 Gen5 x16	6 x PCIe 5.0 x16 FHHL 3 x PCIe 5.0 x16 LP 3 x PCIe 5.0 x8 LP
I/O Ports	Front: N/A Rear: 8 x USB 3.2 Gen1 4 x VGA 4 x RJ45 MLAN 1 x CMC	Front: N/A Rear: 8 x USB 3.2 Gen1 4 x VGA 4 x RJ45 MLAN 1 x CMC	Front: 3 x USB 3.2 Gen1 (Type-C) 3 x Mini-DP 2 x CMC MLAN Rear: N/A
Security	Optional TPM 2.0 module: CTM010	Optional TPM 2.0 module: CTM010	Optional TPM 2.0 module: CTM010
Power Supply	Dual redundant power supply 3000W 80+ Titanium *Optional 2+1 redundant configuration	Dual redundant power supply 3000W 80+ Titanium *Optional 2+1 redundant configuration	1+1 redundant power supply 3000W 80+ Titanium
System Management	ASPEED® AST2600 BMC ASPEED® AST2520 CMC GIGABYTE Management Console	ASPEED® AST2600 BMC ASPEED® AST2520 CMC GIGABYTE Management Console	ASPEED® AST2600 BMC ASPEED® AST2520 CMC GIGABYTE Management Console
Other Features	Dual ROM architecture Ring Topology Management (optional)	Dual ROM architecture Ring Topology Management (optional)	Dual ROM architecture Ring Topology Management

Rack Server



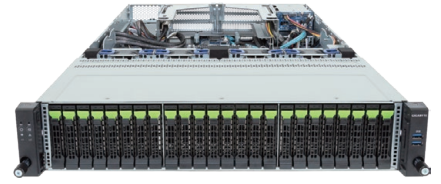
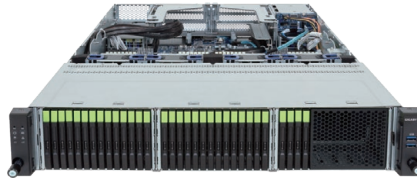
Model	R284-A90-AAL1	R284-A91-AAL1	R284-A92-AAL1
Motherboard	MA94-FS0	MA94-FS0	MA94-FS0
Form Factor	2U (W438 x H87.5 x D815 mm)	2U (W438 x H87.5 x D815 mm)	2U (W438 x H87.5 x D815 mm)
CPU	Intel® Xeon® 6 Processors (Intel Xeon 6900-Series) Dual processors, LGA 7529 TDP up to 500W	Intel® Xeon® 6 Processors (Intel Xeon 6900-Series) Dual processors, LGA 7529 TDP up to 500W	Intel® Xeon® 6 Processors (Intel Xeon 6900-Series) Dual processors, LGA 7529 TDP up to 500W
Chipset	System on Chip	System on Chip	System on Chip
Memory	12-Channel RDIMM/MRDIMM 24 x DDR5 DIMMs RDIMM: Up to 6400 MT/s MRDIMM: Up to 8800 MT/s ^[1]	12-Channel RDIMM/MRDIMM 24 x DDR5 DIMMs RDIMM: Up to 6400 MT/s MRDIMM: Up to 8800 MT/s ^[1]	12-Channel RDIMM/MRDIMM 24 x DDR5 DIMMs RDIMM: Up to 6400 MT/s MRDIMM: Up to 8800 MT/s ^[1]
LAN	2 x 1Gb/s LAN 1 x MLAN	2 x 1Gb/s LAN 1 x MLAN	2 x 1Gb/s LAN 1 x MLAN
Storage	Front hot-swap: 12 x 3.5"/2.5" Gen5 NVMe/SATA/SAS4 *Storage card is required to support SATA/SAS Rear hot-swap: 2 x 2.5" SATA/SAS4 *SAS card is required to support SAS drives Internal M.2: 2 x M.2 (PCIe 5.0 x4)	Front hot-swap: 36 x E3.S Gen5 NVMe Rear hot-swap: 2 x 2.5" SATA/SAS4 *SAS card is required to support SAS drives Internal M.2: 2 x M.2 (PCIe 5.0 x4)	Front hot-swap: 24 x 2.5" Gen5 NVMe/SATA/SAS4 *Storage card is required to support SATA/SAS Rear hot-swap: 2 x 2.5" SATA/SAS4 *SAS card is required to support SAS drives Internal M.2: 2 x M.2 (PCIe 5.0 x4)
Expansion Slots	2 x PCIe 5.0 x16 FHHL (Dual-slot) 2 x PCIe 5.0 x16 FHHL (Single-slot) 1 x PCIe 5.0 x16 LP 2 x OCP 3.0 Gen5 x16	1 x PCIe 5.0 x16 FHHL (Single-slot) 1 x OCP 3.0 Gen5 x16	2 x PCIe 5.0 x16 FHHL (Dual-slot) 2 x PCIe 5.0 x16 FHHL (Single-slot) 1 x OCP 3.0 Gen5 x16
I/O Ports	Front: 2 x USB 3.2 Gen1 Rear: 2 x USB 3.2 Gen1 1 x Mini-DP 2 x RJ45 1 x MLAN	Front: 2 x USB 3.2 Gen1 Rear: 2 x USB 3.2 Gen1 1 x Mini-DP 2 x RJ45 1 x MLAN	Front: 2 x USB 3.2 Gen1 Rear: 2 x USB 3.2 Gen1 1 x Mini-DP 2 x RJ45 1 x MLAN
Security	Optional TPM2.0 module: CTM012 Optional PRoT module: CSC1200	Optional TPM2.0 module: CTM012 Optional PRoT module: CSC1200	Optional TPM2.0 module: CTM012 Optional PRoT module: CSC1200
Power Supply	Dual redundant power supply 2700W 80+ Titanium	Dual redundant power supply 2700W 80+ Titanium	Dual redundant power supply 2700W 80+ Titanium
System Management	ASPEED® AST2600 BMC GIGABYTE Management Console	ASPEED® AST2600 BMC GIGABYTE Management Console	ASPEED® AST2600 BMC GIGABYTE Management Console
Other Features	Dual ROM architecture	Dual ROM architecture	Dual ROM architecture

Rack Server



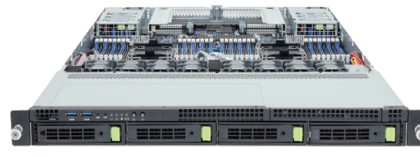
Model	R284-A93-AAS1	R284-A94-AAL1	R284-SF0-AAL1
Motherboard	MA94-FS0	MA94-FS0	MSF4-GP0
Form Factor	2U (W438 x H87.5 x D815 mm)	2U (W438 x H87.5 x D815 mm)	2U (W438 x H87.5 x D815 mm)
CPU	Intel® Xeon® 6 Processors (Intel Xeon 6900-Series) Dual processors, LGA 7529 TDP up to 500W	Intel® Xeon® 6 Processors (Intel Xeon 6900-Series) Dual processors, LGA 7529 TDP up to 500W	Intel® Xeon® 6 Processors (6700E-series, 6700P-series, 6500P-series) Dual processors, LGA 4710 TDP up to 350W
Chipset	System on Chip	System on Chip	System on Chip
Memory	12-Channel RDIMM/MRDIMM 24 x DDR5 DIMMs RDIMM: Up to 6400 MT/s MRDIMM: Up to 8800 MT/s ^[1]	12-Channel RDIMM/MRDIMM 24 x DDR5 DIMMs RDIMM: Up to 6400 MT/s MRDIMM: Up to 8800 MT/s ^[1]	8-Channel DDR5 RDIMM/MRDIMM, 32 x DIMMs RDIMM: Up to 6400MT/s (1DPC), 5200MT/s (2DPC) MRDIMM: Up to 8000 MT/s ^[1]
LAN	2 x 1Gb/s LAN 1 x MLAN	2 x 1Gb/s LAN 1 x MLAN	1 x MLAN
Storage	Front hot-swap: 12 x 3.5"/2.5" Gen5 NVMe/SATA/SAS4 *Storage card is required to support SATA/SAS Rear hot-swap: 2 x 2.5" SATA/SAS4 *SAS card is required to support SAS drives Internal M.2: 2 x M.2 (PCIe 5.0 x4)	Front hot-swap: 4 x 3.5"/2.5" Gen5 NVMe/SATA/SAS4* 8 x 3.5"/2.5" SATA/SAS4* Rear hot-swap: 2 x 2.5" SATA/SAS4* *Storage card is required to support SATA/SAS Internal M.2: 2 x M.2 (PCIe 5.0 x4) 1 x M.2 (PCIe 5.0 x2)	Front hot-swap: 12 x 2 x 3.5"/2.5" Gen5 NVMe/SATA/SAS4 *Storage card is required to support SATA/SAS Internal M.2: 1 x M.2 (PCIe 5.0 x4)
Expansion Slots	2 x PCIe 5.0 x16 FHFL for GPUs 2 x PCIe 5.0 x16 FHFL (Single-slot) 1 x PCIe 5.0 x16 LP 2 x OCP 3.0 Gen5 x16	6 x PCIe 5.0 x16 FHFL (Single-slot) 1 x PCIe 5.0 x16 LP 2 x OCP 3.0 Gen5 x16	4 x PCIe 5.0 x16 FHFL for GPUs 1 x PCIe 5.0 x16 FHFL (Single-slot) 1 x OCP 3.0 Gen5 x16
I/O Ports	Front: 2 x USB 3.2 Gen1 Rear: 2 x USB 3.2 Gen1 1 x Mini-DP 2 x RJ45 1 x MLAN	Front: 2 x USB 3.2 Gen1 Rear: 2 x USB 3.2 Gen1 1 x Mini-DP 2 x RJ45 1 x MLAN	Front: 2 x USB 3.2 Gen1 Rear: 2 x USB 3.2 Gen1 1 x Mini-DP 1 x MLAN
Security	Optional TPM2.0 module: CTM012 Optional PRoT module: CSC1200	Optional TPM2.0 module: CTM012 Optional PRoT module: CSC1200	Optional TPM2.0 module: CTM012 Optional PRoT module: CSC1200
Power Supply	Dual redundant power supply 3200W 80+ Titanium	Dual redundant power supply 2700W 80+ Titanium	Dual redundant power supply 2700W 80+ Titanium
System Management	ASPEED® AST2600 BMC GIGABYTE Management Console	ASPEED® AST2600 BMC GIGABYTE Management Console	ASPEED® AST2600 BMC GIGABYTE Management Console
Other Features	Dual ROM architecture Supports 2 x Dual slot Gen5 GPUs	Dual ROM architecture Onboard 24Gb/s SAS-4 expander	Dual ROM architecture Supports 4 x Dual slot Gen5 GPUs

Rack Server



Model	R284-S90-AAJ1	R284-S91-AAJ1	R284-S92-AAJ1
Motherboard	MS94-FS0	MS94-FS0	MS94-FS0
Form Factor	2U (W438 x H87.5 x D815 mm)	2U (W438 x H87.5 x D815 mm)	2U (W438 x H87.5 x D815 mm)
CPU	Intel® Xeon® 6 Processors (6700E-series, 6700P-series, 6500P-series) Dual processors, LGA 4710 TDP up to 350W	Intel® Xeon® 6 Processors (6700E-series, 6700P-series, 6500P-series) Dual processors, LGA 4710 TDP up to 350W	Intel® Xeon® 6 Processors (6700E-series, 6700P-series, 6500P-series) Dual processors, LGA 4710 TDP up to 350W
Chipset	System on Chip	System on Chip	System on Chip
Memory	8-Channel DDR5 RDIMM/MRDIMM, 32 x DIMMs RDIMM: Up to 6400MT/s (1DPC), 5200MT/s (2DPC) MRDIMM: Up to 8000 MT/s ^[1]	8-Channel DDR5 RDIMM/MRDIMM, 32 x DIMMs RDIMM: Up to 6400MT/s (1DPC), 5200MT/s (2DPC) MRDIMM: Up to 8000 MT/s ^[1]	8-Channel DDR5 RDIMM/MRDIMM, 32 x DIMMs RDIMM: Up to 6400MT/s (1DPC), 5200MT/s (2DPC) MRDIMM: Up to 8000 MT/s ^[1]
LAN	2 x 1Gb/s LAN 1 x MLAN	2 x 1Gb/s LAN 1 x MLAN	2 x 1Gb/s LAN 1 x MLAN
Storage	Front hot-swap: 12 x 3.5"/2.5" Gen5 NVMe//SATA/SAS4 *Storage card is required to support SATA/SAS Rear hot-swap: 2 x 2.5" SATA/SAS4 *SAS card is required to support SAS drives Internal M.2: 2 x M.2 (PCIe 5.0 x4)	Front hot-swap: 32 x E3.S Gen5 NVMe Rear hot-swap: 2 x 2.5" SATA/SAS4 *SAS card is required to support SAS drives Internal M.2: 2 x M.2 (PCIe 5.0 x4)	Front hot-swap: 24 x 2.5" Gen5 NVMe/SATA/SAS4 *Storage card is required to support SATA/SAS Rear hot-swap: 2 x 2.5" SATA/SAS4 *SAS card is required to support SAS drives Internal M.2: 2 x M.2 (PCIe 5.0 x4)
Expansion Slots	2 x PCIe 5.0 x16 FHHL (Dual-slot) 2 x PCIe 5.0 x16 FHHL (Single-slot) 2 x OCP 3.0 Gen5 x16	1 x PCIe 5.0 x16 FHHL (Single-slot) 1 x OCP 3.0 Gen5 x16	2 x PCIe 5.0 x16 FHHL (Dual-slot) 1 x PCIe 5.0 x16 FHHL (Single-slot) 1 x OCP 3.0 Gen5 x16
I/O Ports	Front: 2 x USB 3.2 Gen1 Rear: 2 x USB 3.2 Gen1 1 x Mini-DP 2 x RJ45 1 x MLAN	Front: 2 x USB 3.2 Gen1 Rear: 2 x USB 3.2 Gen1 1 x Mini-DP 2 x RJ45 1 x MLAN	Front: 2 x USB 3.2 Gen1 Rear: 2 x USB 3.2 Gen1 1 x Mini-DP 2 x RJ45 1 x MLAN
Security	Optional TPM2.0 module: CTM012 Optional PRoT module: CSC1200	Optional TPM2.0 module: CTM012 Optional PRoT module: CSC1200	Optional TPM2.0 module: CTM012 Optional PRoT module: CSC1200
Power Supply	1+1 redundant power supply 2000W 80+ Titanium	1+1 redundant power supply 2000W 80+ Titanium	1+1 redundant power supply 2000W 80+ Titanium
System Management	ASPEED® AST2600 BMC GIGABYTE Management Console	ASPEED® AST2600 BMC GIGABYTE Management Console	ASPEED® AST2600 BMC GIGABYTE Management Console
Other Features	Dual ROM architecture	Dual ROM architecture	Dual ROM architecture

Rack Server



Model	R284-S93-AAL1	R184-A90-AAJ1	R184-A92-AAJ1
Motherboard	MS94-FS0	MA94-FS0	MA94-FS0
Form Factor	2U (W438 x H87.5 x D815 mm)	1U (W438 x H43.5 x D815 mm)	1U (W438 x H43.5 x D815 mm)
CPU	Intel® Xeon® 6 Processors (6700E-series, 6700P-series, 6500P-series) Dual processors, LGA 4710 TDP up to 350W	Intel® Xeon® 6 Processors (Intel Xeon 6900-Series) Dual processors, LGA 7529 TDP up to 500W	Intel® Xeon® 6 Processors (Intel Xeon 6900-Series) Dual processors, LGA 7529 TDP up to 500W
Chipset	System on Chip	System on Chip	System on Chip
Memory	8-Channel DDR5 RDIMM/MRDIMM, 32 x DIMMs RDIMM: Up to 6400MT/s (1DPC), 5200MT/s (2DPC) MRDIMM: Up to 8000 MT/s ^[1]	12-Channel RDIMM/MRDIMM 24 x DDR5 DIMMs RDIMM: Up to 6400 MT/s MRDIMM: Up to 8800 MT/s ^[1]	12-Channel RDIMM/MRDIMM 24 x DDR5 DIMMs RDIMM: Up to 6400 MT/s MRDIMM: Up to 8800 MT/s ^[1]
LAN	2 x 1Gb/s LAN 1 x MLAN	2 x 1Gb/s LAN 1 x MLAN	2 x 1Gb/s LAN 1 x MLAN
Storage	Front hot-swap: 12 x 3.5"/2.5" Gen5 NVMe/SATA/SAS4 *Storage card is required to support SATA/SAS Rear hot-swap: 2 x 2.5" SATA/SAS4 *SAS card is required to support SAS drives Internal M.2: 2 x M.2 (PCIe 5.0 x4)	Front hot-swap: 4 x 3.5"/2.5" Gen5 NVMe/SATA/SAS4 *Storage card is required to support SATA/SAS Internal M.2: 2 x M.2 (PCIe 5.0 x4) 1 x M.2 (PCIe 5.0 x2)	Front hot-swap: 12 x 2.5" Gen5 NVMe/SATA/SAS4 *Storage card is required to support SATA/SAS Internal M.2: 2 x M.2 (PCIe 5.0 x4) 1 x M.2 (PCIe 5.0 x2)
Expansion Slots	2 x PCIe 5.0 x16 FHFL for GPUs 2 x PCIe 5.0 x16 FHHL (Single-slot) 2 x OCP 3.0 Gen5 x16	2 x PCIe 5.0 x16 FHHL 2 x OCP 3.0 Gen5 x16	2 x PCIe 5.0 x16 FHHL 2 x OCP 3.0 Gen5 x16
I/O Ports	Front: 2 x USB 3.2 Gen1 Rear: 2 x USB 3.2 Gen1 1 x Mini-DP 2 x RJ45 1 x MLAN	Front: 2 x USB 3.2 Gen1 Rear: 2 x USB 3.2 Gen1 1 x Mini-DP 2 x RJ45 1 x MLAN	Front: 1 x USB 3.2 Gen1 Rear: 2 x USB 3.2 Gen1 1 x Mini-DP 2 x RJ45 1 x MLAN
Security	Optional TPM2.0 module: CTM012 Optional PRoT module: CSC1200	Optional TPM2.0 module: CTM012 Optional PRoT module: CSC1200	Optional TPM2.0 module: CTM012 Optional PRoT module: CSC1200
Power Supply	1+1 redundant power supply 2700W 80+ Titanium	Dual redundant power supply 2000W 80+ Titanium	Dual redundant power supply 2000W 80+ Titanium
System Management	ASPEED® AST2600 BMC GIGABYTE Management Console	ASPEED® AST2600 BMC GIGABYTE Management Console	ASPEED® AST2600 BMC GIGABYTE Management Console
Other Features	Dual ROM architecture Supports 2 x Dual slot Gen5 GPUs	Dual ROM architecture	Dual ROM architecture

Rack Server



Model	R184-S90-AAV1	R184-S91-AAV1	R184-S92-AAV1	R184-SF1-AAJ1
Motherboard	MS94-FS0	MS94-FS0	MS94-FS0	MSF4-GP0
Form Factor	1U (W438 x H43.5 x D815 mm)	1U (W438 x H43.5 x D815 mm)	1U (W438 x H43.5 x D815 mm)	1U (W438 x H43.5 x D815 mm)
CPU	Intel® Xeon® 6 Processors (6700E/6700P/6500P-series) Dual processors, LGA 4710 TDP up to 350W	Intel® Xeon® 6 Processors (6700E/6700P/6500P-series) Dual processors, LGA 4710 TDP up to 350W	Intel® Xeon® 6 Processors (6700E/6700P/6500P-series) Dual processors, LGA 4710 TDP up to 350W	Intel® Xeon® 6 Processors (6700E/6700P/6500P-series) Dual processors, LGA 4710 TDP up to 350W
Chipset	System on Chip	System on Chip	System on Chip	System on Chip
Memory	8-Channel RDIMM/MRDIMM 32 x DDR5 DIMMs RDIMM: 6400MT/s (1DPC), 5200MT/s (2DPC) MRDIMM: Up to 8000 MT/s ^[1]	8-Channel RDIMM/MRDIMM 32 x DDR5 DIMMs RDIMM: 6400MT/s (1DPC), 5200MT/s (2DPC) MRDIMM: Up to 8000 MT/s ^[1]	8-Channel RDIMM/MRDIMM 32 x DDR5 DIMMs RDIMM: 6400MT/s (1DPC), 5200MT/s (2DPC) MRDIMM: Up to 8000 MT/s ^[1]	8-Channel RDIMM/MRDIMM 32 x DDR5 DIMMs RDIMM: 6400MT/s (1DPC), 5200MT/s (2DPC) MRDIMM: Up to 8000 MT/s ^[1]
LAN	2 x 1Gb/s LAN 1 x MLAN	2 x 1Gb/s LAN 1 x MLAN	2 x 1Gb/s LAN 1 x MLAN	1 x MLAN
Storage	Front hot-swap: 4 x 3.5"/2.5" Gen5 NVMe/SATA/SAS4 *Storage card is required to support SATA/SAS Internal M.2: 2 x M.2 (PCIe 5.0 x4) 1 x M.2 (PCIe 5.0 x2)	Front hot-swap: 6 x 9.5mm E1.5 NVMe 8 x 2.5" Gen5 NVMe/SATA/SAS4 *Storage card is required to support SATA/SAS Internal M.2: 2 x M.2 (PCIe 5.0 x4) 1 x M.2 (PCIe 5.0 x2)	Front hot-swap: 12 x 2.5" Gen5 NVMe/SATA/SAS4 *Storage card is required to support SATA/SAS Internal M.2: 2 x M.2 (PCIe 5.0 x4) 1 x M.2 (PCIe 5.0 x2)	Front hot-swap: 12 x 2.5" Gen5 NVMe/SATA/SAS4 *Storage card is required to support SATA/SAS Internal M.2: 1 x M.2 (PCIe 5.0 x4)
Expansion Slots	2 x PCIe 5.0 x16 FHHL 2 x OCP 3.0 Gen5 x16	2 x PCIe 5.0 x16 FHHL 2 x OCP 3.0 Gen5 x16	2 x PCIe 5.0 x16 FHHL 2 x OCP 3.0 Gen5 x16	1 x PCIe 5.0 x16 FHFL for GPU 1 x PCIe 5.0 x16 FHFL 1 x PCIe 5.0 x16 FHHL 1 x OCP 3.0 Gen5 x16
I/O Ports	Front: 2 x USB 3.2 Gen1 Rear: 2 x USB 3.2 Gen1 1 x Mini-DP 2 x RJ45 1 x MLAN	Front: 1 x USB 3.2 Gen1 Rear: 2 x USB 3.2 Gen1 1 x Mini-DP 2 x RJ45 1 x MLAN	Front: 1 x USB 3.2 Gen1 Rear: 2 x USB 3.2 Gen1 1 x Mini-DP 2 x RJ45 1 x MLAN	Front: 1 x USB 3.2 Gen1 Rear: 2 x USB 3.2 Gen1 1 x Mini-DP 1 x MLAN
Security	Optional TPM2.0 module: CTM012 Optional PRoT module: CSC1200	Optional TPM2.0 module: CTM012 Optional PRoT module: CSC1200	Optional TPM2.0 module: CTM012 Optional PRoT module: CSC1200	Optional TPM2.0 module: CTM012 Optional PRoT module: CSC1200
Power Supply	1+1 redundant power supply 1600W 80+ Titanium	Dual redundant power supply 1600W 80+ Titanium	Dual redundant power supply 1600W 80+ Titanium	Dual redundant power supply 2700W 80+ Titanium
System Management	ASPEED® AST2600 BMC GIGABYTE Management Console	ASPEED® AST2600 BMC GIGABYTE Management Console	ASPEED® AST2600 BMC GIGABYTE Management Console	ASPEED® AST2600 BMC GIGABYTE Management Console
Other Features	Dual ROM architecture	Dual ROM architecture	Dual ROM architecture	Dual ROM architecture Supports 1 x Dual slot Gen5 GPU

Rack Server



Model	R264-AG0-AAS1	R164-AG0-AAV1	R164-AG2-AAJ1
Motherboard	MAG4-GU0	MAG4-GU0	MAG4-GU0
Form Factor	2U (W438 x H87.5 x D815 mm)	1U (W438 x H43.5 x D815 mm)	1U (W438 x H43.5 x D815 mm)
CPU	Intel® Xeon® 6 Processors (Intel Xeon 6900-Series) Single processor, LGA 7529 TDP up to 500W	Intel® Xeon® 6 Processors (Intel Xeon 6900-Series) Single processor, LGA 7529 TDP up to 500W	Intel® Xeon® 6 Processors (Intel Xeon 6900-Series) Single processor, LGA 7529 TDP up to 500W
Chipset	System on Chip	System on Chip	System on Chip
Memory	12-Channel RDIMM/MRDIMM 12 x DDR5 DIMMs RDIMM: Up to 6400 MT/s MRDIMM: Up to 8800 MT/s ^[1]	12-Channel RDIMM/MRDIMM 12 x DDR5 DIMMs RDIMM: Up to 6400 MT/s MRDIMM: Up to 8800 MT/s ^[1]	12-Channel RDIMM/MRDIMM 12 x DDR5 DIMMs RDIMM: Up to 6400 MT/s MRDIMM: Up to 8800 MT/s ^[1]
LAN	1 x MLAN	1 x MLAN	1 x MLAN
Storage	Front hot-swap: 2 x 3.5"/2.5" Gen5 NVMe/SATA/SAS4 10 x 3.5"/2.5" SATA/SAS4 *SAS card is required to support SAS drives Internal M.2: 1 x M.2 (PCIe 5.0 x2) 1 x M.2 (PCIe 5.0 x2) - shared with SATA support	Front hot-swap: 4 x 3.5"/2.5" Gen5 NVMe/SATA/SAS4 *SAS card is required to support SAS drives Internal M.2: 1 x M.2 (PCIe 5.0 x2) 1 x M.2 (PCIe 5.0 x2) - shared with SATA support	Front hot-swap: 6 x 2.5" Gen5 NVMe/SATA/SAS4 6 x 2.5" SATA/SAS4 *SAS card is required to support SAS drives Internal M.2: 1 x M.2 (PCIe 5.0 x2) 1 x M.2 (PCIe 5.0 x2) - shared with SATA support
Expansion Slots	4 x PCIe 5.0 x16 FHFL for GPUs 1 x OCP 3.0 Gen5 x16	1 x PCIe 5.0 x16 FHFL for GPUs 1 x PCIe 5.0 x16 FHFL 1 x PCIe 5.0 x16 FHHL 1 x OCP 3.0 Gen5 x16	1 x PCIe 5.0 x16 FHFL for GPUs 1 x PCIe 5.0 x16 FHFL 1 x PCIe 5.0 x16 FHHL 1 x OCP 3.0 Gen5 x16
I/O Ports	Front: 2 x USB 3.2 Gen1 Rear: 2 x USB 3.2 Gen1 1 x Mini-DP 1 x MLAN	Front: 2 x USB 3.2 Gen1 Rear: 2 x USB 3.2 Gen1 1 x Mini-DP 1 x MLAN	Front: 1 x USB 3.2 Gen1 Rear: 2 x USB 3.2 Gen1 1 x Mini-DP 1 x MLAN
Security	Optional TPM2.0 module: CTM012 Optional PRoT module: CSC1200	Optional TPM2.0 module: CTM012 Optional PRoT module: CSC1200	Optional TPM2.0 module: CTM012 Optional PRoT module: CSC1200
Power Supply	Dual redundant power supply 3200W 80+ Titanium	Dual redundant power supply 1600W 80+ Titanium	Dual redundant power supply 2000W 80+ Titanium
System Management	ASPEED® AST2600 BMC GIGABYTE Management Console	ASPEED® AST2600 BMC GIGABYTE Management Console	ASPEED® AST2600 BMC GIGABYTE Management Console
Other Features	Dual ROM architecture Supports 4 x Dual slot Gen5 GPUs	Dual ROM architecture Supports 1 x Dual slot Gen5 GPU	Dual ROM architecture Supports 1 x Dual slot Gen5 GPU

Rack Server



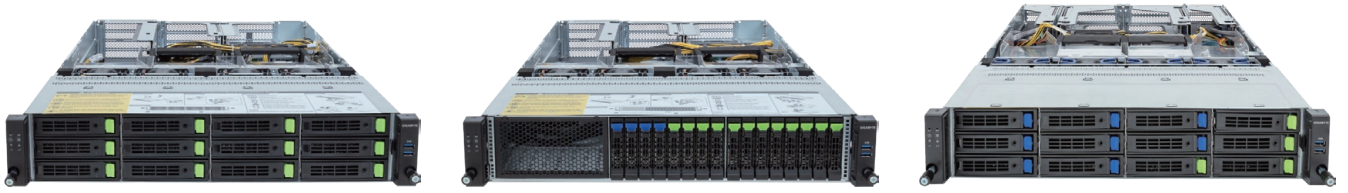
Model	R264-S30-AAV1	R264-S33-AAL1	R264-SG0-AAS1
Motherboard	MS34-DC0	MS34-DC0	MSG4-GU0
Form Factor	2U (W438 x H87.5 x D710 mm)	2U (W438 x H87.5 x D710 mm)	2U (W438 x H87.5 x D815 mm)
CPU	Intel® Xeon® 6 Processors (6700E-series, 6700P-series, 6500P-series) Single processor, LGA 4710 TDP up to 350W	Intel® Xeon® 6 Processors (6700E-series, 6700P-series, 6500P-series) Single processor, LGA 4710 TDP up to 350W	Intel® Xeon® 6 Processors (6700E-series, 6700P-series, 6500P-series) Single processor, LGA 4710 TDP up to 350W
Chipset	System on Chip	System on Chip	System on Chip
Memory	8-Channel RDIMM/MRDIMM 16 x DDR5 DIMMs RDIMM: Up to 6400MT/s (1DPC), 5200MT/s (2DPC) MRDIMM: Up to 8000 MT/s ^[1]	8-Channel RDIMM/MRDIMM 16 x DDR5 DIMMs RDIMM: Up to 6400MT/s (1DPC), 5200MT/s (2DPC) MRDIMM: Up to 8000 MT/s ^[1]	8-Channel RDIMM/MRDIMM 16 x DDR5 DIMMs RDIMM: Up to 6400MT/s (1DPC), 5200MT/s (2DPC) MRDIMM: Up to 8000 MT/s ^[1]
LAN	1 x 1Gb/s LAN 1 x MLAN	1 x 1Gb/s LAN 1 x MLAN	1 x MLAN
Storage	Front hot-swap: 12 x 3.5"/2.5" Gen5 NVMe/SATA/SAS4 *SAS card is required to support SAS drives Internal M.2: 1 x M.2 (PCIe 5.0 x2) 1 x M.2 (PCIe 5.0 x2) - shared with SATA support	Front hot-swap: 4 x 3.5"/2.5" Gen5 NVMe/SATA/SAS4 8 x 3.5"/2.5" SATA/SAS4 *SAS card is required to support SAS drives Internal M.2: 1 x M.2 (PCIe 5.0 x2) 1 x M.2 (PCIe 5.0 x2) - shared with SATA support	Front hot-swap: 12 x 3.5"/2.5" SATA/SAS4 *SAS card is required to support SAS drives Internal M.2: 1 x M.2 (PCIe 5.0 x2)
Expansion Slots	1 x PCIe 5.0 x16 FHHL 1 x OCP 3.0 Gen5 x16	3 x PCIe 5.0 x16 FHFL for GPUs 1 x OCP 3.0 Gen5 x16	4 x PCIe 5.0 x16 FHFL for GPUs 1 x OCP 3.0 Gen5 x16
I/O Ports	Front: 2 x USB 3.2 Gen1 Rear: 2 x USB 3.2 Gen1 1 x Mini-DP 1 x RJ45 1 x MLAN	Front: 2 x USB 3.2 Gen1 Rear: 2 x USB 3.2 Gen1 1 x Mini-DP 1 x RJ45 1 x MLAN	Front: 2 x USB 3.2 Gen1 Rear: 2 x USB 3.2 Gen1 1 x Mini-DP 1 x MLAN
Security	Optional TPM2.0 module: CTM012 Optional PRoT module: CSC1200	Optional TPM2.0 module: CTM012 Optional PRoT module: CSC1200	Optional TPM2.0 module: CTM012 Optional PRoT module: CSC1200
Power Supply	1+1 redundant power supply 1600W 80+ Titanium	1+1 redundant power supply 2700W 80+ Titanium	1+1 redundant power supply 3200W 80+ Titanium
System Management	ASPEED® AST2600 BMC GIGABYTE Management Console	ASPEED® AST2600 BMC GIGABYTE Management Console	ASPEED® AST2600 BMC GIGABYTE Management Console
Other Features	Dual ROM architecture	Dual ROM architecture Supports 3 x Dual slot Gen5 GPUs	Dual ROM architecture Supports 4 x Dual slot Gen5 GPUs

Rack Server



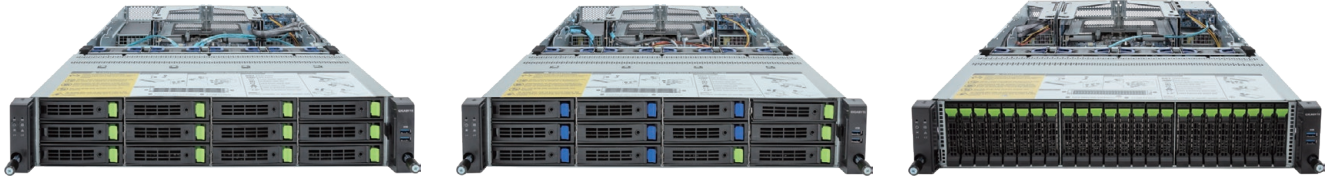
Model	R164-SG0-AAH1	R164-SG2-AAV1	R164-S30-AAG1	R164-S32-AAG1
Motherboard	MSG4-GU0	MSG4-GU0	MS34-DC0	MS34-DC0
Form Factor	1U (W438 x H43.5 x D815 mm)	1U (W438 x H43.5 x D815 mm)	1U (W438 x H43.5 x D710 mm)	1U (W438 x H43.5 x D710 mm)
CPU	Intel® Xeon® 6 Processors (6700E/6700P/6500P-series) Single processor, LGA 4710 TDP up to 350W	Intel® Xeon® 6 Processors (6700E/6700P/6500P-series) Single processor, LGA 4710 TDP up to 350W	Intel® Xeon® 6 Processors (6700E/6700P/6500P-series) Single processor, LGA 4710 TDP up to 350W	Intel® Xeon® 6 Processors (6700E/6700P/6500P-series) Single processor, LGA 4710 TDP up to 350W
Chipset	System on Chip	System on Chip	System on Chip	System on Chip
Memory	8-Channel RDIMM/MRDIMM 16 x DDR5 DIMMs RDIMM: 6400MT/s (1DPC), 5200MT/s (2DPC) MRDIMM: Up to 8000 MT/s ^[1]	8-Channel RDIMM/MRDIMM 16 x DDR5 DIMMs RDIMM: 6400MT/s (1DPC), 5200MT/s (2DPC) MRDIMM: Up to 8000 MT/s ^[1]	8-Channel RDIMM/MRDIMM 16 x DDR5 DIMMs RDIMM: 6400MT/s (1DPC), 5200MT/s (2DPC) MRDIMM: Up to 8000 MT/s ^[1]	8-Channel RDIMM/MRDIMM 16 x DDR5 DIMMs RDIMM: 6400MT/s (1DPC), 5200MT/s (2DPC) MRDIMM: Up to 8000 MT/s ^[1]
LAN	1 x MLAN	1 x MLAN	1 x 1Gb/s LAN 1 x MLAN	1 x 1Gb/s LAN 1 x MLAN
Storage	Front hot-swap: 4 x 3.5"/2.5" Gen5 NVMe/SATA/SAS4 *SAS card is required to support SAS Internal M.2: 1 x M.2 (PCIe 5.0 x2) 1 x M.2 (PCIe 5.0 x2) - shared with SATA	Front hot-swap: 4 x 2.5" Gen5 NVMe/SATA/SAS4 8 x 2.5" SATA/SAS4 *SAS card is required to support SAS Internal M.2: 1 x M.2 (PCIe 5.0 x2)	Front hot-swap: 4 x 3.5"/2.5" Gen5 NVMe/SATA/SAS4 *SAS card is required to support SAS Internal M.2: 1 x M.2 (PCIe 5.0 x2) 1 x M.2 (PCIe 5.0 x2) - shared with SATA	Front hot-swap: 12 x 2.5" Gen5 NVMe/SATA/SAS4 *SAS card is required to support SAS Internal M.2: 1 x M.2 (PCIe 5.0 x2) 1 x M.2 (PCIe 5.0 x2) - shared with SATA
Expansion Slots	1 x PCIe 5.0 x16 FHFL for GPUs 1 x PCIe 5.0 x16 FHFL 1 x PCIe 5.0 x16 FHHL 1 x OCP 3.0 Gen5 x16	1 x PCIe 5.0 x16 FHFL for GPUs 1 x PCIe 5.0 x16 FHFL 1 x PCIe 5.0 x16 FHHL 1 x OCP 3.0 Gen5 x16	2 x PCIe 5.0 x16 FHHL 2 x OCP 3.0 Gen5 x16	1 x PCIe 5.0 x16 FHHL 1 x OCP 3.0 Gen5 x16
I/O Ports	Front: 2 x USB 3.2 Gen1 Rear: 2 x USB 3.2 Gen1 1 x Mini-DP 1 x MLAN	Front: 1 x USB 3.2 Gen1 Rear: 2 x USB 3.2 Gen1 1 x Mini-DP 1 x MLAN	Front: 2 x USB 3.2 Gen1 Rear: 2 x USB 3.2 Gen1 1 x Mini-DP 1 x RJ45 1 x MLAN	Front: 1 x USB 3.2 Gen1 Rear: 2 x USB 3.2 Gen1 1 x Mini-DP 1 x RJ45 1 x MLAN
Security	Optional TPM2.0 module: CTM012 Optional PRoT module: CSC1200	Optional TPM2.0 module: CTM012 Optional PRoT module: CSC1200	Optional TPM2.0 module: CTM012 Optional PRoT module: CSC1200	Optional TPM2.0 module: CTM012 Optional PRoT module: CSC1200
Power Supply	Dual redundant power supply 1300W 80+ Titanium	Dual redundant power supply 1600W 80+ Titanium	Dual redundant power supply 800W 80+ Titanium	1+1 redundant power supply 1300W 80+ Titanium
System Management	ASPEED® AST2600 BMC GIGABYTE Management Console	ASPEED® AST2600 BMC GIGABYTE Management Console	ASPEED® AST2600 BMC GIGABYTE Management Console	ASPEED® AST2600 BMC GIGABYTE Management Console
Other Features	Dual ROM architecture Supports 1 x Dual slot Gen5 GPU	Dual ROM architecture Supports 1 x Dual slot Gen5 GPU	Dual ROM architecture	Dual ROM architecture

Rack Server



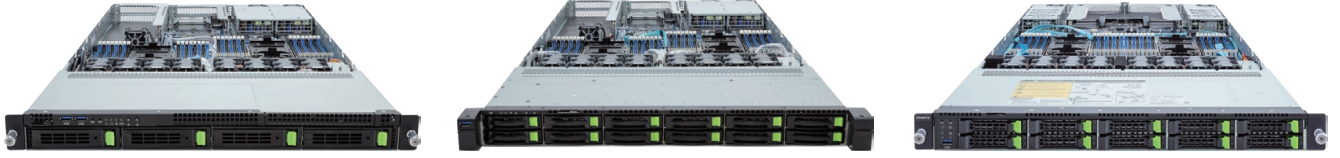
Model	R283-SF0-AAL1	R283-SF1-AAL1	R283-S93-AAF1 / AAL1
Motherboard	MSF3-GP0	MSF3-GP0	MS93-FS0
Form Factor	2U (W438 x H87.5 x D815 mm)	2U (W438 x H87.5 x D815 mm)	2U (W438 x H87.5 x D815 mm)
CPU	5th/4th Gen Intel® Xeon® Scalable Intel® Xeon® CPU Max Series Dual processors, LGA 4677 TDP up to 350W	5th/4th Gen Intel® Xeon® Scalable Intel® Xeon® CPU Max Series Dual processors, LGA 4677 TDP up to 350W	5th/4th Gen Intel® Xeon® Scalable Intel® Xeon® CPU Max Series Dual processors, LGA 4677 TDP 350W at ambient 25°C
Chipset	Intel® C741 Chipset	Intel® C741 Chipset	Intel® C741 Chipset
Memory	8-Channel DDR5 RDIMM, 32 x DIMMs Up to 5600 MT/s (1DPC), 4400 MT/s (2DPC) ^[2]	8-Channel DDR5 RDIMM, 32 x DIMMs Up to 5600 MT/s (1DPC), 4400 MT/s (2DPC) ^[2]	8-Channel DDR5 RDIMM, 32 x DIMMs Up to 5600 MT/s (1DPC), 4400 MT/s (2DPC) ^[2]
LAN	1 x MLAN	1 x MLAN	2 x 1Gb/s LAN 1 x MLAN
Storage	Front hot-swap: 12 x 3.5"/2.5" Gen5 NVMe/SATA/SAS4 *SAS card is required to support SAS drives	Front hot-swap: 12 x 2.5" Gen5 NVMe/SATA 4 x 2.5" SATA/SAS4 *SAS card is required to support SAS drives	Front hot-swap: 4 x 3.5"/2.5" Gen4 NVMe/SATA/SAS 8 x 3.5"/2.5" SATA/SAS *SAS card is required to support SAS drives
Expansion Slots	4 x PCIe 5.0 x16 FHFL for GPUs 1 x PCIe 5.0 x16 FHHL 1 x OCP 3.0 Gen5 x16	4 x PCIe 5.0 x16 FHFL for GPUs 1 x PCIe 5.0 x16 FHHL 1 x OCP 3.0 Gen5 x16	2 x PCIe 5.0 x16 FHFL for GPUs 2 x PCIe 5.0 x16 FHHL 4 x PCIe 5.0 x8 LP 2 x OCP 3.0 Gen5 x16
I/O Ports	Front: 2 x USB 3.2 Gen1 Rear: 2 x USB 3.2 Gen1 1 x Mini-DP 1 x MLAN	Front: 2 x USB 3.2 Gen1 Rear: 2 x USB 3.2 Gen1 1 x Mini-DP 1 x MLAN	Front: 2 x USB 3.2 Gen1 Rear: 2 x USB 3.2 Gen1 1 x Mini-DP 2 x RJ45 1 x MLAN
Security	Optional TPM 2.0 module: CTM010	Optional TPM 2.0 module: CTM010	Optional TPM 2.0 module: CTM010
Power Supply	Dual redundant power supply 2700W 80+ Titanium	Dual redundant power supply 2700W 80+ Titanium	Dual redundant power supply [AAF1] 2400W 80+ Platinum [AAL1] 2700W 80+ Titanium
System Management	ASPEED® AST2600 BMC GIGABYTE Management Console	ASPEED® AST2600 BMC GIGABYTE Management Console	ASPEED® AST2600 BMC GIGABYTE Management Console
Other Features	Dual ROM architecture Supports 4 x Dual slot Gen5 GPUs	Dual ROM architecture Supports 4 x Dual slot Gen5 GPUs	Dual ROM architecture Supports 2 x Dual slot Gen5 GPUs NVIDIA-Certified Systems™

Rack Server



Model	R283-S96-AAE1 / AAJ1	R283-S97-AAD1 / AAV1	R283-S98-AAE* / AAJ*
Motherboard	MS93-FS0	MS93-FS0	MS93-FS0
Form Factor	2U (W438 x H87.5 x D815 mm)	2U (W438 x H87.5 x D815 mm)	2U (W438 x H87.5 x D815 mm)
CPU	5th/4th Gen Intel® Xeon® Scalable Intel® Xeon® CPU Max Series Dual processors, LGA 4677 TDP up to 350W	5th/4th Gen Intel® Xeon® Scalable Intel® Xeon® CPU Max Series Dual processors, LGA 4677 TDP up to 350W	5th/4th Gen Intel® Xeon® Scalable Intel® Xeon® CPU Max Series Dual processors, LGA 4677 TDP up to 350W
Chipset	Intel C741 Chipset	Intel C741 Chipset	Intel C741 Chipset
Memory	8-Channel DDR5 RDIMM, 32 x DIMMs Up to 5600 MT/s (1DPC), 4400 MT/s (2DPC) ^[2]	8-Channel DDR5 RDIMM, 32 x DIMMs Up to 5600 MT/s (1DPC), 4400 MT/s (2DPC) ^[2]	8-Channel DDR5 RDIMM, 32 x DIMMs Up to 5600 MT/s (1DPC), 4400 MT/s (2DPC) ^[2]
LAN	2 x 1Gb/s LAN 1 x MLAN	2 x 1Gb/s LAN 1 x MLAN	2 x 1Gb/s LAN 1 x MLAN
Storage	Front hot-swap: 12 x 3.5"/2.5" Gen5 NVMe/SATA/SAS4 Rear hot-swap: 2 x 2.5" SATA/SAS4 *SAS card is required to support SAS drives	Front hot-swap: 4 x 3.5"/2.5" Gen5 NVMe/SATA/SAS4 8 x 3.5"/2.5" SATA/SAS4 Rear hot-swap: 2 x 2.5" SATA/SAS4 *Broadcom SAS4x32 expander SAS card is required to enable SATA/SAS4	Front hot-swap: [AAE1/AAJ1] 12 x 2.5" Gen5 NVMe/SATA 12 x 2.5" NVMe [AAE2/AAJ2] 8 x 2.5" Gen5 NVMe/SATA/SAS4* 16 x 2.5" SATA/SAS4* Rear hot-swap: 2 x 2.5" SATA/SAS4 *Broadcom SAS4x48 expander SAS card is required to enable SATA/SAS4
Expansion Slots	4 x PCIe 5.0 x16 FHHL 2 x OCP 3.0 Gen5 x16	4 x PCIe 5.0 x16 FHHL 2 x OCP 3.0 Gen5 x16	[AAE1/AAJ1] 2 x PCIe 5.0 x16 FHHL 1 x PCIe 5.0 x16 LP [AAE2/AAJ2] 4 x PCIe 5.0 x16 FHHL 2 x OCP 3.0 Gen5 x16
I/O Ports	Front: 2 x USB 3.2 Gen1 Rear: 2 x USB 3.2 Gen1 1 x Mini-DP 2 x RJ45 1 x MLAN	Front: 2 x USB 3.2 Gen1 Rear: 2 x USB 3.2 Gen1 1 x Mini-DP 2 x RJ45 1 x MLAN	Front: 2 x USB 3.2 Gen1 Rear: 2 x USB 3.2 Gen1 1 x Mini-DP 2 x RJ45 1 x MLAN
Security	Optional TPM 2.0 module	Optional TPM 2.0 module	Optional TPM 2.0 module
Power Supply	1+1 redundant power supply [AAE1] 2000W 80+ Platinum [AAJ1] 2000W 80+ Titanium	Dual redundant power supply [AAD1] 1600W 80+ Platinum [AAV1] 1600W 80+ Titanium	1+1 redundant power supply [AAE*] 2000W 80+ Platinum [AAJ*] 2000W 80+ Titanium
System Management	ASPEED® AST2600 BMC GIGABYTE Management Console	ASPEED® AST2600 BMC GIGABYTE Management Console	ASPEED® AST2600 BMC GIGABYTE Management Console
Other Features	Dual ROM architecture	Dual ROM architecture Onboard 24Gb/s SAS expander	Dual ROM architecture [AAE2/AAJ2] Onboard 24Gb/s SAS expander

Rack Server



Model	R183-SF0-AAJ1	R183-SF1-AAJ1	R183-S94-AAC* / AAH*
Motherboard	MSF3-GP0	MSF3-GP0	MS93-FS1
Form Factor	1U (W438 x H43.5 x D815 mm)	1U (W438 x H43.5 x D815 mm)	1U (W438 x H43.5 x D815 mm)
CPU	5th/4th Gen Intel® Xeon® Scalable Intel® Xeon® CPU Max Series Dual processors, LGA 4677 TDP up to 350W	5th/4th Gen Intel® Xeon® Scalable Intel® Xeon® CPU Max Series Dual processors, LGA 4677 TDP up to 350W	5th/4th Gen Intel® Xeon® Scalable Intel® Xeon® CPU Max Series Dual processors, LGA 4677 TDP up to 350W
Chipset	Intel® C741 Chipset	Intel® C741 Chipset	Intel® C741 Chipset
Memory	8-Channel DDR5 RDIMM, 32 x DIMMs Up to 5600 MT/s (1DPC), 4400 MT/s (2DPC) ^[2]	8-Channel DDR5 RDIMM, 32 x DIMMs Up to 5600 MT/s (1DPC), 4400 MT/s (2DPC) ^[2]	8-Channel DDR5 RDIMM, 32 x DIMMs Up to 5600 MT/s (1DPC), 4400 MT/s (2DPC) ^[2]
LAN	1 x MLAN	1 x MLAN	2 x 1Gb/s LAN 1 x MLAN
Storage	Front hot-swap: 4 x 3.5"/2.5" Gen5 NVMe/SATA/SAS4 *SAS card is required to support SAS drives	Front hot-swap: 12 x 2.5" Gen5 NVMe/SATA/SAS4 *SAS card is required to support SAS drives	Front hot-swap: [AAC1/AAH1] 10 x 2.5" Gen4 NVMe/SATA/SAS [AAC2/AAH2] 10 x SATA/SAS *SAS card is required to support SAS drives
Expansion Slots	1 x PCIe 5.0 x16 FHFL for GPU 1 x PCIe 5.0 x16 FHFL 1 x PCIe 5.0 x16 FHHL 1 x OCP 3.0 Gen5 x16	1 x PCIe 5.0 x16 FHFL for GPU 1 x PCIe 5.0 x16 FHFL 1 x PCIe 5.0 x16 FHHL 1 x OCP 3.0 Gen5 x16	2 x PCIe 5.0 x16 FHHL 2 x OCP 3.0 Gen5 x16
I/O Ports	Front: 2 x USB 3.2 Gen1 Rear: 2 x USB 3.2 Gen1 1 x Mini-DP 1 x MLAN	Front: 1 x USB 3.2 Gen1 Rear: 2 x USB 3.2 Gen1 1 x Mini-DP 1 x MLAN	Front: 1 x USB 3.2 Gen1 Rear: 2 x USB 3.2 Gen1 1 x Mini-DP 2 x RJ45 1 x MLAN
Security	Optional TPM 2.0 module: CTM010	Optional TPM 2.0 module: CTM010	Optional TPM 2.0 module: CTM010
Power Supply	1+1 redundant power supply 2000W 80+ Titanium	1+1 redundant power supply 2000W 80+ Titanium	Dual redundant power supply [AAC*] 1300W 80+ Platinum [AAH*] 1300W 80+ Titanium
System Management	ASPEED® AST2600 BMC GIGABYTE Management Console	ASPEED® AST2600 BMC GIGABYTE Management Console	ASPEED® AST2600 BMC GIGABYTE Management Console
Other Features	Dual ROM architecture Supports 1 x Dual slot Gen5 GPU	Dual ROM architecture Supports 1 x Dual slot Gen5 GPU	Dual ROM architecture

Rack Server



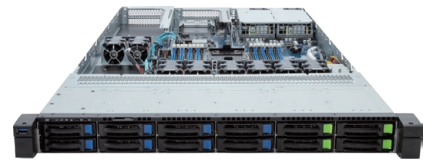
Model	R183-S95-AAD1 / AAV1	R183-S96-AAD1 / AAV1	R183-S97-AAD1 / AAV1
Motherboard	MS93-F50	MS93-F50	MS93-F50
Form Factor	1U (W438 x H43.5 x D815 mm)	1U (W438 x H43.5 x D815 mm)	1U (W438 x H43.5 x D815 mm)
CPU	5th/4th Gen Intel® Xeon® Scalable Intel® Xeon® CPU Max Series Dual processors, LGA 4677 TDP up to 350W	5th/4th Gen Intel® Xeon® Scalable Intel® Xeon® CPU Max Series Dual processors, LGA 4677 TDP up to 350W	5th/4th Gen Intel® Xeon® Scalable Intel® Xeon® CPU Max Series Dual processors, LGA 4677 TDP up to 350W
Chipset	Intel® C741 Chipset	Intel® C741 Chipset	Intel® C741 Chipset
Memory	8-Channel DDR5 RDIMM, 32 x DIMMs Up to 5600 MT/s (1DPC), 4400 MT/s (2DPC) ^[2]	8-Channel DDR5 RDIMM, 32 x DIMMs Up to 5600 MT/s (1DPC), 4400 MT/s (2DPC) ^[2]	8-Channel DDR5 RDIMM, 32 x DIMMs Up to 5600 MT/s (1DPC), 4400 MT/s (2DPC) ^[2]
LAN	2 x 1Gb/s LAN 1 x MLAN	2 x 1Gb/s LAN 1 x MLAN	2 x 1Gb/s LAN 1 x MLAN
Storage	Front hot-swap: 4 x 3.5"/2.5" Gen5 NVMe/SATA/SAS4 *SAS card is required to support SAS drives	Front hot-swap: 12 x 2.5" Gen5 NVMe/SATA/SAS4 *SAS card is required to support SAS drives	Front hot-swap: 6 x 9.5mm E1.S NVMe 8 x 2.5" Gen5 NVMe/SATA/SAS4 *SAS card is required to support SAS drives
Expansion Slots	2 x PCIe 5.0 x16 FHHL 2 x OCP 3.0 Gen5 x16	2 x PCIe 5.0 x16 FHHL 2 x OCP 3.0 Gen5 x16	2 x PCIe 5.0 x16 FHHL 2 x OCP 3.0 Gen5 x16
I/O Ports	Front: 2 x USB 3.2 Gen1 Rear: 2 x USB 3.2 Gen1 1 x Mini-DP 2 x RJ45 1 x MLAN	Front: 1 x USB 3.2 Gen1 Rear: 2 x USB 3.2 Gen1 1 x Mini-DP 2 x RJ45 1 x MLAN	Front: 1 x USB 3.2 Gen1 Rear: 2 x USB 3.2 Gen1 1 x Mini-DP 2 x RJ45 1 x MLAN
Security	Optional TPM 2.0 module: CTM010	Optional TPM 2.0 module: CTM010	Optional TPM 2.0 module: CTM010
Power Supply	1+1 redundant power supply [AAD1] 1600W 80+ Platinum [AAV1] 1600W 80+ Titanium	1+1 redundant power supply [AAD1] 1600W 80+ Platinum [AAV1] 1600W 80+ Titanium	1+1 redundant power supply [AAD1] 1600W 80+ Platinum [AAV1] 1600W 80+ Titanium
System Management	ASPEED® AST2600 BMC GIGABYTE Management Console	ASPEED® AST2600 BMC GIGABYTE Management Console	ASPEED® AST2600 BMC GIGABYTE Management Console
Other Features	Dual ROM architecture	Dual ROM architecture	Dual ROM architecture

Rack Server



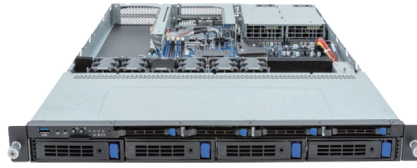
Model	R263-SG0-AAE1 / AAL1	R263-S33-AAF1 / AAL1	R263-S34-AAC1 / AAH1
Motherboard	MSG3-GU0	MS33-DC0	MS33-DC0
Form Factor	2U (W438 x H87.5 x D815 mm)	2U (W438 x H87.5 x D710 mm)	2U (W438 x H87.5 x D710 mm)
CPU	5th/4th Gen Intel® Xeon® Scalable Intel® Xeon® CPU Max Series Single processor, LGA4677 TDP up to 350W	5th/4th Gen Intel® Xeon® Scalable Intel® Xeon® CPU Max Series Single processor, LGA4677 TDP up to 350W	5th/4th Gen Intel® Xeon® Scalable Intel® Xeon® CPU Max Series Single processor, LGA4677 TDP up to 350W
Chipset	Intel® C741 Chipset	Intel® C741 Chipset	Intel® C741 Chipset
Memory	8-Channel DDR5 RDIMM, 16 x DIMMs Up to 5600 MT/s (1DPC), 4400 MT/s (2DPC) ^[2]	8-Channel DDR5 RDIMM, 16 x DIMMs Up to 5600 MT/s (1DPC), 4400 MT/s (2DPC) ^[2]	8-Channel DDR5 RDIMM, 16 x DIMMs Up to 5600 MT/s (1DPC), 4400 MT/s (2DPC) ^[2]
LAN	1 x MLAN	1 x 1Gb/s LAN 1 x MLAN	1 x 1Gb/s LAN 1 x MLAN
Storage	Front hot-swap: 12 x 3.5"/2.5" SATA/SAS4 *SAS card is required to support SAS drives Internal M.2: 1 x M.2 (PCIe 3.0 x4)	Front hot-swap: 12 x 3.5"/2.5" SATA/SAS4 *SAS card is required to support SAS drives Internal M.2: 1 x M.2 (PCIe 3.0 x4)	Front hot-swap: 4 x 3.5"/2.5" Gen5 NVMe/SATA/SAS4 8 x 3.5"/2.5" SATA/SAS4 *SAS card is required to support SAS drives Internal M.2: 1 x M.2 (PCIe 3.0 x4)
Expansion Slots	4 x PCIe 5.0 x16 FHFL for GPU 1 x OCP 3.0 Gen5 x16	3 x PCIe 5.0 x16 FHFL for GPU 2 x OCP 3.0 Gen5 x16	2 x PCIe 5.0 x16 FHHL 2 x OCP 3.0 Gen5 x16
I/O Ports	Front: 2 x USB 3.2 Gen1 Rear: 2 x USB 3.2 Gen1 1 x Mini-DP 1 x MLAN	Front: 2 x USB 3.2 Gen1 Rear: 2 x USB 3.2 Gen1 1 x Mini-DP 1 x RJ45 1 x MLAN	Front: 2 x USB 3.2 Gen1 Rear: 2 x USB 3.2 Gen1 1 x Mini-DP 1 x RJ45 1 x MLAN
Security	Optional TPM 2.0 module: CTM010	Optional TPM 2.0 module: CTM010	Optional TPM 2.0 module: CTM010
Power Supply	Dual redundant power supply [AAE1] 2000W 80+ Platinum [AAL1] 2700W 80+ Titanium	1+1 redundant power supply [AAF1] 2400W 80+ Platinum [AAL1] 2700W 80+ Titanium	1+1 redundant power supply [AAC1] 1300W 80+ Platinum [AAH1] 1300W 80+ Titanium
System Management	ASPEED® AST2600 BMC GIGABYTE Management Console	ASPEED® AST2600 BMC GIGABYTE Management Console	ASPEED® AST2600 BMC GIGABYTE Management Console
Other Features	Dual ROM architecture Supports 4 x Dual slot Gen5 GPUs	Dual ROM architecture Supports 3 x Dual slot Gen5 GPUs	Dual ROM architecture

Rack Server



Model	R163-S35-AAC1 / AAH1	R163-SG0-AAC1	R163-SG2-AAC1
Motherboard	MS33-DC0	MSG3-GU0	MSG3-GU0
Form Factor	1U (W438 x H43.5 x D710 mm)	1U (W438 x H43.5 x D815 mm)	1U (W438 x H43.5 x D815 mm)
CPU	5th/4th Gen Intel® Xeon® Scalable Intel® Xeon® CPU Max Series Single processor, LGA4677 TDP up to 350W	5th/4th Gen Intel® Xeon® Scalable Intel® Xeon® CPU Max Series Single processor, LGA4677 TDP up to 350W	5th/4th Gen Intel® Xeon® Scalable Intel® Xeon® CPU Max Series Single processor, LGA4677 TDP up to 350W
Chipset	Intel® C741 Chipset	Intel® C741 Chipset	Intel® C741 Chipset
Memory	8-Channel DDR5 RDIMM, 16 x DIMMs Up to 5600 MT/s (1DPC), 4400 MT/s (2DPC) ^[2]	8-Channel DDR5 RDIMM, 16 x DIMMs Up to 5600 MT/s (1DPC), 4400 MT/s (2DPC) ^[2]	8-Channel DDR5 RDIMM, 16 x DIMMs Up to 5600 MT/s (1DPC), 4400 MT/s (2DPC) ^[2]
LAN	1 x 1Gb/s LAN 1 x MLAN	1 x MLAN	1 x MLAN
Storage	Front hot-swap: 12 x 2.5" Gen5 NVMe/SATA/SAS4 *SAS card is required to support SAS drives Internal M.2: 1 x M.2 (PCIe 3.0 x4)	Front hot-swap: 4 x 3.5"/2.5" Gen5 NVMe/SATA/SAS4 *SAS card is required to support SAS drives Internal M.2: 1 x M.2 (PCIe 3.0 x4)	Front hot-swap: 4 x 2.5" Gen5 NVMe/SATA/SAS4 8 x 2.5" SATA/SAS4 *SAS card is required to support SAS drives Internal M.2: 1 x M.2 (PCIe 3.0 x4)
Expansion Slots	1 x PCIe 5.0 x16 FHHL 1 x OCP 3.0 Gen5 x16	1 x PCIe 5.0 x16 FHFL for GPU 1 x PCIe 5.0 x16 FHFL 1 x PCIe 5.0 x16 FHHL 1 x OCP 3.0 Gen5 x16	1 x PCIe 5.0 x16 FHFL for GPU 1 x PCIe 5.0 x16 FHFL 1 x PCIe 5.0 x16 FHHL 1 x OCP 3.0 Gen5 x16
I/O Ports	Front: 1 x USB 3.2 Gen1 Rear: 2 x USB 3.2 Gen1 1 x Mini-DP 1 x RJ45 1 x MLAN	Front: 2 x USB 3.2 Gen1 Rear: 2 x USB 3.2 Gen1 1 x Mini-DP 1 x MLAN	Front: 1 x USB 3.2 Gen1 Rear: 2 x USB 3.2 Gen1 1 x Mini-DP 1 x MLAN
Security	Optional TPM 2.0 module: CTM010	Optional TPM 2.0 module: CTM010	Optional TPM 2.0 module: CTM010
Power Supply	1+1 redundant power supply [AAC1] 1300W 80+ Platinum [AAH1] 1300W 80+ Titanium	1+1 redundant power supply 1300W 80+ Platinum	1+1 redundant power supply 1300W 80+ Platinum
System Management	ASPEED® AST2600 BMC GIGABYTE Management Console	ASPEED® AST2600 BMC GIGABYTE Management Console	ASPEED® AST2600 BMC GIGABYTE Management Console
Other Features	Dual ROM architecture	Dual ROM architecture Supports 1 x Dual slot Gen5 GPU	Dual ROM architecture Supports 1 x Dual slot Gen5 GPU

Rack Server



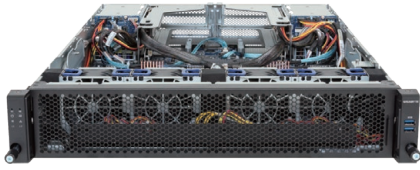
Model	R133-X10-AAA2 / AAG2	R133-X11-AAB1 / AAG1	R133-X13-AAB1 / AAG1
Motherboard	MX14-BL1	MX14-BL0	MX14-BL1
Form Factor	1U (W438 x H43.5x D710 mm)	1U (W438 x H43.5x D710 mm)	1U (W438 x H43.5x D710 mm)
CPU	Intel® Xeon® E-2400 Intel® Pentium® Gold G7400 / G7400T Single processor, LGA1700 TDP up to 95W	Intel® Xeon® E-2400 Intel® Pentium® Gold G7400 / G7400T Single processor, LGA1700 TDP up to 95W	Intel® Xeon® E-2400 Intel® Pentium® Gold G7400 / G7400T Single processor, LGA1700 TDP up to 95W
Chipset	Intel® C262 Chipset	Intel® C262 Chipset	Intel® C262 Chipset
Memory	2-Channel DDR5 ECC UDIMM, 4 x DIMMs Up to 4400MT/s (1DPC), 4000MT/s (2DPC/1R), 3600MT/s (2DPC/2R)	2-Channel DDR5 ECC UDIMM, 4 x DIMMs Up to 4400MT/s (1DPC), 4000MT/s (2DPC/1R), 3600MT/s (2DPC/2R)	2-Channel DDR5 ECC UDIMM, 4 x DIMMs Up to 4400MT/s (1DPC), 4000MT/s (2DPC/1R), 3600MT/s (2DPC/2R)
LAN	2 x 1Gb/s LAN 1 x MLAN	2 x 1Gb/s LAN 2 x 10Gb/s LAN 1 x MLAN	2 x 1Gb/s LAN 1 x MLAN
Storage	Front hot-swap: 2 x 3.5"/2.5" Gen4 NVMe/SATA 2 x 3.5"/2.5" SATA Internal M.2: 1 x M.2 (PCIe 4.0 x4)	Front hot-swap: 4 x 3.5"/2.5" SATA 4 x 2.5" 7mm SATA Internal M.2: 1 x M.2 (PCIe 4.0 x4)	Front hot-swap: 4 x 3.5"/2.5" SATA Internal M.2: 1 x M.2 (PCIe 4.0 x4)
Expansion Slots	1 x PCIe 4.0 x4 FHHL	1 x PCIe 5.0 x16 or 2 x PCIe 5.0 x8 FHFL 1 x PCIe 4.0 x4 FHHL	1 x PCIe 5.0 x16 or 2 x PCIe 5.0 x8 FHFL 1 x PCIe 4.0 x4 FHHL
I/O Ports	Front: 2 x USB 3.2 Gen1 Rear: 2 x USB 3.2 Gen1 1 x Mini-DP 2 x RJ45 1 x MLAN	Front: 1 x USB 3.2 Gen1 Rear: 2 x USB 3.2 Gen1 1 x Mini-DP 4 x RJ45 1 x MLAN	Front: 2 x USB 3.2 Gen1 Rear: 2 x USB 3.2 Gen1 1 x Mini-DP 2 x RJ45 1 x MLAN
Security	Optional TPM 2.0 module: CTM010	Optional TPM 2.0 module: CTM010	Optional TPM 2.0 module: CTM010
Power Supply	1+1 redundant power supply [AAA2] 550W 80+ Platinum [AAG2] 800W 80+ Titanium	1+1 redundant power supply [AAB1] 800W 80+ Platinum [AAG1] 800W 80+ Titanium	1+1 redundant power supply [AAB1] 800W 80+ Platinum [AAG1] 800W 80+ Titanium
System Management	ASPEED® AST2600 BMC GIGABYTE Management Console	ASPEED® AST2600 BMC GIGABYTE Management Console	ASPEED® AST2600 BMC GIGABYTE Management Console
Other Features	N/A	Supports 1 x Dual slot Gen5 GPU	Supports 1 x Dual slot Gen5 GPU

Rack Server

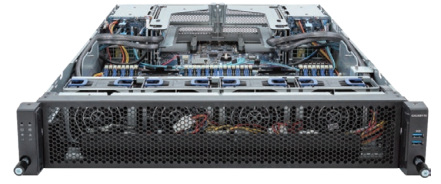
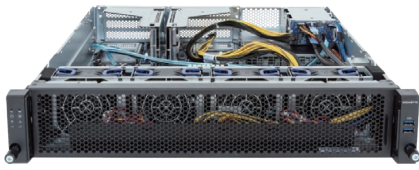


Model	R123-X00-AA01	R113-X30-AA02	R112-X30
Motherboard	MX04-CEO	MX34-BS0	MX33-BS0
Form Factor	1U (W438 x H43.5x D536 mm)	1U (W430 x H43.5 x D393.2 mm)	1U (W430 x H43.5 x D393.2 mm)
CPU	Intel® Xeon® E-2400 Intel® Pentium® Gold G7400 / G7400T Single processor, LGA1700 TDP up to 95W	Intel® Xeon® E-2400 Intel® Pentium® Gold G7400 / G7400T Single processor, LGA1700 TDP up to 95W	Intel® Xeon® E-2300 10th Gen Intel® Pentium® Single processor, LGA1200 CPU TDP up to 95W
Chipset	Intel® C262 Chipset	Intel® C262 Chipset	Intel® C252 Chipset
Memory	2-Channel DDR5 ECC UDIMM, 4 x DIMMs Up to 4400MT/s (1DPC), 4000MT/s (2DPC/1R), 3600MT/s (2DPC/2R)	2-Channel DDR5 ECC UDIMM, 4 x DIMMs Up to 4400MT/s (1DPC), 4000MT/s (2DPC/1R), 3600MT/s (2DPC/2R)	2-Channel ECC/Non-ECC UDIMM 4 x DDR4 DIMMs Up to 3200 MT/s (1DPC), 2933 MT/s (2DPC)
LAN	2 x 1Gb/s LAN 1 x MLAN	2 x 1Gb/s LAN 1 x MLAN	2 x 1Gb/s LAN 1 x MLAN
Storage	Front hot-swap: 4 x 3.5"/2.5" SATA Internal M.2: 1 x M.2 (PCIe 4.0 x4)	Front hot-swap: 2 x 2.5" SATA Internal: 2 x 2.5" SATA 1 x M.2 (PCIe 4.0 x4)	Front hot-swap: 2 x 2.5" SATA Internal: 2 x 2.5" SATA 1 x M.2 (PCIe 3.0 x4)
Expansion Slots	1 x PCIe 5.0 x16 FHHL 2 x PCIe 4.0 x4 LP	1 x PCIe 5.0 x16 FHHL	1 x PCIe 4.0 x16 FHHL
I/O Ports	Front: 2 x USB 3.2 Gen1 Rear: 2 x USB 3.2 Gen1 1 x COM 1 x VGA 2 x RJ45 1 x MLAN	Front: 2 x USB 3.2 Gen1 Rear: 2 x USB 3.2 Gen1 1 x COM 1 x VGA 2 x RJ45 1 x MLAN	Front: 2 x USB 3.2 Gen1 Rear: 2 x USB 3.2 Gen1 4 x USB 2.0 1 x COM 1 x VGA 2 x RJ45 1 x MLAN
Security	Optional TPM 2.0 module: CTM010	Optional TPM 2.0 module: CTM010	Optional TPM 2.0 module: CTM010
Power Supply	Single power supply 400W 80+ Gold	Single power supply 400W 80+ Gold	Single power supply 350W 80+ Bronze
System Management	ASPEED® AST2600 BMC GIGABYTE Management Console	ASPEED® AST2600 BMC GIGABYTE Management Console	ASPEED® AST2500 BMC GIGABYTE Management Console
Other Features	N/A	N/A	N/A

Edge Server

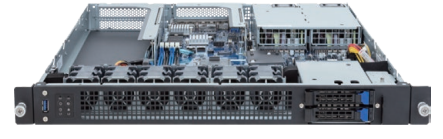
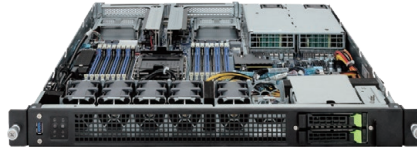
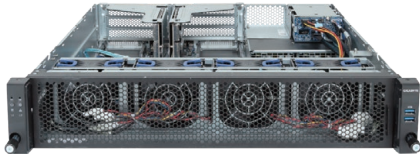


Model	E284-A90-AAJ1	E284-S90-AAJ1	E264-AG0-AAS1
Motherboard	MA94-FS0	MS94-FS0	MAG4-GU0
Form Factor	2U (W438 x H87.5 x D815 mm)	2U (W438 x H87.5 x D815 mm)	2U (W438 x H87.5 x D620 mm)
CPU	Intel® Xeon® 6 Processors (Intel Xeon 6900-Series) Dual processors, LGA 7529 TDP up to 500W	Intel® Xeon® 6 Processors (6700E-series, 6700P-series, 6500P-series) Dual processors, LGA 4710 TDP up to 350W	Intel® Xeon® 6 Processors (Intel Xeon 6900-Series) Single processors, LGA 7529 TDP up to 500W
Chipset	System on Chip	System on Chip	System on Chip
Memory	12-Channel RDIMM/MRDIMM 24 x DDR5 DIMMs RDIMM: Up to 6400 MT/s MRDIMM: Up to 8800 MT/s ^[1]	8-Channel RDIMM/MRDIMM 32 x DDR5 DIMMs RDIMM: Up to 6400MT/s (1DPC), 5200MT/s (2DPC) MRDIMM: Up to 8000 MT/s ^[1]	12-Channel RDIMM/MRDIMM 12 x DDR5 DIMMs RDIMM: Up to 6400 MT/s MRDIMM: Up to 8800 MT/s ^[1]
LAN	2 x 1Gb/s LAN 1 x MLAN	2 x 1Gb/s LAN 1 x MLAN	1 x MLAN
Storage	Rear hot-swap: 4 x 2.5" Gen5 NVMe/SATA/SAS4 *SAS card is required to support SAS drives Internal M.2: 2 x M.2 (PCIe 5.0 x4)	Rear hot-swap: 4 x 2.5" Gen5 NVMe/SATA/SAS4 *SAS card is required to support SAS drives Internal M.2: 2 x M.2 (PCIe 5.0 x4)	Front hot-swap: (Only support SSDs) 2 x 2.5" Gen5 NVMe/SATA/SAS4 2 x 2.5" SATA/SAS4 *SAS card is required to support SAS drives Internal M.2: 1 x M.2 (PCIe 5.0 x2) 1 x M.2 (PCIe 5.0 x2) - shared with SATA
Expansion Slots	6 x PCIe 5.0 x16 FHHL 2 x OCP 3.0 Gen5 x16	6 x PCIe 5.0 x16 FHHL 2 x OCP 3.0 Gen5 x16	4 x PCIe 5.0 x16 FHFL for GPUs 1 x OCP 3.0 Gen5 x16
I/O Ports	Front: 2 x USB 3.2 Gen1 Rear: 2 x USB 3.2 Gen1 1 x Mini-DP 2 x RJ45 1 x MLAN	Front: 2 x USB 3.2 Gen1 Rear: 2 x USB 3.2 Gen1 1 x Mini-DP 2 x RJ45 1 x MLAN	Front: 2 x USB 3.2 Gen1 Rear: 2 x USB 3.2 Gen1 1 x Mini-DP 2 x RJ45 1 x MLAN
Security	Optional TPM2.0 module: CTM012 Optional PRoT module: CSC1200	Optional TPM2.0 module: CTM012 Optional PRoT module: CSC1200	Optional TPM2.0 module: CTM012 Optional PRoT module: CSC1200
Power Supply	Dual redundant power supply 2000W 80+ Titanium	1+1 redundant power supply 2000W 80+ Titanium	Dual redundant power supply 3200W 80+ Titanium
System Management	ASPEED® AST2600 BMC GIGABYTE Management Console	ASPEED® AST2600 BMC GIGABYTE Management Console	ASPEED® AST2600 BMC GIGABYTE Management Console
Other Features	Dual ROM architecture	Dual ROM architecture	Dual ROM architecture Supports 4 x Dual slot Gen5 GPUs



Model	E264-S30-AAJ1	E164-S30-AAG1	E283-S90-AAD1 / AAV1
Motherboard	MS34-DC0	MS34-DC0	MS93-FS0
Form Factor	2U (W438 x H87.5 x D520 mm)	1U (W438 x H43.5 x D520 mm)	2U (W438 x H87.5 x D625 mm)
CPU	Intel® Xeon® 6 Processors (6700E-series, 6700P-series, 6500P-series) Single processor, LGA 4710 TDP up to 350W	Intel® Xeon® 6 Processors (6700E-series, 6700P-series, 6500P-series) Single processor, LGA 4710 TDP up to 350W	5th/4th Gen Intel® Xeon® Scalable Intel® Xeon® CPU Max Series Dual processors, LGA4677 TDP up to 350W
Chipset	System on Chip	System on Chip	Intel® C741 Chipset
Memory	8-Channel RDIMM/MRDIMM 16 x DDR5 DIMMs RDIMM: Up to 6400MT/s (1DPC), 5200MT/s (2DPC) MRDIMM: Up to 8000 MT/s ^[1]	8-Channel RDIMM/MRDIMM 16 x DDR5 DIMMs RDIMM: Up to 6400MT/s (1DPC), 5200MT/s (2DPC) MRDIMM: Up to 8000 MT/s ^[1]	8-Channel RDIMM 32 x DDR5 DIMMs Up to 5600 MT/s (1DPC), 4400 MT/s (2DPC) ^[2]
LAN	1 x 1Gb/s LAN 1 x MLAN	1 x 1Gb/s LAN 1 x MLAN	2 x 1Gb/s LAN 1 x MLAN
Storage	Rear hot-swap: 2 x 2.5" Gen5 NVMe/SATA/SAS4 *SAS card is required to support SAS drives Internal M.2: 1 x M.2 (PCIe 5.0 x2) 1 x M.2 (PCIe 5.0 x2) - shared with SATA	Front hot-swap: 2 x 2.5" Gen5 NVMe/SATA/SAS4 *SAS card is required to support SAS drives Internal M.2: 1 x M.2 (PCIe 5.0 x2) 1 x M.2 (PCIe 5.0 x2) - shared with SATA	Rear hot-swap: 4 x 2.5" Gen4 NVMe/SATA *SAS card is required to support SAS drives
Expansion Slots	2 x PCIe 5.0 x16 FHFL for GPUs 2 x OCP 3.0 Gen5 x16	2 x PCIe 5.0 x16 FHFL 2 x OCP 3.0 Gen5 x16	6 x PCIe 5.0 x16 FHFL 2 x OCP 3.0 Gen5 x16
I/O Ports	Front: 2 x USB 3.2 Gen1 Rear: 2 x USB 3.2 Gen1 1 x Mini-DP 2 x RJ45 1 x MLAN	Front: 1 x USB 3.2 Gen1 Rear: 2 x USB 3.2 Gen1 1 x Mini-DP 2 x RJ45 1 x MLAN	Front: 2 x USB 3.2 Gen1 Rear: 2 x USB 3.2 Gen1 1 x Mini-DP 2 x RJ45 1 x MLAN
Security	Optional TPM2.0 module: CTM012 Optional PRoT module: CSC1200	Optional TPM2.0 module: CTM012 Optional PRoT module: CSC1200	Optional TPM 2.0 module: CTM010
Power Supply	1+1 redundant power supply 2000W 80+ Titanium	Dual redundant power supply 800W 80+ Titanium	Dual redundant power supply [AAD1] 1600W 80+ Platinum [AAV1] 1600W 80+ Titanium
System Management	ASPEED® AST2600 BMC GIGABYTE Management Console	ASPEED® AST2600 BMC GIGABYTE Management Console	ASPEED® AST2600 BMC GIGABYTE Management Console
Other Features	Dual ROM architecture Supports 2 x Dual slot Gen5 GPUs	Dual ROM architecture	Dual ROM architecture

Edge Server



Model	E263-S30-AAD1 / AAV1	E163-S30-AAB1 / AAG1	E133-X10-AAA1 / AAG1
Motherboard	MS33-DC0	MS33-DC0	MX14-BL1
Form Factor	2U (W438 x H87.5 x D520 mm)	1U (W438 x H43.5 x D520 mm)	1U (W438 x H43.5x D520 mm)
CPU	5th/4th Gen Intel® Xeon® Scalable Intel® Xeon® CPU Max Series Single processor, LGA4677 TDP up to 350W	5th/4th Gen Intel® Xeon® Scalable Intel® Xeon® CPU Max Series Single processor, LGA4677 TDP up to 350W	Intel® Xeon® E-2400 Intel® Pentium® Gold G7400 / G7400T Single processor, LGA 1700 TDP up to 95W
Chipset	Intel® C741 Chipset	Intel® C741 Chipset	Intel® C262 Chipset
Memory	8-Channel RDIMM 16 x DDR5 DIMMs Up to 5600 MT/s (1DPC), 4400 MT/s (2DPC) ^[2]	8-Channel RDIMM 16 x DDR5 DIMMs Up to 5600 MT/s (1DPC), 4400 MT/s (2DPC) ^[2]	2-Channel ECC UDIMM 4 x DDR5 DIMMs Up to 4400MT/s (1DPC), 4000MT/s (2DPC/1R), 3600MT/s (2DPC/2R)
LAN	1 x 1Gb/s LAN 1 x MLAN	1 x 1Gb/s LAN 1 x MLAN	2 x 1Gb/s LAN 1 x MLAN
Storage	Rear hot-swap: 2 x 2.5" Gen4 NVMe/SATA *SAS card is required to support SAS drives Internal M.2: 1 x M.2 (PCIe 3.0 x4)	Front hot-swap: 2 x 2.5" Gen4 NVMe/SATA *SAS card is required to support SAS drives Internal M.2: 1 x M.2 (PCIe 3.0 x4)	Front hot-swap: 2 x 2.5" SATA *SATA supported only Internal M.2: 1 x M.2 (PCIe 4.0 x4)
Expansion Slots	2 x PCIe 5.0 x16 FHFL for GPU 2 x OCP 3.0 Gen5 x16	2 x PCIe 5.0 x16 FHHL 2 x OCP 3.0 Gen5 x16	1 x PCIe 5.0 x16 or 2 x PCIe 5.0 x8 FHFL 1 x PCIe 4.0 x4 FHHL
I/O Ports	Front: 2 x USB 3.2 Gen1 Rear: 2 x USB 3.2 Gen1 1 x Mini-DP 1 x RJ45 1 x MLAN	Front: 1 x USB 3.2 Gen1 Rear: 2 x USB 3.2 Gen1 1 x Mini-DP 1 x RJ45 1 x MLAN	Front: 1 x USB 3.2 Gen1 Rear: 2 x USB 3.2 Gen1 1 x Mini-DP 2 x RJ45 1 x MLAN
Security	Optional TPM 2.0 module: CTM010	Optional TPM 2.0 module: CTM010	Optional TPM 2.0 module: CTM010
Power Supply	1+1 redundant power supply [AAD1] 1600W 80+ Platinum [AAV1] 1600W 80+ Titanium	1+1 redundant power supply [AAB1] 800W 80+ Platinum [AAG1] 800W 80+ Titanium	Dual redundant power supply [AAA1] 550W 80+ Platinum [AAG1] 800W 80+ Titanium
System Management	ASPEED® AST2600 BMC GIGABYTE Management Console	ASPEED® AST2600 BMC GIGABYTE Management Console	ASPEED® AST2600 BMC GIGABYTE Management Console
Other Features	Dual ROM architecture Supports 2 x Dual slot Gen5 GPUs	Dual ROM architecture	N/A

Tower Server / Workstation



W7 Series



W5 Series

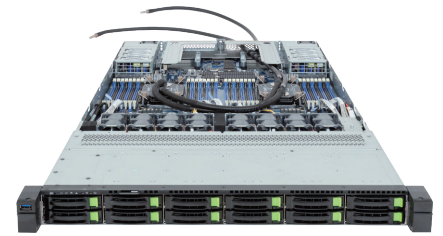
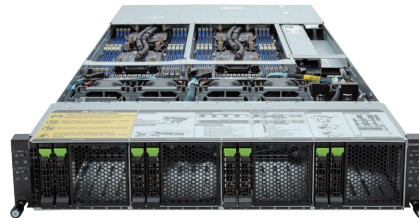
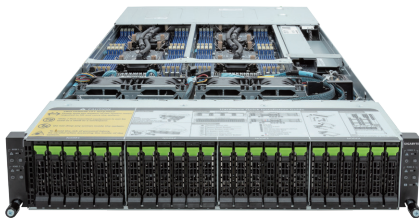
Model	W773-W80	W753-W50-AA01	W733-W30-AA01	W533-W30
Motherboard	MW83-RP0	MW53-HP0	MW34-SP0	MW34-SP0
Dimensions	W218 x H455 x D726.3 mm	W218 x H455 x D726.3 mm	W218 x H455 x D726.3 mm	W220 x H425 x D620 mm
CPU	Intel® Xeon® W-3500 / W-2500 Single processor, LGA4677	Intel® Xeon® W-2500 / W-2400 Single processor, LGA4677	14th/13th/12th Intel® Core™ Desktop Single processor, LGA1700	14th/13th/12th Intel® Core™ Desktop Single processor, LGA1700
Chipset	Intel® W790 Chipset	Intel® W790 Chipset	Intel® W680 Chipset	Intel® W680 Chipset
Memory	8-Channel RDIMM/3DS-RDIMM 8 x DDR5 DIMMs Up to 4800 MT/s	4-Channel RDIMM/3DS-RDIMM 8 x DDR5 DIMMs 4800 MT/s (1DPC), 4400 MT/s (2DPC)	2-Channel UDIMM 4 x DDR4 DIMMs Up to 3200 MT/s	2-Channel UDIMM 4 x DDR4 DIMMs Up to 3200 MT/s
LAN	2 x 10Gb/s LAN 1 x MLAN	2 x 2.5Gb/s LAN 1 x MLAN	1 x 2.5Gb/s LAN 1 x MLAN	1 x 2.5Gb/s LAN 1 x MLAN
Audio	Realtek® ALC897 HD audio codec	Realtek® ALC897 HD audio codec	Realtek® ALC897 HD audio codec	Realtek® ALC897 HD audio codec
Storage	4 x 3.5"/2.5" SATA hot-swap bays Optional 4 x 3.5"/2.5" SATA bays 5.25" space reserved for OD 2 x M.2 (PCIe 4.0 x4, 2280)	4 x 3.5"/2.5" SATA fixed bays Optional 4 x 3.5"/2.5" SATA bays 5.25" space reserved for ODD 3 x M.2 (PCIe 4.0 x4, 2280)	4 x 3.5"/2.5" SATA fixed bays Optional 4 x 3.5"/2.5" SATA bays 5.25" space reserved for ODD 1 x M.2 (PCIe 4.0 x4, 2280/22110) 3 x M.2 (PCIe 4.0 x4, 2280)	4 x 3.5"/2.5" SATA fixed bays Optional 4 x 3.5"/2.5" SATA bays 5.25" space reserved for ODD 1 x M.2 (PCIe 4.0 x4, 2280/22110) 3 x M.2 (PCIe 4.0 x4, 2280)
Expansion Slots	5 x PCIe x16 (PCIe 5.0 x16) 2 x PCIe x16 (PCIe 4.0 x16)	4 x PCIe x16 (PCIe 5.0 x16) 1 x PCIe x16 (PCIe 3.0 x4)	1 x PCIe x16 (PCIe 5.0 x16 or x8) 1 x PCIe x16 (PCIe 5.0 x0 or x8) 1 x PCIe x4 (PCIe 3.0 x4)	1 x PCIe x16 (PCIe 5.0 x16 or x8) 1 x PCIe x16 (PCIe 5.0 x0 or x8) 1 x PCIe x4 (PCIe 3.0 x4)
I/O Ports	Front: 2 x USB 3.2 Gen1 Type-A 2 x Audio jacks Rear: 1 x VGA 1 x COM 2 x 10G LAN 1 x MLAN 3 x USB 3.2 Gen2 Type-A 1 x USB 3.2 Gen2x2 Type-C 3 x Audio jacks	Front: 2 x USB 3.2 Gen1 Type-A 2 x Audio jacks Rear: 1 x VGA 1 x COM 2 x 2.5G LAN 1 x MLAN 5 x USB 3.2 Gen2 Type-A 1 x USB3.2 Gen2x2 Type-C 3 x Audio jacks	Front: 2 x USB 3.2 Gen1 Type-A 2 x Audio jacks Rear: 1 x VGA 1 x COM 1 x HDMI 1 x DP 1 x USB 3.2 Gen2x2 Type-C 3 x USB 3.2 Gen1 Type-A 1 x MLAN 1 x 2.5G LAN 3 x Audio jack	Front: 2 x USB 3.2 Gen1 Type-A Rear: 1 x VGA 1 x COM 1 x HDMI 1 x DP 1 x USB 3.2 Gen2x2 Type-C 3 x USB 3.2 Gen1 Type-A 1 x MLAN 1 x 2.5G LAN 3 x Audio jack
Security	Optional TPM 2.0 module: CTM010	Optional TPM 2.0 module: CTM010	Optional TPM 2.0 module: CTM010	Optional TPM 2.0 module: CTM010
Power Supply	2000W 80+ Gold ATX PSU	1200W 80+ Platinum ATX PSU	850W 80+ Gold ATX PSU	850W 80+ Gold ATX PSU
System Management	ASPEED® AST2600 BMC GIGABYTE Management Console	ASPEED® AST2600 BMC GIGABYTE Management Console	ASPEED® AST2600 BMC GIGABYTE Management Console	ASPEED® AST2600 BMC GIGABYTE Management Console
Other Features	Supports up to 4 x dual-slot or 2 x triple-slot GPU cards	Supports up to 2 x dual-slot or 1 x triple-slot GPU cards	Supports 1 x multi-slot GPU card	Supports 1 x multi-slot GPU card

Direct Liquid Cooling Rack



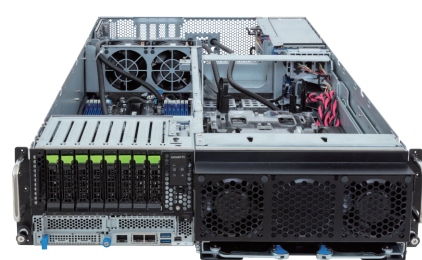
Model	DL90-ST0
Dimensions	W800 x D1200 x H1115 mm
Hardware Capacity	Up to 14U EIA servers
Heat Dissipation Capacity	9kW at approach temperature 25°C
Power Supply	1+1 redundant total power up to 17.3 kVA
Weight	Total weight: 215 kg
CDU Power Consumption	Full load: 2000W
Electrical Connection	PDU: IEC 60309 32A-3P+N+E, 6H, Plug x2 CDU: IEC 60320 C19, Plug x2
Water Flow Rate	7 - 30 LPM

Direct Liquid Cooling Server

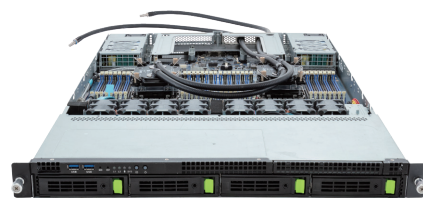
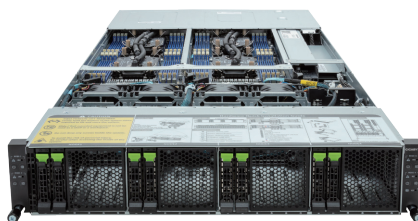
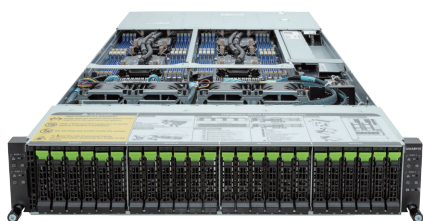


Model	H274-S60-LAW1	H274-S61-LAW1	R184-S92-LAD1
Form Factor	2U 4-Node (W440 x H87.5 x D877 mm)	2U 4-Node (W440 x H87.5 x D877 mm)	1U (W438 x H43.5 x D815 mm)
CPU	Intel® Xeon® 6 Processors (6700E/6700P/6500P-series) Dual processors per node, LGA 4710	Intel® Xeon® 6 Processors (6700E/6700P/6500P-series) Dual processors per node, LGA 4710	Intel® Xeon® 6 Processors (6700E/6700P/6500P-series) Dual processors, LGA 4710
Memory	64 x DDR5 RDIMM / MRDIMM slots	64 x DDR5 RDIMM / MRDIMM slots	32 x DDR5 RDIMM / MRDIMM slots
LAN	8 x 1Gb/s LAN 4 x MLAN	8 x 1Gb/s LAN 4 x MLAN	2 x 1Gb/s LAN 1 x MLAN
Storage	24 x 2.5" Gen5 NVMe/SATA hot-swap bays Optional 4 x M.2 (PCIe 4.0 x4)	8 x 2.5" Gen5 NVMe/SATA hot-swap bays Optional 4 x M.2 (PCIe 4.0 x4)	12 x 2.5" Gen5 NVMe/SATA hot-swap bays 3 x M.2 (PCIe 5.0 x4/ x2)
Expansion Slots	4 x PCIe 5.0 x16 LP 4 x OCP 3.0 Gen5 x16	4 x PCIe 5.0 x16 LP 4 x OCP 3.0 Gen5 x16	1 x PCIe 5.0 x16 FHHL 2 x OCP 3.0 Gen5 x16
Power Supply	Dual 3000W 80+ Titanium PSUs	Dual 3000W 80+ Titanium PSUs	Dual 1600W 80+ Titanium PSUs
Other Features	Dual ROM architecture Multiplexing Management Topology	Dual ROM architecture Multiplexing Management Topology	Dual ROM architecture

Direct Liquid Cooling Server

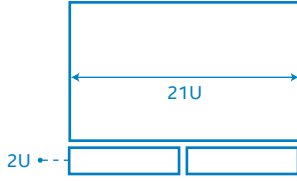
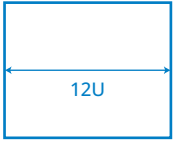


Model	G593-SD1-LAX3	G593-SD0-LAX1	G363-SR0-LAX1
Form Factor	5U (W447 x H219.7 x D945 mm)	5U (W447 x H219.7 x D945 mm)	3U (W448 x H130 x D800 mm)
CPU	5th/4th Gen Intel® Xeon® Scalable Intel® Xeon® CPU Max Series Dual processors, LGA4677	5th/4th Gen Intel® Xeon® Scalable Intel® Xeon® CPU Max Series Dual processors, LGA4677	5th/4th Gen Intel® Xeon® Scalable Intel® Xeon® CPU Max Series Dual processors, LGA4677
Memory	32 x DDR5 RDIMM slots	32 x DDR5 RDIMM slots	16 x DDR5 RDIMM slots
LAN	2 x 10Gb/s LAN 1 x MLAN	2 x 10Gb/s LAN 1 x MLAN	2 x 1Gb/s LAN 2 x 10Gb/s LAN 1 x MLAN
Storage	8 x 2.5" Gen5 NVMe/SATA hot-swap bays	8 x 2.5" Gen5 NVMe/SATA hot-swap bays	8 x Gen5 NVMe/SATA hot-swap bays 1 x M.2 (PCIe 4.0 x4)
Expansion Slots	4 x PCIe 5.0 x16 FHHL 8 x PCIe 5.0 x16 LP	12 x PCIe 5.0 x16 LP 1 x PCIe 4.0 x16 LP	6 x PCIe 5.0 x16 LP
Power Supply	4+2 3000W 80+ Titanium PSUs	4+2 3000W 80+ Titanium PSUs	2+1 3000W 80+ Titanium PSUs
Other Features	Dual ROM architecture Liquid cooled NVIDIA HGX™ H200 8-GPU	Dual ROM architecture Liquid cooled NVIDIA HGX™ H100 8-GPU	Dual ROM architecture Liquid cooled NVIDIA HGX™ H100 4-GPU



Model	H263-S62-LAW1 / LAN1	H263-S63-LAW1 / LAN1	R183-S90-LAD1
Form Factor	2U 4-Node (W440 x H87.5 x D840 mm)	2U 4-Node (W440 x H87.5 x D840 mm)	1U (W438 x H43.5 x D815 mm)
CPU	5th/4th Gen Intel® Xeon® Scalable Intel® Xeon® CPU Max Series Dual processors per node, LGA4677	5th/4th Gen Intel® Xeon® Scalable Intel® Xeon® CPU Max Series Dual processors per node, LGA4677	5th/4th Gen Intel® Xeon® Scalable Intel® Xeon® CPU Max Series Dual processors, LGA4677
Memory	64 x DDR5 RDIMM slots	64 x DDR5 RDIMM slots	32 x DDR5 RDIMM slots
LAN	4 x MLAN 1 x CMC	4 x MLAN 1 x CMC	2 x 1Gb/s LAN 1 x MLAN
Storage	24 x 2.5" Gen4 NVMe/SATA hot-swap bays Optional 4 x M.2 (PCIe 4.0 x4)	8 x 2.5" Gen4 NVMe/SATA hot-swap bays Optional 4 x M.2 (PCIe 4.0 x4)	4 x 3.5"/2.5" Gen4 NVMe/SATA hot-swap bays
Expansion Slots	4 x PCIe 5.0 x16 LP 4 x OCP 3.0 Gen5 x16	4 x PCIe 5.0 x16 LP 4 x OCP 3.0 Gen5 x16	1 x PCIe 5.0 x16 FHHL 2 x OCP 3.0 Gen5 x16
Power Supply	[LAW1] Dual 3000W 80+ Titanium PSUs [LAN1] Dual 2600W 80+ Titanium PSUs	[LAW1] Dual 3000W 80+ Titanium PSUs [LAN1] Dual 2600W 80+ Titanium PSUs	Dual 1600W 80+ Platinum PSUs
Other Features	Dual ROM architecture Ring Topology Management (optional)	Dual ROM architecture Ring Topology Management (optional)	Dual ROM architecture

Immersion Cooling Tank

Model	A1P0-EB0	A1P0-EA0
		
Hardware Capacity	21U + 2U x 2 (EIA)	12U (EIA)
Cooling Power	80 KW	40 KW
Unit Size	Tank: W1.16 x D0.91 x H1.49 m, CDU: W0.48 x D0.86 x H1.62 m	W0.87 x D1.2 x H1.56 m
Unit Weight	Tank: 450 kg (w/o coolant), CDU: 325 kg	300 kg (w/o coolant)
Coolant Tank Volume	750 Liter (615 kg)	400 Liter (320 kg)
Power Plug	PDU: IEC 60309 63A – 3P+N+E, 6H, plug x2 CDU: IEC 60320 C19, plug x1	PDU: IEC 60309 32A – 3P+N+E, 6H, plug x2
Input Power Spec	3P+N+E 63A, 380-415VAC, 50/60Hz x2 1P+N+E 15A, 220-240VAC, 50/60Hz x1	3P+N+E 32A, 380-415VAC, 50/60Hz x2
Depth Supported	900 mm	900 mm
Cooling Pipe Size	2" clamp fitting (Tube OD 50.8 mm / Flange OD 63.9 mm)	PT 1-1/4" Male Adaptor (Pipe OD 42.7 mm)
Cooling Water Inlet	20-35°C	20-35°C
Cooling Water Flow	240 LPM	100 LPM

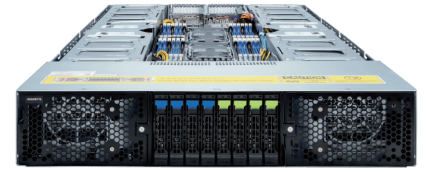


▲ A1P0-EB0 Tank

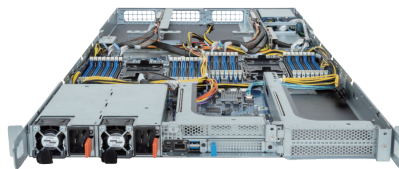


▲ A1P0-EA0 Tank

Immersion Ready Server

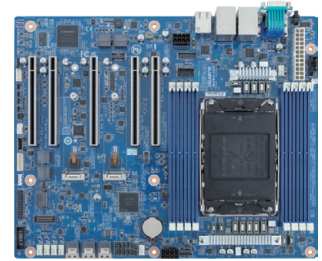
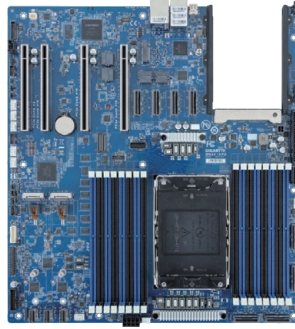
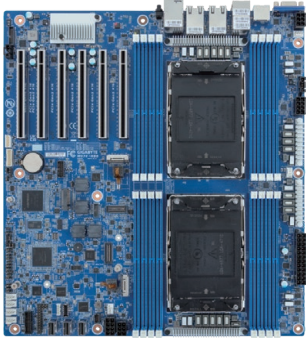


Model	H263-S64-IAW1	G293-S45-IAP1	G292-280-IAY1 / IAP1
Form Factor	2U 4-Node (W440 x H87.5 x D840 mm)	2U (W448 x H87.5 x D800 mm)	2U (W448 x H87.5 x D800 mm)
Processor	5th/4th Gen Intel® Xeon® Scalable Intel® Xeon® CPU Max Series Dual LGA4677 sockets per node	5th/4th Gen Intel® Xeon® Scalable Intel® Xeon® CPU Max Series Dual LGA4677 sockets	3rd Gen Intel® Xeon® Scalable Dual processors, LGA4189
Memory	64 x DDR5 RDIMM slots	16 x DDR5 RDIMM slots	24 x DDR4 RDIMM / LRDIMM slots
LAN	4 x MLAN 1 x CMC	2 x 10Gb/s LAN 1 x MLAN	2 x 10Gb/s LAN 1 x MLAN
Storage	8 x 2.5" Gen4 NVMe/SATA hot-swap bays Optional 4 x M.2 (PCIe 4.0 x4)	8 x 2.5" SATA/SAS hot-swap bays	4 x 2.5" Gen4 NVMe/SATA hot-swap bays 4 x 2.5" SATA/SAS hot-swap bays
Expansion Slots	4 x PCIe 5.0 x16 LP 4 x OCP 3.0 Gen5 x16	8 x PCIe 5.0 x16 FHFL for GPUs 2 x PCIe 5.0 x16 LP	8 x PCIe 4.0 x16 FHFL for GPUs 2 x PCIe 4.0 x16 LP
Power Supply	Dual 3000W 80+ Titanium PSUs Optional 2+1 redundant configuration	Dual 3000W 80+ Titanium PSUs	[IAY1] Dual 3200W 80+ Platinum PSUs [IAP1] Dual 3000W 80+ Titanium PSUs
Other Features	Dual ROM architecture Ring Topology Management (optional)	Dual ROM architecture Supports 8 x Dual slot Gen5 GPUs	Dual ROM architecture Supports 8 x Dual slot Gen4 GPUs

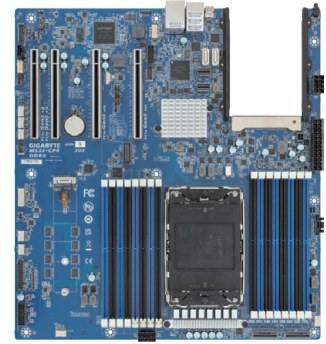
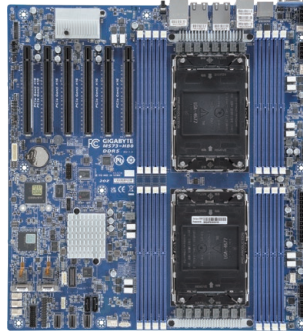
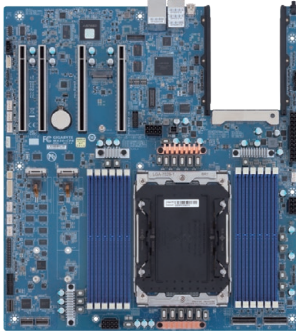


Model	R283-SF0-IAL1	R183-SF2-IAL1	S251-300-IBC1 / IBH1
Form Factor	2U (W438 x H87.5 x D815 mm)	1U (W438 x H43.5 x D900 mm)	2U (W438 x H87 x 880.5 mm)
Processor	5th/4th Gen Intel® Xeon® Scalable Intel® Xeon® CPU Max Series Dual processors per node, LGA4677	5th/4th Gen Intel® Xeon® Scalable Intel® Xeon® CPU Max Series Dual processors per node, LGA4677	2nd Gen Intel® Xeon® Scalable Intel® Xeon® W-3200 Single processor, LGA 3647
Memory	32 x DDR5 RDIMM slots	32 x DDR5 RDIMM slots	8 x DDR4 RDIMM / LRDIMM slots
LAN	1 x MLAN	1 x MLAN	2 x 1Gb/s LAN 1 x MLAN
Storage	12 x 3.5"/2.5" Gen5 NVMe/SATA hot-swap bays	2 x 2.5" Gen5 NVMe/SATA hot-swap bays	24 x 3.5" SATA/SAS hot-swap bays 2 x 2.5" SATA hot-swap bays on rear side 1 x M.2 (PCIe 3.0 x4)
Expansion Slots	4 x PCIe 5.0 x16 FHFL for GPUs 1 x PCIe 5.0 x16 FHHL 1 x OCP 3.0 Gen5 x16	4 x PCIe 5.0 x16 FHFL for GPUs 1 x PCIe 5.0 x16 FHHL 1 x PCIe 5.0 x16 FHHL 1 x PCIe 5.0 x8 LP (Internal) 1 x OCP 3.0 Gen5 x16	3 x PCIe 3.0 x16 (x16 or x8) LP 3 x PCIe 3.0 x8 (x0 or x8) LP 1 x PCIe 3.0 x4 LP
Power Supply	Dual 2700W 80+ Titanium PSUs	Dual 2700W 80+ Titanium PSUs	[IBC1] Dual 1300W 80+ Platinum PSUs [IBH1] Dual 1300W 80+ Titanium PSUs
Other Features	Dual ROM architecture Supports 4 x Dual slot Gen5 GPUs	Dual ROM architecture Supports 4 x Dual slot Gen5 GPUs	Onboard 12Gb/s SAS expander

Motherboard

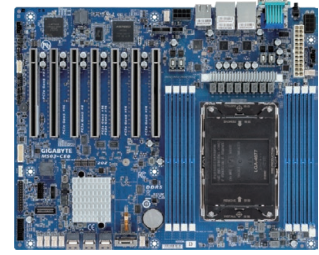
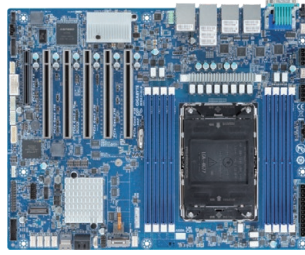
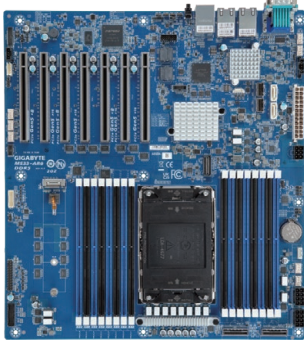


Model	MS74-HB0	MS34-CP0	MS04-CE0
Form Factor	E-ATX (W304.8 x D330.2 mm)	E-ATX (W304.8 x D330.2 mm)	ATX (W304.8 x D244 mm)
CPU	Intel® Xeon® 6 Processors (6700E/6700P/6500P-series) Dual processors, LGA 4710 TDP up to 350W	Intel® Xeon® 6 Processors (6700E/6700P/6500P-series) Single processor, LGA 4710 TDP up to 350W	Intel® Xeon® 6 Processors (6700E/6700P/6500P-series) Single processor, LGA 4710 TDP up to 350W
Chipset	System on Chip	System on Chip	System on Chip
Memory	16 x DDR5 DIMMs 8-Channel RDIMM/MRDIMM RDIMM: Up to 6400 MT/s MRDIMM: Up to 8800 MT/s ^[1]	16 x DDR5 DIMMs 8-Channel RDIMM/MRDIMM RDIMM: 6400 MT/s (1DPC), 5200 MT/s (2DPC) MRDIMM: Up to 8000 MT/s ^[1]	8 x DDR5 DIMMs 8-Channel RDIMM/MRDIMM RDIMM: Up to 6400 MT/s MRDIMM: Up to 8000 MT/s ^[1]
LAN	2 x 10Gb/s LAN 2 x 1Gb/s LAN 1 x MLAN	2 x 1Gb/s LAN 1 x MLAN	2 x 1Gb/s LAN 1 x MLAN
Video	Integrated in Aspeed® AST2600	Integrated in Aspeed® AST2600	Integrated in Aspeed® AST2600
Storage	3 x SlimSAS for 12 x SATAIII 2 x M.2 (PCIe 5.0 x4)	3 x SlimSAS for 12 x SATAIII - shared with 1 x M.2 slot 2 x MCI0 8i (PCIe 5.0 x8) for 4 x Gen5 NVMe 6 x MCI0 8i (PCIe 5.0 x8) - Require CPU with 136 PCIe lanes 1 x M.2 (PCIe 5.0 x2) 1 x M.2 (PCIe 5.0 x2) - shared with SATA support	3 x SlimSAS for 12 x SATAIII 2 x M.2 (PCIe 5.0 x2)
Expansion Slots	6 x PCIe x16 (PCIe 5.0 x16)	2 x PCIe x16 (PCIe 5.0 x16) 1 x PCIe x16 (PCIe 5.0 x16 or x8) 1 x PCIe x16 (PCIe 5.0 x8) 1 x OCP 3.0 Gen5 x16	4 x PCIe x16 (PCIe 5.0 x16) 1 x PCIe x16 (PCIe 5.0 x8)
Rear I/O	2 x USB 3.2 Gen1 1 x VGA 1 x RJ45 serial port 4 x RJ45 1 x MLAN	2 x USB 3.2 Gen1 1 x Mini-DP 2 x RJ45 1 x MLAN	4 x USB 3.2 Gen1 1 x VGA 1 x COM 2 x RJ45 1 x MLAN
Security Modules	Optional TPM2.0 module: CTM012 Optional PRoT module: CSC1200	Optional TPM2.0 module: CTM012 Optional PRoT module: CSC1200	Optional TPM2.0 module: CTM012 Optional PRoT module: CSC1200
PSU Connectors	1 x 24-pin ATX main 2 x 8-pin ATX 12V 2 x 6-pin ATX 12V	1 x 24-pin ATX main 2 x 8-pin ATX 12V 1 x 4-pin ATX 12V	1 x 24-pin ATX main 2 x 8-pin ATX 12V 1 x 6-pin ATX 12V
Board Management	ASPEED® AST2600 BMC GIGABYTE Management Console	ASPEED® AST2600 BMC GIGABYTE Management Console	ASPEED® AST2600 BMC GIGABYTE Management Console



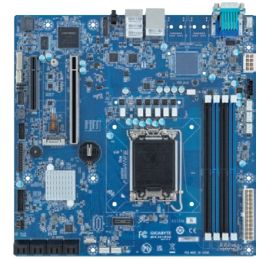
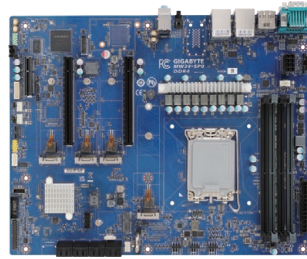
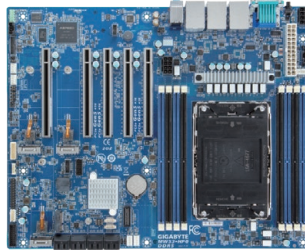
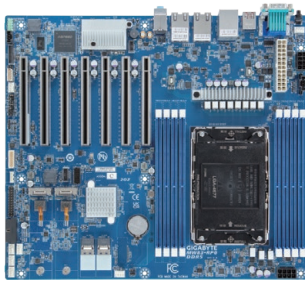
Model	MA34-CPO	MS73-HB0 / HB1 / HB2	MS33-CPO
Form Factor	E-ATX (W304.8 x D335.2 mm)	E-ATX (W304.8 x D330.2 mm)	E-ATX (W304.8 x D330.2 mm)
CPU	Intel® Xeon® 6 Processors (Intel Xeon 6900 Series) Single processor, LGA 7529 TDP up to 500W	5th/4th Gen Intel® Xeon® Scalable Dual processors, LGA 4677 TDP up to 270W	5th/4th Gen Intel® Xeon® Scalable Intel® Xeon® CPU Max Series Single processor, LGA 4677 TDP up to 350W
Chipset	System on Chip	Intel® C741 Chipset	Intel® C741 Chipset
Memory	12 x DDR5 DIMMs 12-Channel RDIMM/MRDIMM RDIMM: Up to 6400 MT/s MRDIMM: Up to 8800 MT/s ^[1]	16 x DDR5 DIMMs 8-Channel RDIMM Up to 5600 MT/s ^[2]	16 x DDR5 DIMMs 8-Channel RDIMM Up to 5600 MT/s (1DPC), 4400 MT/s (2DPC) ^[2]
LAN	2 x 1Gb/s LAN 1 x MLAN	[MS73-HB0 / HB2] 2 x 10Gb/s LAN* 2 x 1Gb/s LAN 1 x MLAN * ^[HB0] Intel X710-AT2 ^[HB2] Broadcom BCM57416	[MS73-HB1] 2 x 1Gb/s LAN 1 x MLAN
Video	Integrated in Aspeed® AST2600	Integrated in Aspeed® AST2600	Integrated in Aspeed® AST2600
Storage	3 x SlimSAS for 12 x SATAIII 2 x MCIO 8i (PCIe 5.0 x8) for 4 x Gen5 NVMe 1 x M.2 (PCIe 5.0 x2) 1 x M.2 (PCIe 5.0 x2)	3 x SlimSAS for 12 x SATAIII 2 x 7-pin SATA DOM 2 x M.2 (PCIe 4.0 x4)	2 x SlimSAS for 8 x SATAIII 2 x 7-pin SATAIII 1 x M.2 (PCIe 3.0 x4)
Expansion Slots	2 x PCIe x16 (PCIe 5.0 x16) 1 x PCIe x16 (PCIe 5.0 x16 or x8) 1 x PCIe x16 (PCIe 5.0 x8) 1 x OCP 3.0 Gen5 x16	6 x PCIe x16 (PCIe 5.0 x16)	2 x PCIe x16 (PCIe 5.0 x16) 1 x PCIe x16 (PCIe 5.0 x16 or x8) 1 x PCIe x16 (PCIe 5.0 x8) 1 x OCP 3.0 Gen5 x16 slot
Rear I/O	2 x USB 3.2 Gen1 1 x Mini-DP 2 x RJ45 1 x MLAN	[MS73-HB0 / HB2] 2 x USB 3.2 Gen1 1 x VGA 1 x RJ45 COM 4 x RJ45 1 x MLAN	[MS73-HB1] 2 x USB 3.2 Gen1 1 x VGA 1 x RJ45 COM 2 x RJ45 1 x MLAN
Security Modules	Optional TPM2.0 module: CTM012 Optional PRoT module: CSC1200	Optional TPM2.0 module: CTM010	Optional TPM2.0 module: CTM010
PSU Connectors	1 x 24-pin ATX main 3 x 8-pin ATX 12V 1 x 4-pin ATX 12V	1 x 24-pin ATX main 2 x 8-pin ATX 12V 2 x 6-pin ATX 12V	1 x 24-pin ATX main 2 x 8-pin ATX 12V 1 x 6-pin ATX 12V
Board Management	ASPEED® AST2600 BMC GIGABYTE Management Console	ASPEED® AST2600 BMC GIGABYTE Management Console	ASPEED® AST2600 BMC GIGABYTE Management Console

Motherboard



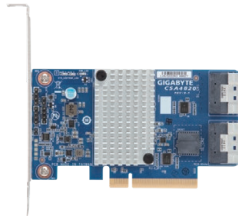
Model	MS33-AR0 / AR1	MS03-6L0	MS03-CEO
Form Factor	E-ATX (W304.8 x D330.2 mm)	ATX (W304.8 x D244 mm)	ATX (W304.8 x D244 mm)
CPU	5th/4th Gen Intel® Xeon® Scalable Intel® Xeon® CPU Max Series Single processor, LGA 4677 TDP up to 350W	5th/4th Gen Intel® Xeon® Scalable Intel® Xeon® CPU Max Series Single processor, LGA 4677 TDP up to 350W	5th/4th Gen Intel® Xeon® Scalable Intel® Xeon® CPU Max Series Single processor, LGA 4677 TDP up to 350W
Chipset	Intel® C741 Chipset	Intel® C741 Chipset	Intel® C741 Chipset
Memory	16 x DDR5 DIMMs 8-Channel RDIMM Up to 5600 MT/s (1DPC), 4400 MT/s (2DPC) ^[2]	8 x DDR5 DIMMs 8-Channel RDIMM Up to 5600 MT/s ^[2]	8 x DDR5 DIMMs 8-Channel RDIMM Up to 5600 MT/s ^[2]
LAN	2 x 10Gb/s LAN* 1 x MLAN *[AR0] Intel X710-AT2 [AR1] Broadcom BCM57416	2 x 10Gb/s LAN 4 x 1Gb/s LAN 1 x MLAN	2 x 1Gb/s LAN 1 x MLAN
Video	ASPEED® AST2600 Integrated Graphics	ASPEED® AST2600 Integrated Graphics	ASPEED® AST2600 Integrated Graphics
Audio	N/A	Realtek® ALC897 HD Audio Codec	N/A
Storage	2 x SlimSAS for 8 x SATAIII 2 x 7-pin SATAIII 1 x M.2 (PCIe 3.0 x4)	1 x SlimSAS for 4 x SATAIII 2 x SATAIII 1 x M.2 (PCIe 3.0 x4)	3 x SlimSAS for 12 x SATAII 1 x M.2 (PCIe 3.0 x4)
Expansion Slots	1 x PCIe x16 (PCIe 5.0 x16) 3 x PCIe x16 (PCIe 5.0 x16 or x8) 3 x PCIe x16 (PCIe 5.0 x8)	4 x PCIe x16 (PCIe 5.0 x16) 1 x PCIe x16 (PCIe 5.0 x16 or x8) 1 x PCIe x8 (PCIe 5.0 x8)	3 x PCIe x16 (PCIe 5.0 x16) 2 x PCIe x16 (PCIe 5.0 x16 or x8) 2 x PCIe x16 (PCIe 5.0 x8)
Rear I/O	2 x USB 3.2 Gen1 1 x VGA 1 x COM 2 x RJ45 1 x MLAN	2 x USB 3.2 Gen1 1 x VGA 1 x COM 6 x RJ45 1 x MLAN	4 x USB 3.2 Gen1 1 x VGA 1 x COM 2 x RJ45 1 x MLAN
Security	Optional TPM2.0 module: CTM010	Optional TPM2.0 module: CTM010	Optional TPM2.0 module: CTM010
PSU Connectors	1 x 24-pin ATX main 2 x 8-pin ATX 12V 1 x 6-pin ATX 12V	1 x 24-pin ATX main 2 x 8-pin ATX 12V	1 x 24-pin ATX main 2 x 8-pin ATX 12V
Board Management	ASPEED® AST2600 BMC GIGABYTE Management Console	ASPEED® AST2600 BMC GIGABYTE Management Console	ASPEED® AST2600 BMC GIGABYTE Management Console

Motherboard

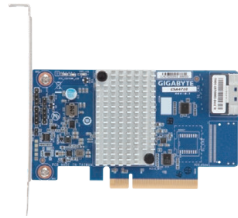


Model	MW83-RP0	MW53-HP0	MW34-SP0	MX34-BS0
Form Factor	CEB (W304.8 x D266.7 mm)	ATX (W304.8 x D244 mm)	ATX (W305 x D244 mm)	microATX (W244 x D244 mm)
CPU	Intel® Xeon® W-3400/W-3500 Intel® Xeon® W-2400/W-2500 Single processor, LGA 4677 TDP up to 385W	Intel® Xeon® W-3400/W-3500 Intel® Xeon® W-2400/W-2500 Single processor, LGA 4677 TDP up to 385W	14th Gen Intel® Core™ Desktop 13th Gen Intel® Core™ Desktop 12th Gen Intel® Core™ Desktop Single processor, LGA 1700	Intel® Xeon® E-2400 Intel® Pentium® Gold G7400 / G7400T Single processor, LGA1700
Chipset	Intel® W790 Chipset	Intel® W790 Chipset	Intel® W680 Chipset	Intel® C262 Chipset
Memory	8 x DDR5 DIMMs 8-Channel RDIMM Up to 4800 MT/s	8 x DDR5 DIMMs 4-Channel RDIMM Up to 4800 MT/s (1DPC), 34400 MT/s (2DPC)	4 x DDR4 DIMMs 2-Channel ECC UDIMM Up to 3200 MT/s	4 x DDR5 DIMMs 2-Channel ECC UDIMM Up to 4400 MT/s (1DPC), 4000 MT/s (2DPC/1R), 3600 MT/s (2DPC/2R)
LAN	2 x 10Gb/s LAN 1 x MLAN	2 x 2.5Gb/s LAN 1 x MLAN	1 x 2.5Gb/s LAN 1 x MLAN	2 x 1Gb/s LAN 1 x MLAN
Video	Integrated in Aspeed® AST2600	Integrated in Aspeed® AST2600	Integrated in Intel® Processor Integrated in Aspeed® AST2600	Integrated in Aspeed® AST2600
Audio	Realtek® ALC897 HD Audio Codec	Realtek® ALC897 HD Audio Codec	Realtek® ALC897 HD Audio Codec	N/A
Storage	2 x SlimSAS for 8 x SATAIII	8 x SATAIII	4 x SATAIII 4 x SATAIII - shared with 1 x M.2 slot 3 x M.2 (PCIe 4.0 x4) 1 x M.2 (PCIe 4.0 x4) - shared with SATA	8 x SATAIII 1 x M.2 (PCIe 4.0 x4)
Expansion Slots	5 x PCIe x16 (PCIe 5.0 x16) 2 x PCIe x16 (PCIe 4.0 x16) 2 x M.2 (PCIe 4.0 x4)	4 x PCIe x16 (PCIe 5.0 x16) 1 x PCIe x16 (PCIe 3.0 x4) 3 x M.2 (PCIe 4.0 x4) 1 x M.2 (PCIe 3.0 x1) for WiFi	1 x PCIe x16 (PCIe 5.0 x16 or x8) 1 x PCIe x16 (PCIe 5.0 x0 or x8) 1 x PCIe x4 (PCIe 3.0 x4) 1 x M.2 (PCIe 3.0 x1) for WiFi	1 x PCIe x16 (PCIe 5.0 x16) 1 x PCIe x8 (PCIe 4.0 x4)
Rear I/O	3 x USB 3.2 Gen2 Type-A 1 x USB 3.2 Gen2x2 Type-C 1 x VGA 1 x COM 2 x RJ45 1 x MLAN 1 x 3in1 Audio Jack	5 x USB 3.2 Gen2 Type-A 1 x USB 3.2 Gen2x2 Type-C 1 x VGA 1 x COM 2 x RJ45 1 x MLAN 1 x 3in1 Audio Jack	3 x USB 3.2 Gen1 Type-A 1 x USB 3.2 Gen2x2 Type-C 1 x VGA 1 x COM 1 x HDMI 1 x DP 1 x MLAN 1 x 2.5G LAN 1 x 3in1 Audio Jack	2 x USB 3.2 Gen1 1 x COM 1 x VGA 2 x RJ45 1 x MLAN
Security	Optional TPM2.0 module: CTM010	Optional TPM2.0 module: CTM010	Optional TPM2.0 module: CTM010	Optional TPM2.0 module: CTM010
PSU Connectors	1 x 24-pin ATX main 2 x 8-pin ATX 12V	1 x 24-pin ATX main 2 x 8-pin ATX 12V	1 x 24-pin ATX main 1 x 8-pin ATX 12V	1 x 24-pin ATX main 1 x 8-pin ATX 12V
Board Management	ASPEED® AST2600 BMC GIGABYTE Management Console	ASPEED® AST2600 BMC GIGABYTE Management Console	ASPEED® AST2600 BMC GIGABYTE Management Console	ASPEED® AST2600 BMC GIGABYTE Management Console

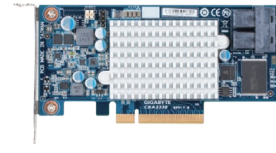
Storage Adapter



CSA4820

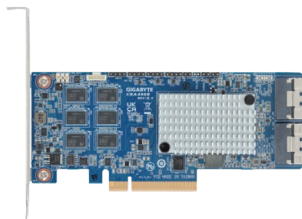


CSA4710

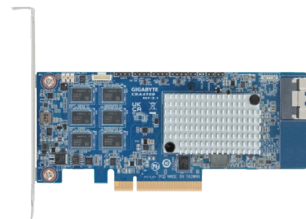


CRA3338

Ports	2 x SlimLine SAS 8i connectors Up to 16 x SAS/SATA physical devices Up to 4 x NVMe physical devices Max. 1024 x SAS/SATA or 32 x NVMe devices	1 x SlimLine SAS 8i connector Up to 8 x SAS/SATA physical devices Up to 2 x NVMe physical devices Max. 1024 x SAS/SATA or 32 x NVMe devices	2 x Mini-SAS HD SFF8643 connectors Up to 8 x SAS 12Gb/s ports Up to 14 x physical devices with SAS expander
Controller	Broadcom® SAS3816	Broadcom® SAS3808	Broadcom® SAS3008
RAID	Non-RAID supported	Non-RAID supported	RAID 0/1/1E/10
Interface	PCIe x8 (Gen4 x8)	PCIe x8 (Gen4 x8)	PCIe x8 (Gen3 x8)
Format	Half-length 68.9 x 120 mm	Half-length 68.9 x 120 mm	Half-length 64.4 x 167.6 mm



CRA4960 / CRA4961

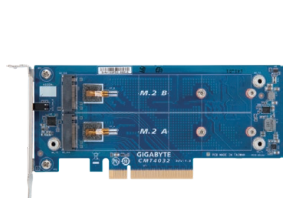


CRA4760 / CRA4761

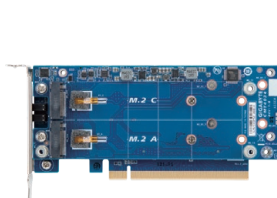


CRA4448

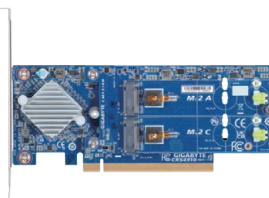
Ports	2 x Slimline SAS 8i connectors Up to 16 x SAS/SATA physical devices Up to 4 x NVMe physical devices [CRA4960] Max. 32 x SAS/SATA with SAS expander [CRA4961] Max. 240 x SAS/SATA with SAS expander	1 x Slimline SAS 8i connector Up to 8 x SAS/SATA physical devices Up to 2 x NVMe physical devices [CRA4760] Max. 32 x SAS/SATA with SAS expander [CRA4761] Max. 240 x SAS/SATA with SAS expander	2 x Internal Mini-SAS HD SFF8643 connectors Up to 8 x SAS 12Gb/s port Up to 32 x physical devices with SAS expander
Controller	Broadcom® SAS3916	Broadcom® SAS3908	Broadcom® SAS3108
RAID	Hardware RAID 0/1/1E/5/6/10/50/60 8GB 2666 MHz DDR4 cache memory (Optional) CacheVault Flash Cache Protection	Hardware RAID 0/1/1E/5/6/10/50/60 8GB 2666 MHz DDR4 cache memory (Optional) CacheVault Flash Cache Protection	Hardware RAID 0/1/5/6/10/50/60 2GB DDR3 cache memory (Optional) CacheVault Flash Cache Protection Module
Interface	PCIe x8 (Gen4 x8)	PCIe x8 (Gen4 x8)	PCIe x8 (Gen3 x8)
Format	Half-length 68.9 x 167 mm	Half-length 68.9 x 167 mm	Half-length 168 x 68.9 mm



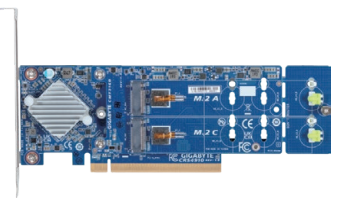
CMT4032



CMT4034



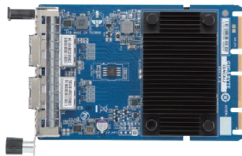
CMT3060



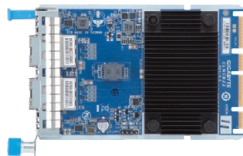
CMT3160

Ports	2 x M.2 slots M key, type 2280/22110 support PCIe SSD support only	4 x M.2 slots M key, type 2280/22110 support PCIe SSD support only	4 x M.2 slots M key, type 2280 support PCIe SSD support only	4 x M.2 slots M key, type 2280/22110 support PCIe SSD support only
Controller	-	-	Broadcom® SAS3816	Broadcom® SAS3816
RAID	-	-	RAID 0/1/10	RAID 0/1/10
Interface	PCIe x8 (Gen3 x8)	PCIe x16 (Gen3 x16)	PCIe x16 (Gen4 x8)	PCIe x16 (Gen4 x8)
Format	Low-profile 68.9 x 150 mm	Low-profile 68.9 x 150 mm	Low-profile 68.9 x 167.5 mm	Low-profile 68.9 x 197.99 mm

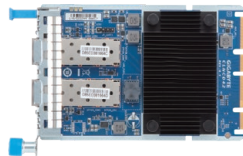
LAN Adapter



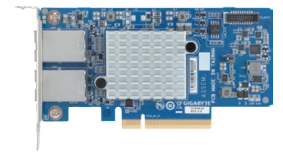
CLNCA12



CLNCB22

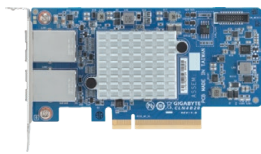


CLNCD42

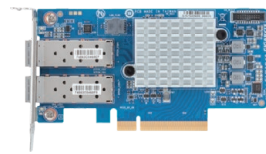


CLN4A10

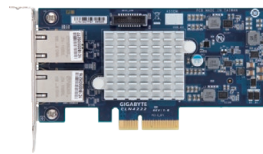
Ports	2 x 1G BASE-T RJ45 LAN ports Supports 1Gb/s, 100Mb/s, 10Mb/s	2 x 10G BASE-T RJ45 LAN ports Supports 10Gb/s, 1Gb/s per port	2 x SFP28 LAN ports Supports 25Gb/s, 10Gb/s per port	2 x 1G BASE-T RJ45 LAN ports Supports 1Gb/s, 100Mb/s, 10Mb/s
Controller	Broadcom® BCM5720	Broadcom® BCM57416	Broadcom® BCM57414	Broadcom® BCM5720
Interface	PCIe x16 (Gen2.1 x2)	PCIe x16 (Gen3 x8)	PCIe x16 (Gen3 x8)	PCIe x8 (Gen2 x2)
Format	OCP 3.0 form factor 76 x 115 x 14.2 mm	OCP 3.0 form factor 76 x 115 x 14.2 mm	OCP 3.0 form factor 76 x 115 x 14.2 mm	MD2 Low-profile 68.9 x 130 mm



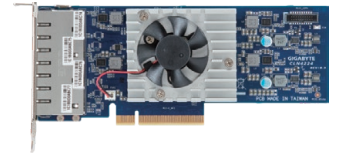
CLN4B20



CLN4D40



CLN4222



CLN4224

Ports	2 x 10G BASE-T RJ45 LAN ports Supports 10Gb/s, 1Gb/s per port	2 x SFP28 LAN ports Supports 25Gb/s, 10Gb/s, 1Gb/s	2 x 10G BASE-T RJ45 LAN ports Supports 10Gb/s, 1Gb/s per port	4 x 10G BASE-T RJ45 LAN ports Supports 10Gb/s, 1Gb/s per port
Controller	Broadcom® BCM57416	Broadcom® BCM57414	Intel® X550-AT2	2 x Intel® X550-AT2
Interface	PCIe x8 (Gen3 x8)	PCIe x8 (Gen3 x8)	PCIe x4 (Gen3 x4)	PCIe x8 (Gen3 x8)
Format	MD2 Low-profile 68.9 x 131 mm	MD2 Low-profile 68.9 x 130 mm	Half-length 68.9 x 131 mm	Half-length 68.9 x 168 mm



Ring Topology Kit

Ports	1 x 1Gb/s LAN management port
Controller	Realtek® RTL8370N-VB
Dimension	174 x 41 mm (Including chassis kit)

Management Module



TPM 2.0



TPM 2.0

Model	CTM010	CTM012
Controller	Infineon SLB9670VQ2	Infineon SLB9672VU2.0
Interface	2 x 7 pin header	2 x 7 pin header
Dimension	20 x 15 mm	20.32 x 14.73 mm

Security Module

Global After Sales Service & Support

GIGABYTE can provide the following expert services to give our customers total peace of mind:



Multi-level, multilingual telephone & online technical support

Current services provided:

Country	Service (Optional 24/7 technical support hotline available)
Global	Online support: https://esupport.gigabyte.com
Taiwan	9/5 support hotline: 0800-079-800 (Toll free) or 02-8913-1377 Live online chat: https://www.gigabyte.com/tw/Support
USA	9/5 support hotline: +1-(626)-854-9338 option 4
Europe	9/5 support hotline: +44 1256 300 809 (English, French, German, Italian, Spanish)

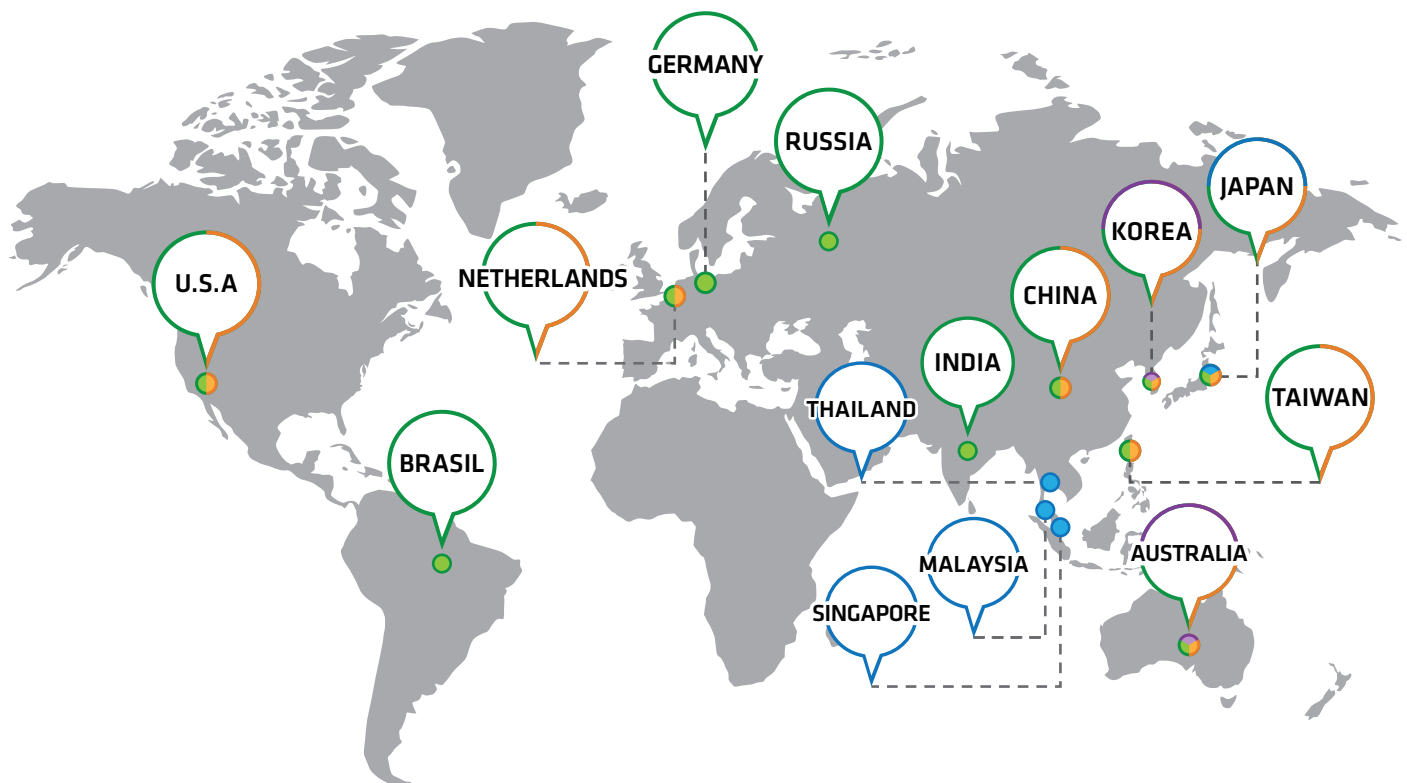


Globally located RMA & repair centers, onsite technical support services



Reverse logistics, product warehousing and component storage solutions

There is also the potential to utilize GIGABYTE's existing service and support network by request, which includes an additional 60 physical repair & support centers located in 12 additional countries.



● Logistics Hub
 ● RMA / Repair Center
 ● Authorized Partner Repair Center / Field Service
 ● Conditional Service
*Optional per sales condition / agreement *Check with sales team for detail

GIGABYTE™

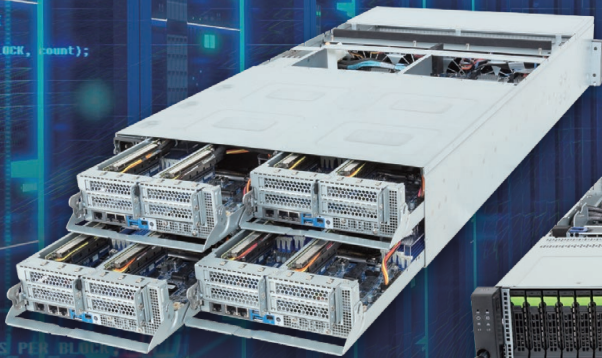
E-series



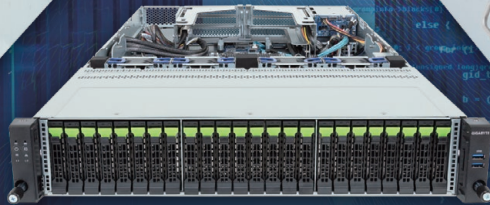
S-series



H-series



R-series



G-series



Where Compute Reigns

Server Solutions for the Intel® Xeon® Processors





gigacomputing.com

 Giga Computing

 Giga Computing

 GIGABYTEServer

 GIGABYTEChannel



Designed by

- * All intellectual property rights, including without limitation to copyright and trademark of this work and its derivative works are the property of, or are licensed to, Giga Computing Technology Co., Ltd. Any unauthorized use is strictly prohibited.
- * The entire materials provided herein are for reference only. Giga Computing reserves the right to modify or revise the content at anytime without prior notice.
- * Intel, the Intel logo, and other Intel marks are trademarks of Intel Corporation or its subsidiaries. Other product names used in this publication are for identification purposes only and may be trademarks of their respective companies.