

GIGABYTE™

AMD-based Server Solutions

Servers / Motherboards / Barebone Servers / Accessories



2025 1H

AMD
EPYC

AMD
INSTINCT
MI300 Series

About Giga Computing

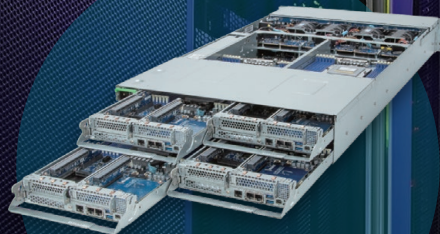
Giga Computing Technology is an industry innovator and leader in the enterprise computing market. Having spun off from GIGABYTE, we maintain hardware expertise in manufacturing and product design, while operating as a standalone business that can drive more investment into core competencies. We offer a complete product portfolio that addresses all workloads from the data center to edge including traditional and emerging workloads in HPC and AI to data analytics, 5G/edge, cloud computing, and more. Our longstanding partnerships with key technology leaders ensure that our new products will be the most advanced and launch with new partner platforms. Our systems embody performance, security, scalability, and sustainability.

GPU Server (P. 3)



Offering industry leading GPU density due to excellent thermal and mechanical design, and built for HPC, AI, and high-performance parallel processing

High-density Server (P. 10)



Combining four hot-swappable nodes in a 2U chassis, offering extreme CPU compute density excellent for HPC, HCI, and edge computing

Storage Server (P. 9)



Designed to accommodate an incredible volume of hard drives and to be compatible with modern storage software

Rack Server (P. 12)



1U and 2U general-purpose systems, offering the best balance of compute, memory, storage, and expandability

Edge Server (P. 24)



1U and 2U short depth servers, moving data collection away from data centers and improving latency

Tower Server / Workstation (P. 26)



Deliver simplicity, versatility and high performance for animation studios, and software developers

Direct Liquid Cooling (P. 27)



Efficient cooling & heat dissipation for performance demanding servers are possible with direct to chip liquid cooling

Immersion Cooling (P. 28)



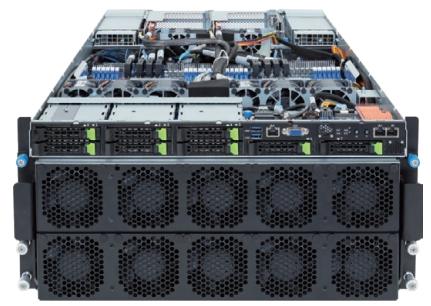
Submerging servers, for any enterprise application, in a single-phase immersion cooling solution produces the most efficient outcome

Motherboard (P. 30)



Single and dual socket options supporting Gen4/ Gen5 NVMe drives and PCIe 4.0 and/or 5.0 lanes

GPU Server



Model	G893-ZD1-AAX3 / AAX5	G593-ZD1 /ZD2	G593-ZX1-AAX1
Motherboard	MZB3-PE0	MZB3-G43	MZB3-G43
Form Factor	8U (W447 x H351 x D900 mm)	5U (W447 x H219.7 x D945 mm)	5U (W447 x H221.2 x D965 mm)
GPU	[G893-ZD1-AAX3] NVIDIA HGX™ H200 8-GPU (8-root ports) [G893-ZD1-AAX5] NVIDIA HGX™ B200 8-GPU (8-root ports)	[G593-ZD1-AAX3] NVIDIA HGX™ H200 8-GPU (8-root ports) [G593-ZD1-AAX1] NVIDIA HGX™ H100 8-GPU (8-root ports) [G593-ZD2-AAX1] NVIDIA HGX™ H100 8-GPU (4-root ports)	[G593-ZX1-AAX1] AMD Instinct™ MI300X 8-GPU (8-root ports)
CPU	AMD EPYC™ 9005/9004 series Dual processors, Socket SP5	AMD EPYC™ 9005/9004 series Dual processors, Socket SP5 cTDP up to 500W at ambient 25°C	AMD EPYC™ 9005/9004 series Dual processors, Socket SP5 cTDP up to 500W at ambient 25°C
Chipset	System on Chip	System on Chip	System on Chip
Memory	12-Channel DDR5 RDIMM, 24 x DIMMs [EPYC 9005] Up to 6000 MT/s [EPYC 9004] Up to 4800 MT/s	12-Channel DDR5 RDIMM, 24 x DIMMs [EPYC 9005] Up to 6000 MT/s [EPYC 9004] Up to 4800 MT/s	12-Channel DDR5 RDIMM, 24 x DIMMs [EPYC 9005] Up to 6000 MT/s [EPYC 9004] Up to 4800 MT/s
LAN	2 x 10Gb/s LAN 1 x MLAN	2 x 10Gb/s LAN 1 x MLAN	2 x 10Gb/s LAN 1 x MLAN
Storage	Front hot-swap: 8 x 2.5" Gen5 NVMe/SATA/SAS4 *Storage card is required to support SATA & SAS Internal M.2: 1 x M.2 (PCIe 3.0 x4) 1 x M.2 (PCIe 3.0 x1)	Front hot-swap: 8 x 2.5" Gen5 NVMe/SATA/SAS4 *Storage card is required to support SATA & SAS Internal M.2: 1 x M.2 (PCIe 3.0 x4) 1 x M.2 (PCIe 3.0 x1)	Front hot-swap: 8 x 2.5" Gen5 NVMe/SATA/SAS4 *Storage card is required to support SATA & SAS Internal M.2: 1 x M.2 (PCIe 3.0 x4) 1 x M.2 (PCIe 3.0 x1)
Expansion Slots	4 x PCIe 5.0 x16 FHHL (Dual slot) 8 x PCIe 5.0 x16 FHHL (Single slot)	4 x PCIe 5.0 x16 FHHL *Compatible with NVIDIA BlueField®-3 DPUs 8 x PCIe 5.0 x16 LP	4 x PCIe 5.0 x16 FHHL 8 x PCIe 5.0 x16 LP
I/O Ports	Front: 2 x USB 3.2 Gen1 1 x VGA 2 x RJ45 1 x MLAN (default) Rear: 1 x MLAN	Front: 2 x USB 3.2 Gen1 1 x VGA 2 x RJ45 1 x MLAN (default) Rear: 1 x MLAN	Front: 2 x USB 3.2 Gen1 1 x VGA 2 x RJ45 1 x MLAN (default) Rear: 1 x MLAN
Security	Optional TPM 2.0 module: CTM010	Optional TPM 2.0 module: CTM010	Optional TPM 2.0 module: CTM010
Power Supply	6+6 redundant power supply 3000W 80+ Titanium	4+2 redundant power supply 3000W 80+ Titanium	4+2 redundant power supply 3000W 80+ Titanium
System Management	ASPEED® AST2600 BMC GIGABYTE Management Console	ASPEED® AST2600 BMC GIGABYTE Management Console	ASPEED® AST2600 BMC GIGABYTE Management Console
Other Features	Dual ROM architecture	Dual ROM architecture [G593-ZD2] NVIDIA-Certified Systems™	Dual ROM architecture

GPU Server

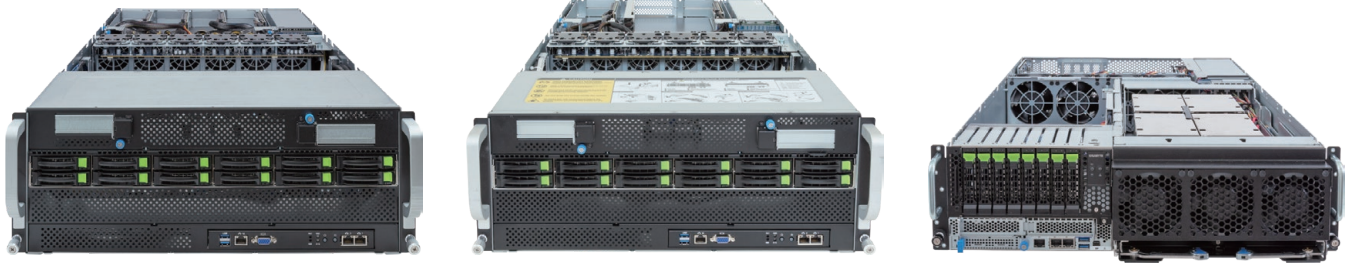


Model	G493-ZB0-AAP1	G493-ZB1-AAP1	G493-ZB2-AAP1
Motherboard	MZB3-G43	MZB3-G41	MZB3-G41
Form Factor	4U (W448 x H176 x D880 mm)	4U (W448 x H176 x D880 mm)	4U (W448 x H176 x D880 mm)
GPU	Supports 8 x Dual slot Gen5 GPUs (without PCIe switches)	Supports 10 x Dual slot Gen5 GPUs (with PCIe switches)	Supports 8 x Dual slot Gen5 GPUs (with PCIe switches)
CPU	AMD EPYC™ 9005/9004 series Dual processors, Socket SP5 cTDP up to 500W at ambient 25°C	AMD EPYC™ 9005/9004 series Dual processors, Socket SP5 cTDP up to 500W at ambient 25°C	AMD EPYC™ 9005/9004 series Dual processors, Socket SP5 cTDP up to 500W at ambient 25°C
Chipset	System on Chip	System on Chip	System on Chip
Memory	12-Channel DDR5 RDIMM, 24 x DIMMs [EPYC 9005] Up to 6000 MT/s [EPYC 9004] Up to 4800 MT/s	12-Channel DDR5 RDIMM, 48 x DIMMs [EPYC 9005] Up to 5200 MT/s (1DPC) ^[1] [EPYC 9004] Up to 4800 MT/s (1DPC) ^[2]	12-Channel DDR5 RDIMM, 48 x DIMMs [EPYC 9005] Up to 5200 MT/s (1DPC) ^[1] [EPYC 9004] Up to 4800 MT/s (1DPC) ^[2]
LAN	2 x 10Gb/s LAN 1 x MLAN	2 x 1Gb/s LAN 1 x MLAN	2 x 1Gb/s LAN 1 x MLAN
Storage	Front hot-swap: N/A Internal M.2: 1 x M.2 (PCIe 3.0 x4) 1 x M.2 (PCIe 3.0 x1)	Front hot-swap: 8 x 2.5" Gen5 NVMe/SATA/SAS4 4 x 2.5" SATA/SAS4 *SAS card is required to support SAS drives Internal M.2: 2 x M.2 (PCIe 3.0 x4)	Front hot-swap: 12 x 2.5" Gen5 NVMe/SATA/SAS4 *SAS card is required to support SAS drives Internal M.2: 2 x M.2 (PCIe 3.0 x4)
Expansion Slots	8 x PCIe 5.0 x16 FHFL for GPUs 2 x PCIe 5.0 x16 FHFL	10 x PCIe 5.0 x16 FHFL for GPUs 2 x PCIe 5.0 x16 LP	8 x PCIe 5.0 x16 FHFL for GPUs 4 x PCIe 5.0 x16 FHFL 2 x PCIe 5.0 x16 LP
I/O Ports	Front: 2 x USB 3.2 Gen1 1 x VGA 2 x RJ45 1 x MLAN Rear: N/A	Front: 2 x USB 3.2 Gen1 1 x VGA 2 x RJ45 1 x MLAN Rear: N/A	Front: 2 x USB 3.2 Gen1 1 x VGA 2 x RJ45 1 x MLAN Rear: N/A
Security	Optional TPM 2.0 module: CTM010	Optional TPM 2.0 module: CTM010	Optional TPM 2.0 module: CTM010
Power Supply	3+1 redundant power supply 3000W 80+ Titanium	3+1 redundant power supply 3000W 80+ Titanium	3+1 redundant power supply 3000W 80+ Titanium
System Management	ASPEED® AST2600 BMC GIGABYTE Management Console	ASPEED® AST2600 BMC GIGABYTE Management Console	ASPEED® AST2600 BMC GIGABYTE Management Console
Other Features	Dual ROM architecture	Dual ROM architecture NVIDIA-Certified Systems™	Dual ROM architecture

^[1] AMD EPYC™ 9005 series CPU: Up to 5200 MT/s (1DPC), 4400 MT/s (1R 2DPC), 4000 MT/s (2R 2DPC)

^[2] AMD EPYC™ 9004 series CPU: Up to 4800 MT/s (1DPC), 3600 MT/s (2DPC)

GPU Server



Model	G493-ZB3-AAP1	G493-ZB4-AAP1	G363-ZR0-AAX1
Motherboard	MZB3-G41	MZB3-G41	MZ83-HD1
Form Factor	4U (W448 x H176 x D880 mm)	4U (W448 x H176 x D880 mm)	3U (W448 x H130 x D800 mm)
GPU	Supports 8 x Dual slot Gen5 GPUs (with PCIe switches)	Optimized for NVIDIA OVX™ L40S Server with 8 GPUs config. (with PCIe switches)	NVIDIA HGX™ H100 4-GPU (with PCIe switches)
CPU	AMD EPYC™ 9005/9004 series Dual processors, Socket SP5 cTDP up to 500W at ambient 25°C	AMD EPYC™ 9005/9004 series Dual processors, Socket SP5 NVIDIA OVX spec: 2 x AMD EPYC™ 9554	AMD EPYC™ 9005/9004 series Dual processors, Socket SP5 cTDP up to 400W at ambient 35°C
Chipset	System on Chip	System on Chip	System on Chip
Memory	12-Channel DDR5 RDIMM, 48 x DIMMs [EPYC 9005] Up to 5200 MT/s (1DPC) [1] [EPYC 9004] Up to 4800 MT/s (1DPC) [2]	12-Channel DDR5 RDIMM, 48 x DIMMs Up to 5200 MT/s [1], 4800 MT/s [2] NVIDIA OVX spec: Minimum 768GB DDR5 ECC	12-Channel DDR5 RDIMM, 24 x DIMMs [EPYC 9005] Up to 6000 MT/s [EPYC 9004] Up to 4800 MT/s
LAN	2 x 1Gb/s LAN 1 x MLAN	2 x 1Gb/s LAN 1 x MLAN	2 x 10Gb/s LAN 2 x 1Gb/s LAN 1 x MLAN
Storage	Front hot-swap: 12 x 2.5" Gen5 NVMe/SATA/SAS4 *SAS card is required to support SAS drives Internal M.2: 2 x M.2 (PCIe 3.0 x4)	Front hot-swap: 12 x 2.5" Gen5 NVMe/SATA/SAS4 NVIDIA OVX spec: 1 x 1TB NVMe Host Boot Drive, 2 x 4TB NVMe Host Storage Internal M.2: 2 x M.2 (PCIe 3.0 x4)	Front hot-swap: 4 x 2.5" Gen5 NVMe/SATA/SAS 4 x 2.5" Gen5 NVMe *SAS card is required to support SAS drives Internal M.2: 1 x M.2 (PCIe 4.0 x4)
Expansion Slots	8 x PCIe 5.0 x16 FHFL for GPUs 10 x PCIe 5.0 x16 LP	8 x PCIe 5.0 x16 FHFL for GPUs 2 x PCIe 5.0 x16 FHFL 4 x PCIe 5.0 x16 LP NVIDIA OVX spec: 8 x NVIDIA L40S GPUs, 1 x BlueField-3 B3220 DPU, 4 x ConnectX-7 NICs	6 x PCIe 5.0 x16 LP
I/O Ports	Front: 2 x USB 3.2 Gen1 1 x VGA 2 x RJ45 1 x MLAN Rear: N/A	Front: 2 x USB 3.2 Gen1 1 x VGA 2 x RJ45 1 x MLAN Rear: N/A	Front: 2 x USB 3.2 Gen1 1 x Mini-DP 2 x RJ45 (1GbE) 1 x MLAN (default) Rear: 1 x MLAN 2 x RJ45 (10GbE)
Security	Optional TPM 2.0 module: CTM010	Optional TPM 2.0 module: CTM010	Optional TPM 2.0 module: CTM010
Power Supply	3+1 redundant power supply 3000W 80+ Titanium	3+1 redundant power supply 3000W 80+ Titanium	2+1 redundant power supply 3000W 80+ Titanium
System Management	ASPEED® AST2600 BMC GIGABYTE Management Console	ASPEED® AST2600 BMC GIGABYTE Management Console	ASPEED® AST2600 BMC GIGABYTE Management Console
Other Features	Dual ROM architecture NVIDIA-Certified Systems™	Dual ROM architecture NVIDIA-Certified Systems™ - OVX Servers	Dual ROM Architecture NVIDIA-Certified Systems™

GPU Server

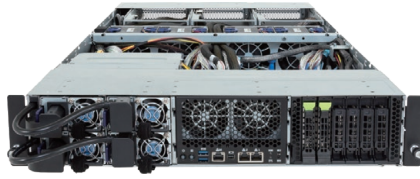


Model	G383-R80-AAP1	G293-Z41 / Z42	G293-Z43-AAP1
Motherboard	MR83-AC0	MZ43-G20	MZ43-G20
Form Factor	3U (W447 x H131 x D950 mm)	2U (W448 x H87.5 x D800 mm)	2U (W448 x H87.5 x D800 mm)
GPU	4 x AMD Instinct™ MI300A APUs - 228 CDNA3 compute units per APU	[G293-Z41-AAP1] Supports 4 x Dual slot Gen5 GPUs [G293-Z42-AAP1] Supports 8 x Dual slot Gen5 GPUs	Supports 16 x Single slot Gen5 GPUs
CPU	24 Zen4 CPU cores per APU TDP up to 550W (CPU + GPU + memory) Peak up to 760W	AMD EPYC™ 9005/9004 series Dual processors, Socket SP5 cTDP up to 240W at ambient 30°C	AMD EPYC™ 9005/9004 series Dual processors, Socket SP5 cTDP up to 240W at ambient 30°C
Chipset	System on Chip	System on Chip	System on Chip
Memory	128GB HBM3 unified memory Memory bandwidth 5.3TB/s	12-Channel DDR5 RDIMM, 24 x DIMMs [EPYC 9005] Up to 6000 MT/s [EPYC 9004] Up to 4800 MT/s	12-Channel DDR5 RDIMM, 24 x DIMMs [EPYC 9005] Up to 6000 MT/s [EPYC 9004] Up to 4800 MT/s
LAN	2 x 10Gb/s LAN 1 x MLAN	2 x 10Gb/s LAN 1 x MLAN	2 x 10Gb/s LAN 1 x MLAN
Storage	Front side: 8 x 2.5" Gen5 NVMe bays Internal M.2: 1 x M.2 (PCIe 5.0 x4)	Front hot-swap: 4 x 2.5" Gen5 NVMe/SATA/SAS4 4 x 2.5" SATA/SAS4 *SAS card is required to support SAS drives	Front hot-swap: 4 x 2.5" Gen5 NVMe/SATA/SAS4 4 x 2.5" SATA/SAS4 *SAS card is required to support SAS drives
Expansion Slots	4 x PCIe 5.0 x16 FHFL (Dual slot) 4 x PCIe 5.0 x16 FHFL (Single slot)	[Z41] 4 x PCIe 5.0 x16 or 8 x PCIe 5.0 x8 FHFL [Z42] 8 x PCIe 5.0 x16 FHFL for GPUs* *with PCIe switches 2 x PCIe 5.0 x16 LP	16 x PCIe 5.0 x16 FHFL for GPUs* *with PCIe switches 2 x PCIe 5.0 x16 LP
I/O Ports	Front: 2 x USB 3.2 Gen1 1 x VGA 2 x RJ45 1 x MLAN Rear: N/A	Front: N/A Rear: 2 x USB 3.2 Gen1 1 x VGA 2 x RJ45 1 x MLAN	Front: N/A Rear: 2 x USB 3.2 Gen1 1 x VGA 2 x RJ45 1 x MLAN
Security	Optional TPM 2.0 module: CTM010	Optional TPM 2.0 module: CTM010	Optional TPM 2.0 module: CTM010
Power Supply	3+1 redundant power supply 3000W 80+ Titanium	Dual redundant power supply 3000W 80+ Titanium	Dual redundant power supply 3000W 80+ Titanium
System Management	ASPEED® AST2600 BMC GIGABYTE Management Console	ASPEED® AST2600 BMC GIGABYTE Management Console	ASPEED® AST2600 BMC GIGABYTE Management Console
Other Features	Dual ROM architecture	Dual ROM architecture [Z42] NVIDIA-Certified Systems™	Dual ROM architecture



Model	G293-Z21 / Z22	G293-Z23-AAM1	G262-Z00
Motherboard	MZ23-G20	MZ23-G20	MZ62-HD5 Rev. 3.0
Form Factor	2U (W448 x H87.5 x D800 mm)	2U (W448 x H87.5 x D800 mm)	2U (W448 x H86.8 x D850 mm)
GPU	[G294-Z21-AAP1] Supports 4 x Dual slot Gen5 GPUs [G294-S22-AAP1] Supports 8 x Dual slot Gen5 GPUs	Supports 4 x Dual slot Gen5 GPUs	AMD Instinct™ MI250 4-GPU
CPU	AMD EPYC™ 9005/9004 series Single processor, Socket SP5 cTDP up to 500W at ambient 25°C	AMD EPYC™ 9005/9004 series Single processor, Socket SP5 cTDP up to 500W at ambient 25°C	AMD EPYC™ 7003 series Dual processors, Socket SP3 cTDP up to 280W
Chipset	System on Chip	System on Chip	System on Chip
Memory	12-Channel DDR5 RDIMM, 12 x DIMMs [EPYC 9005] Up to 6000 MT/s [EPYC 9004] Up to 4800 MT/s	12-Channel DDR5 RDIMM, 12 x DIMMs [EPYC 9005] Up to 6000 MT/s [EPYC 9004] Up to 4800 MT/s	8-Channel DDR4 RDIMM/LRDIMM 16 x DIMM slots Up to 3200/2933 MT/s
LAN	2 x 10Gb/s LAN 1 x MLAN	2 x 10Gb/s LAN 1 x MLAN	2 x 1Gb/s LAN 1 x MLAN
Storage	Front hot-swap: 4 x 2.5" Gen5 NVMe/SATA/SAS4 4 x 2.5" SATA/SAS4 *SAS card is required to support SAS drives Internal M.2: 2 x M.2 (PCIe 5.0 x4)	Front hot-swap: 4 x 2.5" Gen5 NVMe/SATA/SAS4 4 x 2.5" SATA/SAS4 *SAS card is required to support SAS drives Internal M.2: 2 x M.2 (PCIe 5.0 x4)	Front hot-swap: 4 x 2.5" Gen4 NVMe/SATA/SAS *SAS card is required to support SAS drives Internal M.2: 3 x M.2 (PCIe 4.0 x4)
Expansion Slots	[Z21] 4 x PCIe 5.0 x16 or 8 x PCIe 5.0 x8 FHFL [Z22] 8 x PCIe 5.0 x16 FHFL for GPUs* *with PCIe switches 2 x PCIe 5.0 x16 LP	4 x PCIe 5.0 x16 FHFL for GPUs 2 x PCIe 5.0 x16 LP	6 x PCIe 4.0 x16 LP 1 x OCP 3.0 Gen4 x16
I/O Ports	Front: N/A Rear: 2 x USB 3.2 Gen1 1 x VGA 2 x RJ45 1 x MLAN	Front: N/A Rear: 2 x USB 3.2 Gen1 1 x VGA 2 x RJ45 1 x MLAN	Front: 2 x USB 3.2 Gen1 1 x Mini-DP 2 x RJ45 1 x MLAN Rear: N/A
Security	Optional TPM 2.0 module: CTM010	Optional TPM 2.0 module: CTM010	Optional TPM 2.0 module: CTM010
Power Supply	Dual redundant power supply 3000W 80+ Titanium	Dual redundant power supply 2200W 80+ Titanium	Dual redundant power supply 3000W 80+ Platinum
System Management	ASPEED® AST2600 BMC GIGABYTE Management Console	ASPEED® AST2600 BMC GIGABYTE Management Console	ASPEED® AST2500 BMC GIGABYTE Management Console
Other Features	Dual ROM architecture	Dual ROM architecture	AMD Infinity Fabric Links technology

MGX Server



Model	XV23-ZX0-AAJ1	XV23-ZU0-AAJ1
Motherboard	MZX3-MG0	MZU3-MG0
Form Factor	2U (W438 x H87.5 x D900 mm) NVIDIA MGX™ modular server design	2U (W438 x H87.5 x D900 mm) NVIDIA MGX™ modular server design
CPU	AMD EPYC™ 9005/9004 series Dual processors, Socket SP5 cTDP up to 500W at ambient 30°C	AMD EPYC™ 9005/9004 series Single processor, Socket SP5 cTDP up to 500W at ambient 30°C
Chipset	System on Chip	System on Chip
Memory	12-Channel DDR5 RDIMM, 24 x DIMMs [EPYC 9005] Up to 6000 MT/s [EPYC 9004] Up to 4800 MT/s	12-Channel DDR5 RDIMM, 12 x DIMMs [EPYC 9005] Up to 6000 MT/s [EPYC 9004] Up to 4800 MT/s
LAN	2 x 10Gb/s LAN 1 x MLAN	2 x 10Gb/s LAN 1 x MLAN
Storage	Front hot-swap: 6 x 2.5" Gen5 NVMe/SATA/SAS4 *Storage card is required to support SATA/SAS Internal M.2: 2 x M.2 (PCIe 3.0 x2) 1 x M.2 (PCIe 3.0 x1)	Front hot-swap: 2 x 2.5" Gen5 NVMe/SATA/SAS4 *Storage card is required to support SATA/SAS Internal M.2: 2 x M.2 (PCIe 5.0 x4)
Expansion Slots	4 x PCIe 5.0 x16 FHFL for GPUs 3 x PCIe 5.0 x16 FHFL	4 x PCIe 5.0 x16 FHFL for GPUs 3 x PCIe 5.0 x16 FHFL
I/O Ports	Front: 2 x USB 3.2 Gen1 Rear: 2 x USB 3.2 Gen1 1 x Mini-DP 2 x RJ45 1 x MLAN	Front: 2 x USB 3.2 Gen1 1 x Mini-DP 2 x RJ45 1 x MLAN Rear: N/A
Security	Optional TPM 2.0 module: CTM012	Optional TPM 2.0 module: CTM012
Power Supply	2+2 redundant power supply 2000W 80+ Titanium	2+2 redundant power supply 2000W 80+ Titanium
System Management	ASPEED® AST2600 BMC GIGABYTE Management Console	ASPEED® AST2600 BMC GIGABYTE Management Console
Other Features	Dual ROM architecture Optimized for NVIDIA OVX™ L40S Server with 4 GPUs configuration	Dual ROM architecture

Storage Server



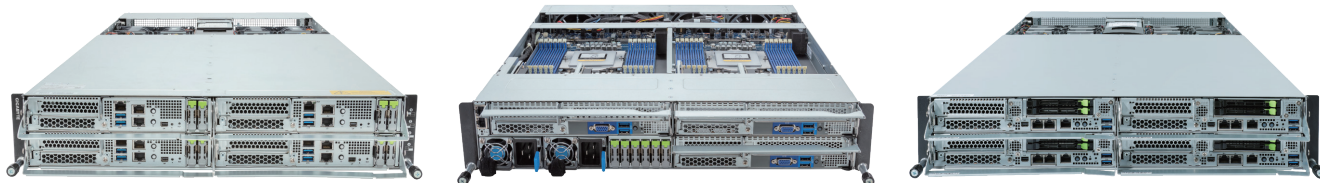
Model	S453-Z30-AAV1	S472-Z30	S252-ZC0
Motherboard	MZ33-AR0	MZ32-AR1	MZC2-CE0
Form Factor	4U (W482.6 x H177 x D625 mm)	4U (W482 x H175 x D696.6 mm)	2U (W438 x H87 x D880 mm)
CPU	AMD EPYC™ 9004 series Single prousor, Socket SP5 cTDP up to 300W at ambient 35°C	AMD EPYC™ 7003/7002 series Single processor, Socket SP3 cTDP up to 280W	AMD EPYC™ 7003/7002 series Dual processors, Socket SP3 cTDP up to 200W
Chipset	System on Chip	System on Chip	System on Chip
Memory	12-Channel DDR5 RDIMM, 24 x DIMMs Up to 4800 MT/s (1DPC), 3600 MT/s(2DPC)	8-Channel DDR4 RDIMM/LRDIMM, 16 x DIMMs Up to 3200MT/s (1DPC), 2933MT/s(2DPC)	8-Channel DDR4 RDIMM/LRDIMM, 16 x DIMMs Up to 3200 MT/s
LAN	2 x 10Gb/s LAN 1 x MLAN	2 x 1Gb/s LAN 1 x MLAN	1 x MLAN
Storage	Front hot-swap: 24 x 3.5/2.5" SATA/SAS Rear hot-swap: 12 x 3.5/2.5" SATA/SAS 2 x 2.5" SATA Broadcom SAS35x48 expander SAS card is required to enable SATA/SAS Default support: 2 x SATA Internal M.2: 1 x M.2 (PCIe 4.0 x4)	Front hot-swap: 12 x 2.5" SATA/SAS 4 x 2.5" Gen4 NVMe/SATA/SAS 8 x 2.5" Gen4 NVMe Right & Left hot-swap: 24 x 3.5" SATA/SAS Rear hot-swap: 2 x 2.5" SATA hot-swap bays Broadcom SAS35x48 expander SAS card is required to enable the drives Default support: 12 x NVMe & 2 x SATA Internal M.2: 2 x M.2 (PCIe 4.0 x4)	Side-accessed hot-swap: 24 x 3.5" SATA/SAS Broadcom SAS35x36R expander SAS card is required to enable the drives Rear hot-swap: 2 x 2.5" Gen4 NVMe/SATA Default support: 2 x Gen4 NVMe/SATA
Expansion Slots	4 x PCIe 5.0 x16 LP	1 x PCIe 4.0 x16 LP 1 x PCIe 4.0 x8 LP 1 x PCIe 3.0 x16 (x16 or x8) LP 1 x PCIe 3.0 x8 (x0 or x8) LP 1 x OCP 2.0 Gen3 x16	6 x PCIe 4.0 x16 LP
I/O Ports	Front: 2 x USB 3.2 Gen1 Rear: 2 x USB 3.2 Gen1, 1 x VGA, 1 x COM, 2 x RJ45, 1 x MLAN	Front: 2 x USB 3.2 Gen1 Rear: 3 x USB 3.2 Gen1, 1 x VGA, 1 x COM, 2 x RJ45, 1 x MLAN	Front: 2 x USB 3.2 Gen1 Rear: 2 x USB 3.2 Gen1, 1 x VGA, 1 x MLAN
Security	Optional TPM 2.0 module: CTM010	Hardware-level root of trust (RoT) Optional TPM 2.0 module: CTM010	Hardware-level root of trust (RoT) Optional TPM 2.0 module: CTM010
Power Supply	Dual redundant power supply 1600W 80+ Titanium	1+1 redundant power supply 1600W 80+ Platinum	1+1 redundant power supply 1300W 80+ Platinum
System Management	ASPEED® AST2600 BMC GIGABYTE Management Console	ASPEED® AST2500 BMC GIGABYTE Management Console	ASPEED® AST2500 BMC GIGABYTE Management Console
Other Features	Onboard 12Gb/s SAS expander	Onboard 12Gb/s SAS expander	Onboard 12Gb/s SAS expander

High Density Server



Model	H273-Z84-AAW1	H273-Z85-AAW1	H233-Z80-AAW1 / AAN1
Motherboard	MZ83-HD2	MZ83-HD2	MZ83-HD0
Form Factor	2U 4 Nodes - Rear access (W440 x H87.5 x D877 mm)	2U 4 Nodes - Rear access (W440 x H87.5 x D877 mm)	2U 2 Nodes - Rear access (W440 x H87.5 x D877 mm)
CPU	AMD EPYC™ 9005/9004 series Dual processors per node 8 x Socket SP5 cTDP up to 240W at ambient 35°C	AMD EPYC™ 9005/9004 series Dual processors per node 8 x Socket SP5 cTDP up to 400W at ambient 25°C	AMD EPYC™ 9005/9004 series Dual processors per node 4 x Socket SP5 cTDP up to 240W at ambient 30°C
Chipset	System on Chip	System on Chip	System on Chip
Memory	12-Channel DDR5 RDIMM, 96 x DIMMs [EPYC 9005] Up to 6000 MT/s [EPYC 9004] Up to 4800 MT/s	12-Channel DDR5 RDIMM, 96 x DIMMs [EPYC 9005] Up to 6000 MT/s [EPYC 9004] Up to 4800 MT/s	12-Channel DDR5 RDIMM, 48 x DIMMs [EPYC 9005] Up to 6000 MT/s [EPYC 9004] Up to 4800 MT/s
LAN	8 x 1Gb/s LAN 4 x MLAN	8 x 1Gb/s LAN 4 x MLAN	4 x 1Gb/s LAN 2 x MLAN
Storage	Front hot-swap: 24 x 2.5" Gen5 NVMe/SATA/SAS4 *SAS card is required to support SAS drives Optional internal M.2: 4 x M.2 (PCIe 4.0 x4)	Front hot-swap: 8 x 2.5" Gen5 NVMe/SATA/SAS4 *SAS card is required to support SAS drives Optional internal M.2: 4 x M.2 (PCIe 4.0 x4)	Front hot-swap: 4 x 2.5" Gen4 NVMe
Expansion Slots	8 x PCIe 5.0 x16 LP 4 x OCP 3.0 Gen5 x16	4 x PCIe 5.0 x16 LP	4 x PCIe 5.0 x16 FHFL for GPUs 2 x PCIe 5.0 x16 LP 2 x OCP 3.0 Gen5 x16
I/O Ports	8 x USB 3.2 Gen1 4 x Mini-DP 8 x RJ45 4 x MLAN	8 x USB 3.2 Gen1 4 x Mini-DP 8 x RJ45 4 x MLAN	4 x USB 3.2 Gen1 2 x Mini-DP 4 x RJ45 1 x MLAN
Security	Optional TPM 2.0 module: CTM010	Optional TPM 2.0 module: CTM010	Optional TPM 2.0 module: CTM010
Power Supply	Dual redundant power supply 3000W 80+ Titanium	Dual redundant power supply 3000W 80+ Titanium	Dual redundant power supply [AAW1] 3000W 80+ Titanium [AAN1] 2600W 80+ Titanium
System Management	ASPEED® AST2600 BMC ASPEED® AST2520 CMC GIGABYTE Management Console	ASPEED® AST2600 BMC ASPEED® AST2520 CMC GIGABYTE Management Console	ASPEED® AST2600 BMC ASPEED® AST2520 CMC GIGABYTE Management Console
Other Features	Dual ROM architecture Multiplexing management topology	Dual ROM architecture Multiplexing management topology	Dual ROM architecture Multiplexing management topology Supports up to 4 x Dual slot Gen5 GPUs

High Density Server

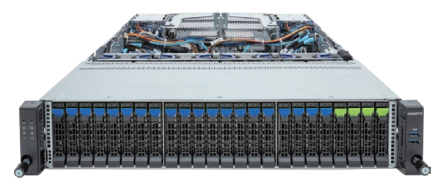
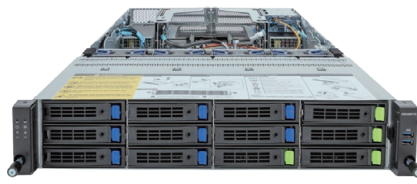
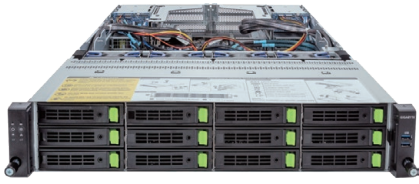


Model	H253-Z10-AAP1	H223-Z10-AAP1	H282-ZC0
Motherboard	MZ13-SH0	MZ13-HD0	MZC2-LM0
Form Factor	2U 4 Nodes - Front access (W447 x H86.8 x D902 mm)	2U 3 Nodes - Front access (W447.8 x H87.50 x D500mm)	2U 4 Nodes - Front access (W447 x H86.8 x D902 mm)
CPU	AMD EPYC™ 9005/9004 series Single processor per node 4 x Socket SP5 cTDP up to 400W at ambient 30°C	AMD EPYC™ 9005/9004 series Single processor per node 3 x Socket SP5 cTDP up to 300W at ambient 30°C	AMD EPYC™ 7003 series Dual processors per node 8 x Socket SP3 CPU 200W, fully support at ambient 35°C
Chipset	System on Chip	System on Chip	System on Chip
Memory	12-Channel DDR5 RDIMM, 96 x DIMMs [EPYC 9005] Up to 5200 MT/s (1DPC) ^[1] [EPYC 9004] Up to 4800 MT/s (1DPC) ^[2]	12-Channel DDR5 RDIMM, 36 x DIMMs [EPYC 9005] Up to 6000 MT/s [EPYC 9004] Up to 4800 MT/s	8-Channel DDR4 RDIMM/LRDIMM, 128 x DIMMs Up to 3200/2933 MT/s (2DPC)
LAN	8 x 1Gb/s LAN 4 x MLAN 2 x CMC	2 x CMC MLAN	8 x 1Gb/s LAN 4 x MLAN 2 x CMC
Storage	Front hot-swap: 8 x 9.5mm E1.S Gen4 NVMe Internal M.2: 4 x M.2 (PCIe 5.0 x4) 8 x M.2 (SATA 3.0)	Front hot-swap: 6 x 9.5mm E1.S Gen4 NVMe Optional internal M.2: 3 x M.2 (PCIe 4.0 x4)	Front hot-swap: 8 x 7mm slim type Gen4 NVMe/SATA Internal M.2: 8 x M.2 (PCIe 4.0 x4)
Expansion Slots	4 x PCIe 5.0 x16 LP 4 x OCP 3.0 Gen5 x16	4 x PCIe 5.0 x16 FHHL 4 x PCIe 5.0 x16 LP 4 x OCP 3.0 Gen5 x16	8 x PCIe 4.0 x16 FHHL 4 x PCIe 4.0 x16 LP 4 x OCP 3.0 Gen4 x16
I/O Ports	8 x USB 3.2 Gen1 4 x Mini-DP 8 x RJ45 4 x MLAN 2 x CMC	6 x USB 3.2 Gen1 6 x VGA 2 x CMC MLAN	8 x USB 3.2 Gen1 4 x Mini-DP 8 x RJ45 4 x MLAN 2 x CMC
Security	Optional TPM 2.0 module: CTM010	Optional TPM 2.0 module: CTM010	Optional TPM 2.0 module: CTM010
Power Supply	Dual redundant power supply 3000W 80+ Titanium	Dual redundant power supply 3000W 80+ Titanium	Dual redundant power supply 3200W 80+ Platinum
System Management	ASPEED® AST2600 BMC ASPEED® AST2520 CMC GIGABYTE Management Console	ASPEED® AST2600 BMC ASPEED® AST2520 CMC GIGABYTE Management Console	ASPEED® AST2500 BMC ASPEED® AST2520 CMC GIGABYTE Management Console
Other Features	Dual ROM architecture Ring Topology Management	Dual ROM architecture Ring Topology Management	Hardware-level root of trust Ring Topology Management

^[1] AMD EPYC™ 9005 series CPU: Up to 5200 MT/s (1DPC), 4400 MT/s (1R 2DPC), 4000 MT/s (2R 2DPC)

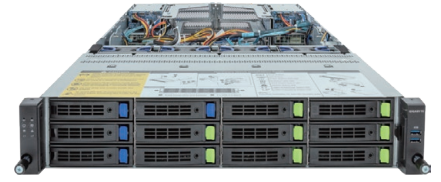
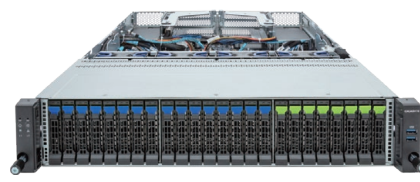
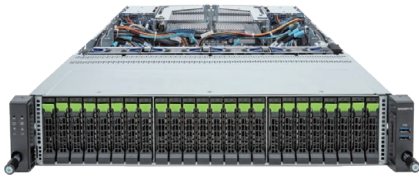
^[2] AMD EPYC™ 9004 series CPU: Up to 4800 MT/s (1DPC), 3600 MT/s (2DPC)

Rack Server



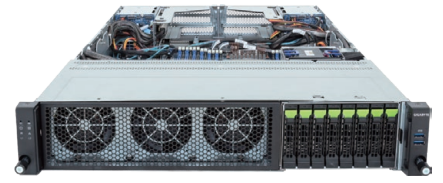
Model	R283-Z94-AAD* / AAV*	R283-Z95-AAD1 / AAV1	R283-Z96-AAE2 / AAJ2
Motherboard	MZ93-FS1	MZ93-FS1	MZ93-FS1
Form Factor	2U (W438 x H87 x D815 mm)	2U (W438 x H87 x D815 mm)	2U (W438 x H87 x D815 mm)
CPU	AMD EPYC™ 9005/9004 series Dual processors, Socket SP5 cTDP up to 500W with optional heatsink	AMD EPYC™ 9005/9004 series Dual processors, Socket SP5 cTDP up to 500W with optional heatsink	AMD EPYC™ 9005/9004 series Dual processors, Socket SP5 cTDP up to 500W with optional heatsink
Chipset	System on Chip	System on Chip	System on Chip
Memory	12-Channel DDR5 RDIMM, 24 x DIMMs [EPYC 9005] Up to 6000 MT/s [EPYC 9004] Up to 4800 MT/s	12-Channel DDR5 RDIMM, 24 x DIMMs [EPYC 9005] Up to 6000 MT/s [EPYC 9004] Up to 4800 MT/s	12-Channel DDR5 RDIMM, 24 x DIMMs [EPYC 9005] Up to 6000 MT/s [EPYC 9004] Up to 4800 MT/s
LAN	2 x 1Gb/s LAN 1 x MLAN	2 x 1Gb/s LAN 1 x MLAN	2 x 1Gb/s LAN 1 x MLAN
Storage	Front 3.5"/2.5" hot-swap: [AAD1/AAV1] 12 x Gen5 NVMe/SATA/SAS4 [AAD2/AAV2] 4 x Gen5 NVMe/SATA/SAS4 + 8 x SATA/SAS4 Rear hot-swap: [AAD1/AAV1] 4 x 2.5" SATA/SAS4 [AAD2/AAV2] 2 x 2.5" SATA/SAS4 *SAS card is required to support SAS drives Internal M.2: 2 x M.2 (PCIe 3.0 x4) 1 x M.2 (PCIe 3.0 x2)	Front hot-swap: 4 x 3.5"/2.5" Gen5 NVMe/SATA/SAS4 8 x 3.5"/2.5" SATA/SAS4 Rear hot-swap: 2 x 2.5" SATA/SAS4 *Broadcom SAS4 expander SAS card is required to enable SATA/SAS4 Internal M.2: 2 x M.2 (PCIe 3.0 x4) 1 x M.2 (PCIe 3.0 x2)	Front hot-swap: 20 x 2.5" SATA/SAS4 4 x 2.5" Gen5 NVMe/SATA/SAS4 Rear hot-swap: 4 x 2.5" SATA/SAS4 *Broadcom SAS4 expander SAS card is required to enable SATA/SAS4 Internal M.2: 2 x M.2 (PCIe 3.0 x4) 1 x M.2 (PCIe 3.0 x2)
Expansion Slots	[AAD1/AAV1] 2 x PCIe 5.0 x16 FHHL 2 x OCP 3.0 Gen5 x16 [AAD2/AAV2] 4 x PCIe 5.0 x16 FHHL 2 x OCP 3.0 Gen5 x16	5 x PCIe 5.0 x16 FHHL 2 x OCP 3.0 Gen5 x16	4 x PCIe 5.0 x16 FHHL 2 x OCP 3.0 Gen5 x16
I/O Ports	Front: 2 x USB 3.2 Gen1 Rear: 2 x USB 3.2 Gen1 1 x Mini-DP 2 x RJ45 1 x MLAN	Front: 2 x USB 3.2 Gen1 Rear: 2 x USB 3.2 Gen1 1 x Mini-DP 2 x RJ45 1 x MLAN	Front: 2 x USB 3.2 Gen1 Rear: 2 x USB 3.2 Gen1 1 x Mini-DP 2 x RJ45 1 x MLAN
Security	Optional TPM 2.0 module: CTM010	Optional TPM 2.0 module: CTM010	Optional TPM 2.0 module: CTM010
Power Supply	Dual redundant power supply [AAD*] 1600W 80+ Platinum [AAV*] 1600W 80+ Titanium	Dual redundant power supply [AAD1] 1600W 80+ Platinum [AAV1] 1600W 80+ Titanium	Dual redundant power supply [AAE2] 2000W 80+ Platinum [AAJ2] 2000W 80+ Titanium
System Management	ASPEED® AST2600 BMC GIGABYTE Management Console	ASPEED® AST2600 BMC GIGABYTE Management Console	ASPEED® AST2600 BMC GIGABYTE Management Console
Other Features	Dual ROM architecture	Dual ROM architecture Onboard 24Gb/s SAS expander	Dual ROM architecture Onboard 24Gb/s SAS expander

Rack Server



Model	R283-Z96-AAE1 / AAJ1	R283-Z96-AAE3 / AAJ3	R283-Z97-AAF1/AAL1
Motherboard	MZ93-FS1	MZ93-FS1	MZ93-FS1
Form Factor	2U (W438 x H87 x D815 mm)	2U (W438 x H87 x D815 mm)	2U (W438 x H87 x D815 mm)
CPU	AMD EPYC™ 9005/9004 series Dual processors, Socket SP5 cTDP up to 500W with optional heatsink	AMD EPYC™ 9005/9004 series Dual processors, Socket SP5 cTDP up to 500W with optional heatsink	AMD EPYC™ 9005/9004 series Dual processors, Socket SP5 cTDP up to 240W at ambient 25°C
Chipset	System on Chip	System on Chip	System on Chip
Memory	12-Channel DDR5 RDIMM, 24 x DIMMs [EPYC 9005] Up to 6000 MT/s [EPYC 9004] Up to 4800 MT/s	12-Channel DDR5 RDIMM, 24 x DIMMs [EPYC 9005] Up to 6000 MT/s [EPYC 9004] Up to 4800 MT/s	12-Channel DDR5 RDIMM, 24 x DIMMs [EPYC 9005] Up to 6000 MT/s [EPYC 9004] Up to 4800 MT/s
LAN	2 x 1Gb/s LAN 1 x MLAN	2 x 1Gb/s LAN 1 x MLAN	2 x 1Gb/s LAN 1 x MLAN
Storage	Front hot-swap: 24 x 2.5" Gen5 NVMe Rear hot-swap: 4 x 2.5" SATA/SAS4 *SAS card is required to support SAS drives Internal M.2: 1 x M.2 (PCIe 3.0 x4) 1 x M.2 (PCIe 3.0 x2)	Front hot-swap: 8 x 2.5" Gen5 NVMe 16 x 2.5" SATA/SAS4 *SAS card is required to support SAS drives Internal M.2: 2 x M.2 (PCIe 3.0 x4) 1 x M.2 (PCIe 3.0 x2)	Front hot-swap: 8 x 3.5"/2.5" Gen5 NVMe/SATA/SAS4 4 x 3.5"/2.5" SATA/SAS4 Rear hot-swap: 4 x 2.5" SATA/SAS4 *SAS card is required to support SAS drives
Expansion Slots	1 x PCIe 5.0 x16 FHHL 1 x OCP 3.0 Gen5 x16	3 x PCIe 5.0 x16 FHHL 2 x OCP 3.0 Gen5 x16	2 x PCIe 5.0 x16 FHHL for GPUs 2 x PCIe 5.0 x16 FHHL 2 x OCP 3.0 Gen5 x16
I/O Ports	Front: 2 x USB 3.2 Gen1 Rear: 2 x USB 3.2 Gen1 1 x Mini-DP 2 x RJ45 1 x MLAN	Front: 2 x USB 3.2 Gen1 Rear: 2 x USB 3.2 Gen1 1 x Mini-DP 2 x RJ45 1 x MLAN	Front: 2 x USB 3.2 Gen1 Rear: 2 x USB 3.2 Gen1 1 x Mini-DP 2 x RJ45 1 x MLAN
Security	Optional TPM 2.0 module: CTM010	Optional TPM 2.0 module: CTM010	Optional TPM 2.0 module: CTM010
Power Supply	Dual redundant power supply [AAE1] 2000W 80+ Platinum [AAJ1] 2000W 80+ Titanium	Dual redundant power supply [AAE3] 2000W 80+ Platinum [AAJ3] 2000W 80+ Titanium	Dual redundant power supply [AAF1] 2400W 80+ Platinum [AAL1] 2700W 80+ Titanium
System Management	ASPEED® AST2600 BMC GIGABYTE Management Console	ASPEED® AST2600 BMC GIGABYTE Management Console	ASPEED® AST2600 BMC GIGABYTE Management Console
Other Features	Dual ROM architecture	Dual ROM architecture	Dual ROM architecture Supports up to 2 x Dual slot Gen5 GPUs

Rack Server



Model	R283-ZF0-AAL1	R283-ZF1-AAL1	R283-ZK0-AAL1
Motherboard	MZF3-GP0	MZF3-GP0	MZK3-LM0
Form Factor	2U (W438 x H87.5 x D815 mm)	2U (W438 x H87.5 x D815 mm)	2U (W438 x H87.5 x D815 mm)
CPU	AMD EPYC™ 9005/9004 series Dual processors, Socket SP5 cTDP up to 500W at ambient 30°C	AMD EPYC™ 9005/9004 series Dual processors, Socket SP5 cTDP up to 500W at ambient 30°C	AMD EPYC™ 9005/9004 series Dual processors, Socket SP5 cTDP up to 500W
Chipset	System on Chip	System on Chip	System on Chip
Memory	12-Channel DDR5 RDIMM, 24 x DIMMs [EPYC 9005] Up to 6000 MT/s [EPYC 9004] Up to 4800 MT/s	12-Channel DDR5 RDIMM, 24 x DIMMs [EPYC 9005] Up to 6000 MT/s [EPYC 9004] Up to 4800 MT/s	12-Channel DDR5 RDIMM, 48 x DIMMs [EPYC 9005] Up to 5200 MT/s (1DPC) ^[1] [EPYC 9004] Up to 4800 MT/s (1DPC) ^[2]
LAN	1 x MLAN	1 x MLAN	2 x 1Gb/s LAN 1 x MLAN
Storage	Front hot-swap: 8 x 3.5"/2.5" Gen5 NVMe/SATA/SAS4 4 x 3.5"/2.5" SATA/SAS4 *SAS card is required to support SAS drives	Front hot-swap: 4 x 2.5" Gen5 NVMe/SATA/SAS4 4 x 2.5" Gen5 NVMe 8 x 2.5" SATA/SAS4 *SAS card is required to support SAS drives	Front hot-swap: 8 x 2.5" Gen5 NVMe/SATA/SAS4 *Storage card is required to support SATA /SAS Rear hot-swap: 4 x 2.5" SATA/SAS4 *SAS card is required to support SAS drives Internal M.2: 1 x M.2 (PCIe 3.0 x4) 1 x M.2 (PCIe 3.0 x2)
Expansion Slots	4 x PCIe 5.0 x16 FHFL for GPUs 1 x PCIe 5.0 x16 FHHL 1 x OCP 3.0 Gen5 x16	4 x PCIe 5.0 x16 FHFL for GPUs 1 x PCIe 5.0 x16 FHHL 1 x OCP 3.0 Gen5 x16	4 x PCIe 5.0 x16 FHHL 2 x OCP 3.0 Gen5 x16
I/O Ports	Front: 2 x USB 3.2 Gen1 Rear: 2 x USB 3.2 Gen1 1 x Mini-DP 1 x MLAN	Front: 2 x USB 3.2 Gen1 Rear: 2 x USB 3.2 Gen1 1 x Mini-DP 1 x MLAN	Front: 2 x USB 3.2 Gen1 Rear: 2 x USB 3.2 Gen1 1 x Mini-DP 2 x RJ45 1 x MLAN
Security	Optional TPM 2.0 module: CTM010	Optional TPM 2.0 module: CTM010	Optional TPM 2.0 module: CTM012
Power Supply	Dual redundant power supply 2700W 80+ Titanium	Dual redundant power supply 2700W 80+ Titanium	1+1 redundant power supply 2700W 80+ Titanium
System Management	ASPEED® AST2600 BMC GIGABYTE Management Console	ASPEED® AST2600 BMC GIGABYTE Management Console	ASPEED® AST2600 BMC GIGABYTE Management Console
Other Features	Dual ROM architecture Supports up to 4 x Dual slot Gen5 GPUs	Dual ROM architecture Supports up to 4 x Dual slot Gen5 GPUs	Dual ROM architecture

^[1] AMD EPYC™ 9005 series CPU: Up to 5200 MT/s (1DPC), 4400 MT/s (1R 2DPC), 4000 MT/s (2R 2DPC)

^[2] AMD EPYC™ 9004 series CPU: Up to 4800 MT/s (1DPC), 3600 MT/s (2DPC)

Rack Server



Model	R183-ZF0-AAJ1	R183-ZF1-AAJ1	R183-Z93-AAD1 / AAV1
Motherboard	MZF3-GP0	MZF3-GP0	MZ93-FS1
Form Factor	1U (W438 x H43.5 x D815 mm)	1U (W438 x H43.5 x D815 mm)	1U (W438 x H43.5x D815 mm)
CPU	AMD EPYC™ 9005/9004 series Dual processors, Socket SP5 cTDP up to 400W at ambient 30°C	AMD EPYC™ 9005/9004 series Dual processors, Socket SP5 cTDP up to 400W at ambient 30°C	AMD EPYC™ 9005/9004 series Dual processors, Socket SP5 cTDP up to 400W at ambient 30°C
Chipset	System on Chip	System on Chip	System on Chip
Memory	12-Channel DDR5 RDIMM, 24 x DIMMs [EPYC 9005] Up to 6000 MT/s [EPYC 9004] Up to 4800 MT/s	12-Channel DDR5 RDIMM, 24 x DIMMs [EPYC 9005] Up to 6000 MT/s [EPYC 9004] Up to 4800 MT/s	12-Channel DDR5 RDIMM, 24 x DIMMs [EPYC 9005] Up to 6000 MT/s [EPYC 9004] Up to 4800 MT/s
LAN	1 x MLAN	1 x MLAN	2 x 1Gb/s LAN 1 x MLAN
Storage	Front hot-swap: 4 x 3.5"/2.5" Gen5 NVMe/SATA/SAS4 *SAS card is required to support SAS drives Internal M.2: 1 x M.2 (PCIe 3.0 x4)	Front hot-swap: 12 x 2.5" Gen5 NVMe/SATA/SAS4 *SAS card is required to support SAS drives	Front hot-swap: 4 x 3.5"/2.5" Gen5 NVMe/SATA/SAS4 *SAS card is required to support SAS drives Internal M.2: 2 x M.2 (PCIe 3.0 x4) 1 x M.2 (PCIe 3.0 x2)
Expansion Slots	1 x PCIe 5.0 x16 FHFL for GPU 1 x PCIe 5.0 x16 FHFL 1 x PCIe 5.0 x16 FHHL 1 x OCP 3.0 Gen5 x16	1 x PCIe 5.0 x16 FHFL for GPU 1 x PCIe 5.0 x16 FHFL 1 x PCIe 5.0 x16 FHHL 1 x OCP 3.0 Gen5 x16	2 x PCIe 5.0 x16 FHHL 2 x OCP 3.0 Gen5 x16
I/O Ports	Front: 2 x USB 3.2 Gen1 Rear: 2 x USB 3.2 Gen1 1 x Mini-DP 1 x MLAN	Front: 1 x USB 3.2 Gen1 Rear: 2 x USB 3.2 Gen1 1 x Mini-DP 1 x MLAN	Front: 2 x USB 3.2 Gen1 Rear: 2 x USB 3.2 Gen1 1 x Mini-DP 2 x RJ45 1 x MLAN
Security	Optional TPM 2.0 module: CTM010	Optional TPM 2.0 module: CTM010	Optional TPM 2.0 module: CTM010
Power Supply	1+1 redundant power supply 2000W 80+ Titanium	1+1 redundant power supply 2000W 80+ Titanium	Dual redundant power supply [AAD1] 1600W 80+ Platinum [AAV1] 1600W 80+ Titanium
System Management	ASPEED® AST2600 BMC GIGABYTE Management Console	ASPEED AST2600 BMC GIGABYTE Management Console	ASPEED® AST2600 BMC GIGABYTE Management Console
Other Features	Dual ROM architecture Supports 1 x Dual slot Gen5 GPU	Dual ROM architecture Supports 1 x Dual slot Gen5 GPU	Dual ROM architecture

Rack Server



Model	R183-Z94-AAD* / AAV*	R183-Z95-AAD1 / AAV1	R183-Z96-AAD1 / AAV1
Motherboard	MZ93-FS1	MZ93-FS1	MZ93-FS1
Form Factor	1U (W438 x H43.5x D815 mm)	1U (W438 x H43.5x D815 mm)	1U (W438 x H43.5x D815 mm)
CPU	AMD EPYC™ 9005/9004 series Dual processors, Socket SP5 OCP NIC 3.0 ≤ 21W at 30°C ambient, cTDP up to 400W	AMD EPYC™ 9005/9004 series Dual processors, Socket SP5 OCP NIC 3.0 ≤ 21W at 30°C ambient, cTDP up to 400W	AMD EPYC™ 9005/9004 series Dual processors, Socket SP5 OCP NIC 3.0 ≤ 21W at 30°C ambient, cTDP up to 400W
Chipset	System on Chip	System on Chip	System on Chip
Memory	12-Channel DDR5 RDIMM, 24 x DIMMs [EPYC 9005] Up to 6000 MT/s [EPYC 9004] Up to 4800 MT/s	12-Channel DDR5 RDIMM, 24 x DIMMs [EPYC 9005] Up to 6000 MT/s [EPYC 9004] Up to 4800 MT/s	12-Channel DDR5 RDIMM, 24 x DIMMs [EPYC 9005] Up to 6000 MT/s [EPYC 9004] Up to 4800 MT/s
LAN	2 x 1Gb/s LAN 1 x MLAN	2 x 1Gb/s LAN 1 x MLAN	2 x 1Gb/s LAN 1 x MLAN
Storage	Front 2.5" hot-swap: [AAD1/AAV1] 12 x Gen5 NVMe/SATA/SAS4 [AAD2/AAV2] 4 x Gen5 NVMe/SATA/SAS4 + 8 x SATA/SAS4 *SAS card is required to support SAS drives Internal M.2: 2 x M.2 (PCIe 3.0 x4) 1 x M.2 (PCIe 3.0 x2)	Front hot-swap: 6 x 9.5mm E1.S NVMe 8 x 2.5" Gen5 NVMe/SATA/SAS4 *SAS card is required to support SAS drives Internal M.2: 2 x M.2 (PCIe 3.0 x4) 1 x M.2 (PCIe 3.0 x2)	Front hot-swap: 4 x 3.5"/2.5" Gen5 NVMe/SATA/SAS4 4 x 2.5" 9.5mm Gen5 NVMe/SATA/SAS4 *SAS card is required to support SAS drives Internal M.2: 2 x M.2 (PCIe 3.0 x4) 1 x M.2 (PCIe 3.0 x2)
Expansion Slots	2 x PCIe 5.0 x16 FHHL 2 x OCP 3.0 Gen5 x16	2 x PCIe 5.0 x16 FHHL 2 x OCP 3.0 Gen5 x16	2 x PCIe 5.0 x16 FHHL 2 x OCP 3.0 Gen5 x16
I/O Ports	Front: 1 x USB 3.2 Gen1 Rear: 2 x USB 3.2 Gen1 1 x Mini-DP 2 x RJ45 1 x MLAN	Front: 1 x USB 3.2 Gen1 Rear: 2 x USB 3.2 Gen1 1 x Mini-DP 2 x RJ45 1 x MLAN	Front: 1 x USB 3.2 Gen1 Rear: 2 x USB 3.2 Gen1 1 x Mini-DP 2 x RJ45 1 x MLAN
Security	Optional TPM 2.0 module: CTM010	Optional TPM 2.0 module: CTM010	Optional TPM 2.0 module: CTM010
Power Supply	Dual redundant power supply [AAD*] 1600W 80+ Platinum [AAV*] 1600W 80+ Titanium	Dual redundant power supply [AAD1] 1600W 80+ Platinum [AAV1] 1600W 80+ Titanium	Dual redundant power supply [AAD1] 1600W 80+ Platinum [AAV1] 1600W 80+ Titanium
System Management	ASPEED® AST2600 BMC GIGABYTE Management Console	ASPEED® AST2600 BMC GIGABYTE Management Console	ASPEED® AST2600 BMC GIGABYTE Management Console
Other Features	Dual ROM architecture	Dual ROM architecture	Dual ROM architecture

Rack Server



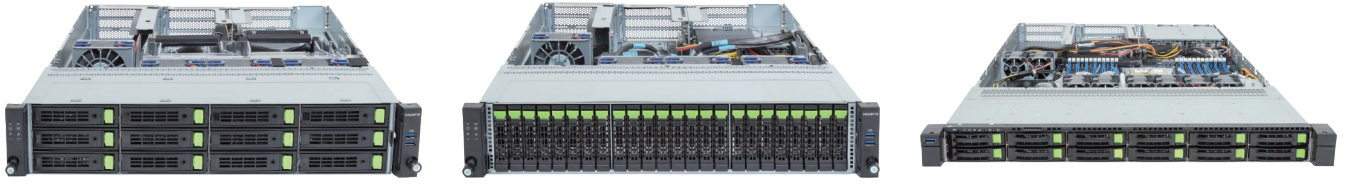
Model	R263-Z34-AAC1 / AAH1	R263-Z36-AAE1 / AAJ1	R263-Z37-AAC1 / AAH1
Motherboard	MZ33-DC1	MZ33-DC1	MZ33-DC1
Form Factor	2U (W438 x H87.5x D710 mm)	2U (W438 x H87.5x D710 mm)	2U (W438 x H87.5x D710 mm)
CPU	AMD EPYC™ 9005/9004 series Single processor, Socket SP5 cTDP up to 500W with optional heatsink at 30°C ambient	AMD EPYC™ 9005/9004 series Single processor, Socket SP5 cTDP up to 500W with optional heatsink at 30°C ambient	AMD EPYC™ 9005/9004 series Single processor, Socket SP5 cTDP up to 500W with optional heatsink at 30°C ambient
Chipset	System on Chip	System on Chip	System on Chip
Memory	12-Channel DDR5 RDIMM, 12 x DIMMs [EPYC 9005] Up to 6000 MT/s [EPYC 9004] Up to 4800 MT/s	12-Channel DDR5 RDIMM, 12 x DIMMs [EPYC 9005] Up to 6000 MT/s [EPYC 9004] Up to 4800 MT/s	12-Channel DDR5 RDIMM, 12 x DIMMs [EPYC 9005] Up to 6000 MT/s [EPYC 9004] Up to 4800 MT/s
LAN	1 x 1Gb/s LAN 1 x MLAN	1 x 1Gb/s LAN 1 x MLAN	1 x 1Gb/s LAN 1 x MLAN
Storage	Front hot-swap: 4 x 3.5"/2.5" Gen5 NVMe/SATA/SAS4 8 x 3.5"/2.5" SATA/SAS4 *SAS card is required to support SAS drives Internal M.2: 1 x M.2 (PCIe 3.0 x4)	Front hot-swap: 24 x 2.5" Gen5 NVMe *NVMe supported only Internal M.2: 1 x M.2 (PCIe 3.0 x4)	Front hot-swap: 4 x 3.5"/2.5" Gen5 NVMe/SATA/SAS4 *Storage card is required to support SATA /SAS 8 x 3.5"/2.5" SATA/SAS4 *SAS card is required to support SAS drives Rear hot-swap: 2 x 2.5" Gen5 NVMe Internal M.2: 1 x M.2 (PCIe 3.0 x4)
Expansion Slots	4 x PCIe 5.0 x16 FHHL 2 x OCP 3.0 Gen5 x16	1 x PCIe 5.0 x16 FHHL 1 x OCP 3.0 Gen5 x16	4 x PCIe 5.0 x16 FHHL 2 x OCP 3.0 Gen5 x16
I/O Ports	Front: 2 x USB 3.2 Gen1 Rear: 2 x USB 3.2 Gen1 1 x Mini-DP 1 x RJ45 1 x MLAN	Front: 2 x USB 3.2 Gen1 Rear: 2 x USB 3.2 Gen1 1 x Mini-DP 1 x RJ45 1 x MLAN	Front: 2 x USB 3.2 Gen1 Rear: 2 x USB 3.2 Gen1 1 x Mini-DP 1 x RJ45 1 x MLAN
Security	Optional TPM 2.0 module: CTM012	Optional TPM 2.0 module: CTM012	Optional TPM 2.0 module: CTM012
Power Supply	Dual redundant power supply [AAC1] 1300W 80+ Platinum [AAH1] 1300W 80+ Titanium	Dual redundant power supply [AAE1] 2000W 80+ Platinum [AAJ1] 2000W 80+ Titanium	Dual redundant power supply [AAC1] 1300W 80+ Platinum [AAH1] 1300W 80+ Titanium
System Management	ASPEED® AST2600 BMC GIGABYTE Management Console	ASPEED® AST2600 BMC GIGABYTE Management Console	ASPEED® AST2600 BMC GIGABYTE Management Console
Other Features	Dual ROM architecture	Dual ROM architecture	Dual ROM architecture

Rack Server



Model	R263-Z38-AAL1	R163-Z34-AAH1	R163-Z35-AAC1 / AAH1
Motherboard	MZ33-DC1	MZ33-DC1	MZ33-DC1
Form Factor	2U (W438 x H87.5x D710 mm)	1U (W438 x H43.5x D710 mm)	1U (W438 x H43.5x D710 mm)
CPU	AMD EPYC™ 9005/9004 series Single processor, Socket SP5 cTDP up to 500W at 25°C ambient	AMD EPYC™ 9005/9004 series Single processor, Socket SP5 cTDP up to 500W at 25°C ambient	AMD EPYC™ 9005/9004 series Single processor, Socket SP5 cTDP up to 500W at 25°C ambient
Chipset	System on Chip	System on Chip	System on Chip
Memory	12-Channel DDR5 RDIMM, 12 x DIMMs [EPYC 9005] Up to 6000 MT/s [EPYC 9004] Up to 4800 MT/s	12-Channel DDR5 RDIMM, 12 x DIMMs [EPYC 9005] Up to 6000 MT/s [EPYC 9004] Up to 4800 MT/s	12-Channel DDR5 RDIMM, 12 x DIMMs [EPYC 9005] Up to 6000 MT/s [EPYC 9004] Up to 4800 MT/s
LAN	1 x 1Gb/s LAN 1 x MLAN	1 x 1Gb/s LAN 1 x MLAN	1 x 1Gb/s LAN 1 x MLAN
Storage	Front hot-swap: 8 x 3.5"/2.5" Gen5 NVMe/SATA/SAS4 4 x 3.5"/2.5" SATA/SAS4 *SAS card is required to support SAS drives Internal M.2: 1 x M.2 (PCIe 3.0 x4)	Front hot-swap: 4 x 3.5"/2.5" Gen5 NVMe/SATA/SAS4 *SAS card is required to support SAS drives Internal M.2: 1 x M.2 (PCIe 3.0 x4)	Front hot-swap: 12 x 2.5" Gen5 NVMe/SATA/SAS4 *SAS card is required to support SAS drives Internal M.2: 1 x M.2 (PCIe 3.0 x4)
Expansion Slots	3 x PCIe 5.0 x16 FHFL for GPUs 2 x OCP 3.0 Gen5 x16	2 x PCIe 5.0 x16 FHHL 2 x OCP 3.0 Gen5 x16	2 x PCIe 5.0 x16 FHHL 2 x OCP 3.0 Gen5 x16
I/O Ports	Front: 2 x USB 3.2 Gen1 Rear: 2 x USB 3.2 Gen1 1 x Mini-DP 1 x RJ45 1 x MLAN	Front: 2 x USB 3.2 Gen1 Rear: 2 x USB 3.2 Gen1 1 x Mini-DP 1 x RJ45 1 x MLAN	Front: 1 x USB 3.2 Gen1 Rear: 2 x USB 3.2 Gen1 1 x Mini-DP 1 x RJ45 1 x MLAN
Security	Optional TPM 2.0 module: CTM012	Optional TPM 2.0 module: CTM012	Optional TPM 2.0 module: CTM012
Power Supply	Dual redundant power supply 2700W 80+ Titanium	Dual redundant power supply 1300W 80+ Titanium	Dual redundant power supply [AAC1] 1300W 80+ Platinum [AAH1] 1300W 80+ Titanium
System Management	ASPEED® AST2600 BMC GIGABYTE Management Console	ASPEED® AST2600 BMC GIGABYTE Management Console	ASPEED® AST2600 BMC GIGABYTE Management Console
Other Features	Dual ROM architecture Supports up to 3 x Dual slot Gen5 GPUs	Dual ROM architecture	Dual ROM architecture

Rack Server



Model	R263-ZG0-AAL2	R263-ZG2-AAJ3	R163-ZG2-AAJ2
Motherboard	MZG3-GU0	MZG3-GU0	MZG3-GU0
Form Factor	2U (W438 x H87.5x D815 mm)	2U (W438 x H87.5x D815 mm)	1U (W438 x H43.5x D815 mm)
CPU	AMD EPYC™ 9005/9004 series Single processor, Socket SP5 cTDP up to 500W at 25°C ambient	AMD EPYC™ 9005/9004 series Single processor, Socket SP5 cTDP up to 500W at 30°C ambient	AMD EPYC™ 9005/9004 series Single processor, Socket SP5 cTDP up to 500W at 25°C ambient
Chipset	System on Chip	System on Chip	System on Chip
Memory	12-Channel DDR5 RDIMM, 24 x DIMMs [EPYC 9005] Up to 5200 MT/s (1DPC) ^[1] [EPYC 9004] Up to 4800 MT/s (1DPC) ^[2]	12-Channel DDR5 RDIMM, 24 x DIMMs [EPYC 9005] Up to 5200 MT/s (1DPC) ^[1] [EPYC 9004] Up to 4800 MT/s (1DPC) ^[2]	12-Channel DDR5 RDIMM, 24 x DIMMs [EPYC 9005] Up to 5200 MT/s (1DPC) ^[1] [EPYC 9004] Up to 4800 MT/s (1DPC) ^[2]
LAN	1 x MLAN	1 x MLAN	1 x MLAN
Storage	Front hot-swap: 12 x 3.5"/2.5" Gen5 NVMe/SATA/SAS4 *Storage card is required to support SATA/SAS Internal M.2: 2 x M.2 (PCIe 3.0 x2)	Front hot-swap: 24 x 2.5" Gen5 NVMe/SATA/SAS4 *Storage card is required to support SATA/SAS Internal M.2: 2 x M.2 (PCIe 3.0 x2)	Front hot-swap: 12 x 2.5" Gen5 NVMe/SATA/SAS4 *SAS card is required to support SAS drives Internal M.2: 2 x M.2 (PCIe 3.0 x2)
Expansion Slots	4 x PCIe 5.0 x16 FHFL for GPUs 1 x PCIe 5.0 x16 FHHL	1 x PCIe 5.0 x16 FHFL for GPUs 1 x PCIe 5.0 x16 FHHL	1 x PCIe 5.0 x16 FHFL for GPUs 1 x PCIe 5.0 x16 FHHL 2 x OCP 3.0 Gen5 x16
I/O Ports	Front: 2 x USB 3.2 Gen1 Rear: 2 x USB 3.2 Gen1 1 x Mini-DP 1 x RJ45 1 x MLAN	Front: 2 x USB 3.2 Gen1 Rear: 2 x USB 3.2 Gen1 1 x Mini-DP 1 x RJ45 1 x MLAN	Front: 2 x USB 3.2 Gen1 Rear: 2 x USB 3.2 Gen1 1 x Mini-DP 1 x RJ45 1 x MLAN
Security	Optional TPM 2.0 module: CTM012	Optional TPM 2.0 module: CTM012	Optional TPM 2.0 module: CTM012
Power Supply	Dual redundant power supply 2700W 80+ Titanium	Dual redundant power supply 2000W 80+ Titanium	Dual redundant power supply 2000W 80+ Titanium
System Management	ASPEED® AST2600 BMC GIGABYTE Management Console	ASPEED® AST2600 BMC GIGABYTE Management Console	ASPEED® AST2600 BMC GIGABYTE Management Console
Other Features	Dual ROM architecture Supports up to 4 x Dual slot Gen5 GPUs	Dual ROM architecture Supports 1 x Dual slot Gen5 GPU	Dual ROM architecture Supports 1 x Dual slot Gen5 GPU

^[1] AMD EPYC™ 9005 series CPU: Up to 5200 MT/s (1DPC), 4400 MT/s (1R 2DPC), 4000 MT/s (2R 2DPC)

^[2] AMD EPYC™ 9004 series CPU: Up to 4800 MT/s (1DPC), 3600 MT/s (2DPC)

Rack Server



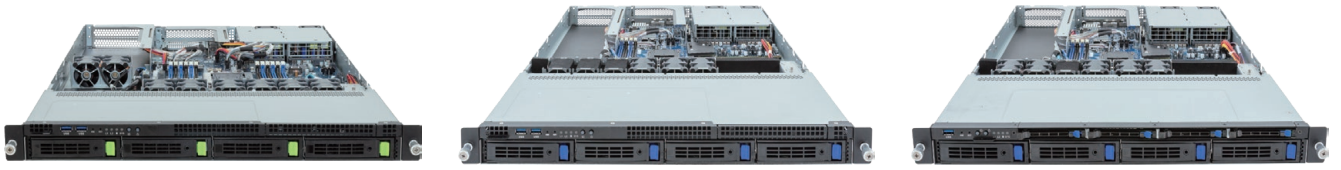
Model	R243-EG0-AAF1/AAL1	R243-E30-AAC1 / AAH1	R243-E33-AAF1 / AAL1
Motherboard	MEG3-GU0	ME33-DC0	ME33-DC0
Form Factor	2U (W438 x H87.5 x D815 mm)	2U (W438 x H87.5x D710 mm)	2U (W438 x H87.5x D710 mm)
CPU	AMD EPYC™ 8004 series Single processor, Socket SP6 cTDP up to 225W	AMD EPYC™ 8004 series Single processor, Socket SP6 cTDP up to 225W	AMD EPYC™ 8004 series Single processor, Socket SP6 cTDP up to 225W
Chipset	System on Chip	System on Chip	System on Chip
Memory	6-Channel DDR5 RDIMM, 12 x DIMMs Up to 4800MT/s(1DPC), 3600MT/s(2DPC)	6-Channel DDR5 RDIMM, 12 x DIMMs Up to 4800MT/s(1DPC), 3600MT/s(2DPC)	6-Channel DDR5 RDIMM, 12 x DIMMs Up to 4800MT/s(1DPC), 3600MT/s(2DPC)
LAN	1 x MLAN	1 x 1Gb/s LAN 1 x MLAN	1 x 1Gb/s LAN 1 x MLAN
Storage	Front hot-swap: 12 x 3.5"/2.5" SATA/SAS *SAS card is required to support SAS drives Internal M.2: 1 x M.2 (PCIe 3.0 x4)	Front hot-swap: 4 x 3.5"/2.5" Gen5 NVMe/SATA/SAS4 8 x 3.5"/2.5" SATA/SAS4 *SAS card is required to support SAS drives Internal M.2: 1 x M.2 (PCIe 3.0 x4)	Front hot-swap: 12 x 3.5"/2.5" SATA/SAS4 *SAS card is required to support SAS drives Internal M.2: 1 x M.2 (PCIe 3.0 x4)
Expansion Slots	4 x PCIe 5.0 x16 FHFL for GPUs 1 x OCP 3.0 Gen5 x16	2 x PCIe 5.0 x16 FHHL 2 x OCP 3.0 Gen5 x16	3 x PCIe 5.0 x16 FHFL for GPUs 2 x OCP 3.0 Gen5 x16
I/O Ports	Front: 2 x USB 3.2 Gen1 Rear: 2 x USB 3.2 Gen1 1 x Mini-DP 1 x MLAN	Front: 2 x USB 3.2 Gen1 Rear: 2 x USB 3.2 Gen1 1 x Mini-DP 1 x RJ45 1 x MLAN	Front: 2 x USB 3.2 Gen1 Rear: 2 x USB 3.2 Gen1 1 x Mini-DP 1 x RJ45 1 x MLAN
Security	Optional TPM 2.0 module: CTM010	Optional TPM 2.0 module: CTM010	Optional TPM 2.0 module: CTM010
Power Supply	1+1 redundant power supply [AAF1] 2400W 80+ Platinum [AAL1] 2700W 80+ Titanium	1+1 redundant power supply [AAC1] 1300W 80+ Platinum [AAH1] 1300W 80+ Titanium	1+1 redundant power supply [AAF1] 2400W 80+ Platinum [AAL1] 2700W 80+ Titanium
System Management	ASPEED® AST2600 BMC GIGABYTE Management Console	ASPEED® AST2600 BMC GIGABYTE Management Console	ASPEED® AST2600 BMC GIGABYTE Management Console
Other Features	Dual ROM architecture Supports up to 4 x Dual slot Gen5 GPUs	Dual ROM architecture	Dual ROM architecture Supports up to 3 x Dual slot Gen5 GPUs

Rack Server



Model	R143-EG0-AAC1 / AAC2	R143-EG2-AAC2	R143-E32-AAC1 / AAH1
Motherboard	MEG3-GU0	MEG3-GU0	ME33-DC0
Form Factor	1U (W438 x H43.5 x D815 mm)	1U (W438 x H43.5 x D815 mm)	1U (W438 x H43.5 x D710 mm)
CPU	AMD EPYC™ 8004 series Single processor, Socket SP6 cTDP up to 225W	AMD EPYC™ 8004 series Single processor, Socket SP6 cTDP up to 225W	AMD EPYC™ 8004 series Single processor, Socket SP6 cTDP up to 225W
Chipset	System on Chip	System on Chip	System on Chip
Memory	6-Channel DDR5 RDIMM, 12 x DIMMs Up to 4800MT/s(1DPC), 3600MT/s(2DPC)	6-Channel DDR5 RDIMM, 12 x DIMMs Up to 4800MT/s(1DPC), 3600MT/s(2DPC)	6-Channel DDR5 RDIMM, 12 x DIMMs Up to 4800MT/s(1DPC), 3600MT/s(2DPC)
LAN	1 x MLAN	1 x MLAN	1 x 1Gb/s LAN 1 x MLAN
Storage	Front hot-swap: [AAC1] 4 x 3.5"/2.5" SATA/SAS [AAC2] 4 x 3.5"/2.5" Gen4 NVMe/SATA/SAS *SAS card is required to support SAS drives Internal M.2: 1 x M.2 (PCIe 3.0 x4)	Front hot-swap: 4 x 2.5" Gen4 NVMe/SATA/SAS 8 x 2.5" SATA/SAS *SAS card is required to support SAS drives Internal M.2: 1 x M.2 (PCIe 3.0 x4)	Front hot-swap: 4 x 2.5" Gen5 NVMe/SATA/SAS4 8 x 2.5" SATA/SAS4 *SAS card is required to support SAS drives Internal M.2: 1 x M.2 (PCIe 3.0 x4)
Expansion Slots	1 x PCIe 5.0 x16 FHFL for GPUs 1 x PCIe 5.0 x16 FHFL 1 x PCIe 5.0 x16 FHHL 1 x OCP 3.0 Gen5 x16	1 x PCIe 5.0 x16 FHFL for GPUs 1 x PCIe 5.0 x16 FHFL 1 x PCIe 5.0 x16 FHHL 1 x OCP 3.0 Gen5 x16	2 x PCIe 5.0 x16 FHHL 2 x OCP 3.0 Gen5 x16
I/O Ports	Front: 2 x USB 3.2 Gen1 Rear: 2 x USB 3.2 Gen1 1 x Mini-DP 1 x MLAN	Front: 1 x USB 3.2 Gen1 Rear: 2 x USB 3.2 Gen1 1 x Mini-DP 1 x MLAN	Front: 1 x USB 3.2 Gen1 Rear: 2 x USB 3.2 Gen1 1 x Mini-DP 1 x RJ45 1 x MLAN
Security	Optional TPM 2.0 module: CTM010	Optional TPM 2.0 module: CTM010	Optional TPM 2.0 module: CTM010
Power Supply	1+1 redundant power supply 1300W 80+ Platinum	1+1 redundant power supply 1300W 80+ Platinum	1+1 redundant power supply [AAC1] 1300W 80+ Platinum [AAH1] 1300W 80+ Titanium
System Management	ASPEED® AST2600 BMC GIGABYTE Management Console	ASPEED® AST2600 BMC GIGABYTE Management Console	ASPEED® AST2600 BMC GIGABYTE Management Console
Other Features	Dual ROM architecture Supports 1 x Dual slot Gen5 GPU	Dual ROM architecture Supports 1 x Dual slot Gen5 GPU	Dual ROM architecture

Rack Server



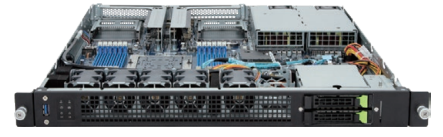
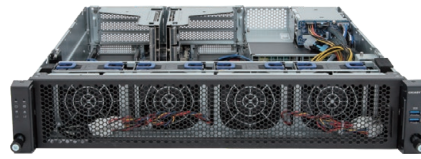
Model	R143-E30-AAB1 / AAG1	R133-C10-AAA* / AAG*	R133-C11-AAB1 / AAG1
Motherboard	ME33-DC0	MC13-BL1	MC13-BL0
Form Factor	1U (W438 x H43.5 x D710 mm)	1U (W438 x H43.5x D710 mm)	1U (W438 x H43.5x D710 mm)
CPU	AMD EPYC™ 8004 series Single processor, Socket SP6 cTDP up to 225W	AMD EPYC™ 4004 series AMD Ryzen™ 7000 series Single processor, Socket AM5 TDP up to 105W	AMD EPYC™ 4004 series AMD Ryzen™ 7000 series Single processor, Socket AM5 TDP up to 170W
Chipset	System on Chip	AMD B650E chipset	AMD B650E chipset
Memory	6-Channel DDR5 RDIMM, 12 x DIMMs Up to 4800MT/s(1DPC), 3600MT/s(2DPC)	2-Channel DDR5 UDIMM, 4 x DIMMs Up to 5200MT/s(1DPC), 3600MT/s(2DPC)	2-Channel DDR5 UDIMM, 4 x DIMMs Up to 5200MT/s(1DPC), 3600MT/s(2DPC)
LAN	1 x 1Gb/s LAN 1 x MLAN	2 x 1Gb/s LAN 1 x MLAN	2 x 1Gb/s LAN 2 x 10Gb/s LAN 1 x MLAN
Storage	Front hot-swap: 4 x 3.5"/2.5" Gen5 NVMe/SATA/SAS4 *SAS card is required to support SAS drives Internal M.2: 1 x M.2 (PCIe 3.0 x4)	Front hot-swap: [AAA1/AAG1] 4 x 3.5"/2.5" SATA [AAA2/AAG2] 4 x 3.5"/2.5" Gen4 NVMe*/SATA *Hot-swap is not supported on NVMe drives. Internal M.2: 1 x M.2 (PCIe 4.0 x4)	Front hot-swap: 4 x 3.5"/2.5" SATA 4 x 2.5" 7mm SATA *SATA supported only Internal M.2: 1 x M.2 (PCIe 4.0 x4)
Expansion Slots	2 x PCIe 5.0 x16 FHFL 2 x OCP 3.0 Gen5 x16	[AAA1/AAG1] 1 x PCIe 5.0 x16 FHFL 1 x PCIe 4.0 x4 FHFL [AAA2/AAG2] 1 x PCIe 4.0 x4 FHFL	1 x PCIe 5.0 x16 FHFL for GPU 1 x PCIe 4.0 x4 FHFL
I/O Ports	Front: 2 x USB 3.2 Gen1 Rear: 2 x USB 3.2 Gen1 1 x Mini-DP 1 x RJ45 1 x MLAN	Front: 2 x USB 3.2 Gen1 Rear: 2 x USB 3.2 Gen1 1 x Mini-DP 2 x RJ45 1 x MLAN	Front: 1 x USB 3.2 Gen1 Rear: 2 x USB 3.2 Gen1 1 x Mini-DP 4 x RJ45 1 x MLAN
Security	Optional TPM 2.0 module: CTM010	Optional TPM 2.0 module: CTM010	Optional TPM 2.0 module: CTM010
Power Supply	1+1 redundant power supply [AAB1] 800W 80+ Platinum [AAG1] 850W 80+ Titanium	1+1 redundant power supply [AAA*] 550W 80+ Platinum [AAG*] 800W 80+ Titanium	1+1 redundant power supply [AAB1] 800W 80+ Platinum [AAG1] 800W 80+ Titanium
System Management	ASPEED® AST2600 BMC GIGABYTE Management Console	ASPEED® AST2600 BMC GIGABYTE Management Console	ASPEED® AST2600 BMC GIGABYTE Management Console
Other Features	Dual ROM architecture	N/A	Supports 1 x Dual slot Gen5 GPU

Rack Server



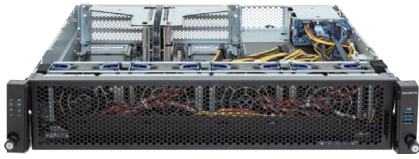
Model	R133-C13-AAB1 / AAG1	R123-C00-AA01	R113-C10-AA01 / AA02
Motherboard	MC13-BL1	MC03-CE0	MC13-LE0
Form Factor	1U (W438 x H43.5x D710 mm)	1U (W438 x H43.5x D536 mm)	1U (W430 x H43.5 x D393.2 mm)
CPU	AMD EPYC™ 4004 series AMD Ryzen™ 7000 series Single processor, Socket AM5 TDP up to 170W	AMD EPYC™ 4004 series AMD Ryzen™ 7000 series Single processor, Socket AM5 TDP up to 105W	AMD EPYC™ 4004 series AMD Ryzen™ 7000 series Single processor, Socket AM5 TDP up to 105W
Chipset	AMD B650E chipset	AMD B650E chipset	AMD B650E chipset
Memory	2-Channel DDR5 UDIMM, 4 x DIMMs Up to 5200MT/s(1DPC), 3600MT/s(2DPC)	2-Channel DDR5 UDIMM, 4 x DIMMs Up to 5200MT/s(1DPC), 3600MT/s(2DPC)	2-Channel DDR5 UDIMM, 4 x DIMMs Up to 5200MT/s(1DPC), 3600MT/s(2DPC)
LAN	2 x 1Gb/s LAN 1 x MLAN	2 x 1Gb/s LAN 1 x MLAN	2 x 1Gb/s LAN 1 x MLAN
Storage	Front hot-swap: 4 x 3.5"/2.5" SATA Internal M.2: 1 x M.2 (PCIe 4.0 x4)	Front hot-swap: 4 x 3.5"/2.5" SATA Internal M.2: 1 x M.2 (PCIe 4.0 x4)	Front hot-swap: 2 x 2.5" SATA Internal drives: 2 x 2.5" SATA Internal M.2: 1 x M.2 (PCIe 5.0 x4)
Expansion Slots	1 x PCIe 5.0 x16 FHFL for GPU 1 x PCIe 4.0 x4 FHHL	1 x PCIe 5.0 x16 FHHL 2 x PCIe 4.0 x4 LP	1 x PCIe 5.0 x16 FHHL
I/O Ports	Front: 2 x USB 3.2 Gen1 Rear: 2 x USB 3.2 Gen1 1 x Mini-DP 2 x RJ45 1 x MLAN	Front: 2 x USB 3.2 Gen1 Rear: 2 x USB 3.2 Gen1 1 x COM 1 x VGA 2 x RJ45 1 x MLAN	Front: 2 x USB 3.2 Gen1 Rear: 2 x USB 3.2 Gen1 1 x COM 1 x VGA 2 x RJ45 1 x MLAN
Security	Optional TPM 2.0 module: CTM010	Optional TPM 2.0 module: CTM010	Optional TPM 2.0 module: CTM010
Power Supply	1+1 redundant power supply [AAB1] 800W 80+ Platinum [AAG1] 800W 80+ Titanium	Single power supply 400W 80+ Gold	Single power supply [AA01] 350W 80+ Bronze [AA02] 400W 80+ Gold
System Management	ASPEED® AST2600 BMC GIGABYTE Management Console	ASPEED® AST2600 BMC GIGABYTE Management Console	ASPEED® AST2600 BMC GIGABYTE Management Console
Other Features	Supports 1 x Dual slot Gen5 GPU	N/A	N/A

Edge Server



Model	E283-Z91-AAD1 / AAV1	E263-Z34-AAJ1	E163-Z34-AAH1
Motherboard	MZ93-FS1	MZ33-DC1	MZ33-DC1
Form Factor	2U (W438 x H87 x D815 mm)	2U (W438 x H87.5x D520 mm)	1U (W438 x H43.5x D520 mm)
CPU	AMD EPYC™ 9005/9004 series Dual processors, Socket SP5 cTDP up to 500W with optional heatsink	AMD EPYC™ 9005/9004 series Single processor, Socket SP5 cTDP up to 500W at 25°C ambient	AMD EPYC™ 9005/9004 series Single processor, Socket SP5 cTDP up to 500W at 25°C ambient
Chipset	System on Chip	System on Chip	System on Chip
Memory	12-Channel DDR5 RDIMM, 24 x DIMMs [EPYC 9005] Up to 6000 MT/s [EPYC 9004] Up to 4800 MT/s	12-Channel DDR5 RDIMM, 12 x DIMMs [EPYC 9005] Up to 6000 MT/s [EPYC 9004] Up to 4800 MT/s	12-Channel DDR5 RDIMM, 12 x DIMMs [EPYC 9005] Up to 6000 MT/s [EPYC 9004] Up to 4800 MT/s
LAN	2 x 1Gb/s LAN 1 x MLAN	1 x 1Gb/s LAN 1 x MLAN	1 x 1Gb/s LAN 1 x MLAN
Storage	Rear hot-swap: 4 x 2.5" SATA/SAS4 *SAS card is required to support SAS drives Internal M.2: 1 x M.2 (PCIe 3.0 x4) 1 x M.2 (PCIe 3.0 x2)	Rear hot-swap: 2 x 2.5" Gen5 NVMe/SATA/SAS4 *SAS card is required to support SAS drives Internal M.2: 1 x M.2 (PCIe 3.0 x4)	Front hot-swap: 2 x 2.5" Gen5 NVMe/SATA/SAS4 *SAS card is required to support SAS drives Internal M.2: 1 x M.2 (PCIe 3.0 x4)
Expansion Slots	6 x PCIe 5.0 x16 FHHL 2 x OCP 3.0 Gen5 x16	2 x PCIe 5.0 x16 FHHL for GPUs 2 x OCP 3.0 Gen5 x16	2 x PCIe 5.0 x16 FHHL 2 x OCP 3.0 Gen5 x16
I/O Ports	Front: 2 x USB 3.2 Gen1 Rear: 2 x USB 3.2 Gen1 1 x Mini-DP 2 x RJ45 1 x MLAN	Front: 2 x USB 3.2 Gen1 Rear: 2 x USB 3.2 Gen1 1 x Mini-DP 1 x RJ45 1 x MLAN	Front: 1 x USB 3.2 Gen1 Rear: 2 x USB 3.2 Gen1 1 x Mini-DP 1 x RJ45 1 x MLAN
Security	Optional TPM 2.0 module: CTM010	Optional TPM 2.0 module: CTM012	Optional TPM 2.0 module: CTM012
Power Supply	Dual redundant power supply [AAD1] 1600W 80+ Platinum [AAV1] 1600W 80+ Titanium	Dual redundant power supply 2000W 80+ Titanium	Dual redundant power supply 1300W 80+ Titanium
System Management	ASPEED® AST2600 BMC GIGABYTE Management Console	ASPEED® AST2600 BMC GIGABYTE Management Console	ASPEED® AST2600 BMC GIGABYTE Management Console
Other Features	Dual ROM architecture	Dual ROM architecture Supports up to 2 x Dual slot Gen5 GPUs	Dual ROM architecture

Edge Server



Model	E243-E30-AAD1 / AAV1	E143-E30-AAB1 / AAG1	E133-C10-AAA1 / AAG1
Motherboard	ME33-DC0	ME33-DC0	MC13-BL1
Form Factor	2U (W438 x H87.5x D520 mm)	1U (W438 x H43.5x D520 mm)	1U (W438 x H43.5x D520 mm)
CPU	AMD EPYC™ 8004 series Single processor, Socket SP6 cTDP up to 225W	AMD EPYC™ 8004 series Single processor, Socket SP6 cTDP up to 225W	AMD EPYC™ 4004 series AMD Ryzen™ 7000 series Single processor, Socket AM5 TDP up to 105W
Chipset	System on Chip	System on Chip	AMD B650E chipset
Memory	6-Channel DDR5 RDIMM, 12 x DIMMs Up to 4800MT/s(1DPC), 3600MT/s(2DPC)	6-Channel DDR5 RDIMM, 12 x DIMMs Up to 4800MT/s(1DPC), 3600MT/s(2DPC)	2-Channel DDR5 UDIMM, 4 x DIMMs Up to 5200MT/s(1DPC), 3600MT/s(2DPC)
LAN	1 x 1Gb/s LAN 1 x MLAN	1 x 1Gb/s LAN 1 x MLAN	2 x 1Gb/s LAN 1 x MLAN
Storage	Rear hot-swap: 2 x 2.5" Gen5 NVMe/SATA/SAS4 *SAS card is required to support SAS drives Internal M.2: 1 x M.2 (PCIe 3.0 x4)	Front hot-swap: 2 x 2.5" Gen5 NVMe/ SATA/SAS4 *SAS card is required to support SAS drives Internal M.2: 1 x M.2 (PCIe 3.0 x4)	Front hot-swap: 2 x 2.5" SATA *SATA supported only Internal M.2: 1 x M.2 (PCIe 4.0 x4)
Expansion Slots	2 x PCIe 5.0 x16 FHFL for GPUs 2 x OCP 3.0 Gen5 x16	2 x PCIe 5.0 x16 FHFL 2 x OCP 3.0 Gen5 x16	1 x PCIe 5.0 x16 FHFL 1 x PCIe 4.0 x4 FHFL
I/O Ports	Front: 2 x USB 3.2 Gen1 Rear: 2 x USB 3.2 Gen1 1 x Mini-DP 1 x RJ45 1 x MLAN	Front: 1 x USB 3.2 Gen1 Rear: 2 x USB 3.2 Gen1 1 x Mini-DP 1 x RJ45 1 x MLAN	Front: 1 x USB 3.2 Gen1 Rear: 2 x USB 3.2 Gen1 1 x Mini-DP 2 x RJ45 1 x MLAN
Security	Optional TPM 2.0 module: CTM010	Optional TPM 2.0 module: CTM010	Optional TPM 2.0 module: CTM010
Power Supply	1+1 redundant power supply [AAD1] 1600W 80+ Platinum [AAV1] 1600W 80+ Titanium	1+1 redundant power supply [AAB1] 800W 80+ Platinum [AAG1] 850W 80+ Titanium	1+1 redundant power supply [AAA1] 550W 80+ Platinum [AAG1] 800W 80+ Titanium
System Management	ASPEED® AST2600 BMC GIGABYTE Management Console	ASPEED® AST2600 BMC GIGABYTE Management Console	ASPEED® AST2600 BMC GIGABYTE Management Console
Other Features	Dual ROM architecture Supports up to 2 x Dual slot Gen5 GPUs	Dual ROM architecture	N/A

Tower Server / Workstation

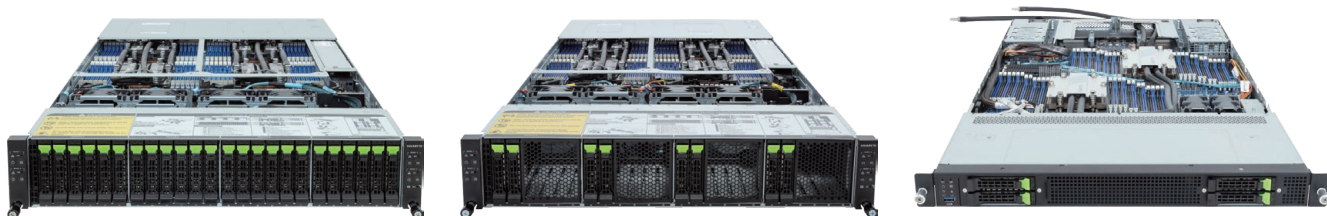


Model	W773-H5D-AA01	W771-Z00	W332-Z00 (rev. 200)	W331-Z00
Motherboard	MH53-G40	MC62-G40	MC13-NB1	MC12-NB0
Dimensions	W218 x H455 x D726.3 mm	W175 x H438 x D680 mm	W198 x H370 x D402 mm	W198 x H370 x D402 mm
CPU	AMD Ryzen™ Threadripper™ PRO 7000 WX-Series Single processor, Socket sTR5	AMD Ryzen™ Threadripper™ PRO 5000/3000 WX-Series Single processor, Socket sWRX8	AMD Ryzen™ 7000 series Single processor, Socket AM5	AMD Ryzen™ 5000/4000/3000 series Single processor, Socket AM4
Chipset	AMD WRX90 chipset	AMD WRX80 chipset	AMD B650E chipset	AMD B550 chipset
Memory	8 x DDR5 DIMM slots 8-Channel RDIMM Up to 5200 MT/s	8 x DDR4 DIMM slots 8-Channel UDIMM/RDIMM/LRDIMM 3200/2933/2666/2400/2133 MT/s	4 x DDR5 DIMM slots 2-Channel UDIMM 5200 MT/s(1DPC), 3600 MT/s(2DPC)	4 x DDR4 DIMM slots 2-Channel UDIMM 3200/2933/2667/2400 MT/s
LAN	2 x 10Gb/s LAN 1 x MLAN	2 x 10Gb/s LAN 1 x 1Gb/s LAN 1 x MLAN	1 x 2.5Gb/s LAN 1 x 1Gb/s DASH LAN	2 x 1Gb/s LAN
Audio	Realtek® ALC897 HD Audio Codec	Realtek® ALC4080 HD Audio Codec	Realtek® ALC897 Audio Codec	Realtek® ALC897 Audio Codec
Storage	4 x 3.5"/2.5" SATA hot-swap bays 4 x M.2 (PCIe 5.0 x4) Optional 4 x SATA hot-swap bays Optional ODD devices	4 x 3.5"/2.5" SATA hot-swap bays 2 x M.2 (PCIe 4.0 x4 or SATAIII) Optional 4 x SATA hot-swap bays Optional ODD devices	2 x 3.5" SATA fixed drive bays 2 x M.2 (PCIe 5.0 x4) Optional ODD devices	2 x 3.5" SATA fixed drive bays 1 x M.2 (PCIe 4.0 x4) 1 x M.2 (PCIe 3.0 x2 or SATAIII) Optional ODD devices
Expansion Slots	6 x PCIe x16 (PCIe 5.0 x16) 1 x M.2 for WiFi	6 x PCIe x16 (PCIe 4.0 x16) 1 x PCIe x16 (PCIe 4.0 x8) 1 x M.2 for WiFi	1 x PCIe x16 (PCIe 5.0 x16) 1 x PCIe x16 (PCIe 4.0 x4) 1 x PCIe x1 (PCIe 4.0 x1) 1 x M.2 for WiFi	1 x PCIe x16 (PCIe 4.0 x16) 1 x PCIe x16 (PCIe 3.0 x4) 1 x PCIe x1 (PCIe 3.0 x1) 1 x M.2 for WiFi
I/O Ports	Front: 1 x USB 3.2 Gen1 Type-C 2 x USB 3.2 Gen1 Type-A 2 x Audio jacks Rear: 1 x USB 3.2 Gen2x2 Type-C 3 x USB 3.2 Gen2 Type-A 1 x VGA 1 x COM 2 x RJ45 1 x MLAN 3 x Audio jack	Front: 2 x USB 3.2 Gen1 Rear: 1 x VGA 3 x RJ45 1 x MLAN 6 x USB 3.2 Gen2 3 x Audio jacks	Front: 2 x USB 3.2 Gen1 1 x Line out 1 x Mic in Rear: 1 x DisplayPort 2 x HDMI 2 x Antenna ports (option) 3 x USB 3.2 Gen2 Type-A 1 x USB 3.2 Gen2 Type-C 2 x RJ45 3 x Audio jacks	Front: 2 x USB 3.2 Gen1 1 x Line out 1 x Mic in Rear: 1 x DisplayPort 1 x HDMI 2 x Antenna ports 2 x USB 3.2 Gen2 Type-A 4 x USB 2.0 Type-A 2 x RJ45 3 x Audio jacks
Security	Optional TPM 2.0 module: CTM010	Optional TPM 2.0 module: CTM010	Optional TPM 2.0 module: CTM010	Optional TPM 2.0 module: CTM010
Power Supply	Single 2000W 80+ Gold ATX PSU	1+1 2000W 80+ Platinum PSU	Single 500W 80+ Bronze PSU	Single 500W 80+ Bronze PSU
System Management	ASPEED® AST2600 BMC GIGABYTE Management Console	ASPEED® AST2600 BMC GIGABYTE Management Console	Realtek® DASH Remote Management	Realtek® DASH Remote Management
Other Features	Supports up to 4 x Dual slot GPUs	Supports up to 4 x Dual slot GPUs	Supports 1 x Dual slot GPU	Supports 1 x Dual slot GPU

Direct Liquid Cooling Server



Model	G593-ZD1-LAX1/LAX3	G363-ZR0-LAX1/LAX3	R183-Z90-LAD1
Form Factor	5U (W447 x H219.7 x D945 mm)	3U (W448 x H130 x D800 mm)	1U (W438 x H43.5 x D815 mm)
CPU	Dual AMD EPYC™ 9005/9004 series	Dual AMD EPYC™ 9005/9004 series	Dual AMD EPYC™ 9005/9004 series
Memory	12-Channel DDR5 RDIMM, 24 x DIMMs	12-Channel DDR5 RDIMM, 24 x DIMMs	12-Channel DDR5 RDIMM, 24 x DIMMs
LAN	2 x 10Gb/s LAN, 1 x MLAN	2 x 1Gb/s LAN, 2 x 10Gb/s LAN, 1 x MLAN	2 x 1Gb/s LAN, 1 x MLAN
Storage	8 x 2.5" Gen5 NVMe hot-swap bays 1 x M.2 (PCIe 3.0 x4) 1 x M.2 (PCIe 3.0 x1)	4 x 2.5" Gen5 NVMe/SATA hot-swap bays 4 x 2.5" Gen5 NVMe hot-swap bays 1 x M.2 (PCIe 4.0 x4)	4 x 3.5"/2.5" Gen4 NVMe/SATA hot-swap bays 2 x M.2 (PCIe 3.0 x4) 1 x M.2 (PCIe 3.0 x2)
Expansion Slots	4 x PCIe 5.0 x16 FHHL 8 x PCIe 5.0 x16 LP	6 x PCIe 5.0 x16 LP	1 x PCIe 5.0 x16 FHHL 1 x OCP 3.0 Gen5 x16
Power Supply	4+2 3000W 80+ Titanium PSUs	2+1 3000W 80+ Titanium PSUs	1+1 1600W 80+ Platinum PSUs
Other Features	Dual ROM architecture [LAX1] NVIDIA HGX™ H100 8-GPU [LAX3] NVIDIA HGX™ H200 8-GPU	Dual ROM architecture [LAX1] NVIDIA HGX™ H100 4-GPU [LAX3] NVIDIA HGX™ H200 4-GPU	Dual ROM architecture



Model	H273-Z80-LAW1 / LAN1	H273-Z81-LAW1 / LAN1	R183-ZK0-LAD1
Form Factor	2U 4-Node (W440 x H87.5 x D877 mm)	2U 4-Node (W440 x H87.5 x D877 mm)	1U (W438 x H43.5 x D815 mm)
CPU	Dual AMD EPYC™ 9005/9004 per node	Dual AMD EPYC™ 9005/9004 per node	Dual AMD EPYC™ 9005/9004 series
Memory	12-Channel DDR5 RDIMM, 96 x DIMMs	12-Channel DDR5 RDIMM, 96 x DIMMs	12-Channel DDR5 RDIMM, 48 x DIMMs
LAN	8 x 1Gb/s LAN, 4 x MLAN	8 x 1Gb/s LAN, 4 x MLAN	2 x 1Gb/s LAN, 1 x MLAN
Storage	24 x 2.5" Gen4 NVMe/SATA hot-swap bays Optional 4 x M.2 (PCIe 4.0 x4)	8 x 2.5" Gen4 NVMe/SATA hot-swap bays Optional 4 x M.2 (PCIe 4.0 x4)	4 x 2.5" Gen5 NVMe/SATA hot-swap bays 1 x M.2 (PCIe 3.0 x4) 1 x M.2 (PCIe 3.0 x2)
Expansion Slots	4 x PCIe 5.0 x16 LP 4 x OCP 3.0 Gen5 x16	4 x PCIe 5.0 x16 LP 4 x OCP 3.0 Gen5 x16	1 x PCIe 5.0 x16 FHHL 2 x OCP 3.0 Gen5 x16
Power Supply	[LAW1] Dual 3000W 80+ Titanium PSUs [LAN1] Dual 2600W 80+ Titanium PSUs	[LAW1] Dual 3000W 80+ Titanium PSUs [LAN1] Dual 2600W 80+ Titanium PSUs	1+1 2000W 80+ Titanium PSUs
Other Features	Dual ROM architecture Multiplexing management topology	Dual ROM architecture Multiplexing management topology	Dual ROM architecture

Direct Liquid Cooling Rack



Model	DL90-ST0
Dimensions	W800 x D1200 x H1115 mm
Hardware Capacity	Up to 14U EIA servers
Heat Dissipation Capacity	9kW at approach temperature 25°C
Power Supply	1+1 redundant total power up to 17.3 kVA
Weight	Total weight: 215 kg
CDU Power Consumption	Full load: 2000W
Electrical Connection	PDU: IEC 60309 32A-3P+N+E, 6H, Plug x2 CDU: IEC 60320 C19, Plug x2
Water Flow Rate	7 - 30 LPM

Immersion Cooling Tank

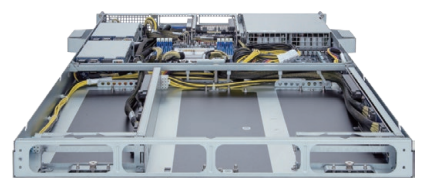
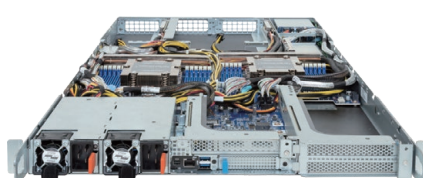


Model	A1P0-EB0	A1P0-EA0
Hardware Capacity	21U + 2U x 2 (EIA)	12U (EIA)
Cooling Power	80 KW	40 KW
Unit Size	Tank: W1.16 x D0.91 x H1.49 m, CDU: W0.48 x D0.86 x H1.62 m	W0.87 x D1.2 x H1.56 m
Unit Weight	Tank: 450 kg (w/o coolant), CDU: 325 kg	300 kg (w/o coolant)
Coolant Tank Volume	750 Liter (615 kg)	400 Liter (320 kg)
Power Plug	PDU: IEC 60309 63A - 3P+N+E, 6H, plug x2 CDU: IEC 60320 C19, plug x1	PDU: IEC 60309 32A - 3P+N+E, 6H, plug x2
Input Power Spec	3P+N+E 63A, 380-415VAC, 50/60Hz x2 1P+N+E 15A, 220-240VAC, 50/60Hz x1	3P+N+E 32A, 380-415VAC, 50/60Hz x2
Depth Supported	900 mm	900 mm
Cooling Pipe Size	2" clamp fitting (Tube OD 50.8 mm / Flange OD 63.9 mm)	PT 1-1/4" Male Adaptor (Pipe OD 42.7 mm)
Cooling Water Inlet	20-35°C	20-35°C
Cooling Water Flow	240 LPM	100 LPM

Immersion Ready Server

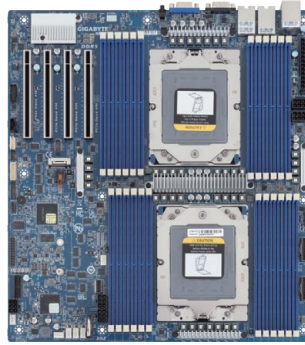
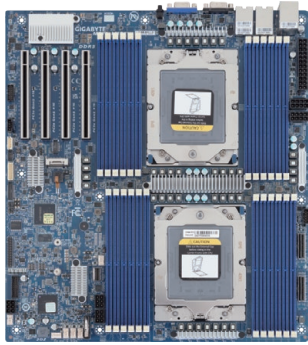


Model	H273-Z82-IAW1	G293-Z42-IAP1	G292-Z43-ICU1 / ICM1
Form Factor	2U 4-Node (W440 x H87.5 x D840 mm)	2U (W448 x H87.5 x D800 mm)	2U (W448 x H87.5 x D800 mm)
CPU	Dual AMD EPYC™ 9005/9004 series	Dual AMD EPYC™ 9005/9004 series	Dual AMD EPYC™ 7003 series
Memory	12-Channel DDR5 RDIMM, 96 x DIMMs	12-Channel DDR5 RDIMM, 24 x DIMMs	8-Channel DDR4 RDIMM/LRDIMM, 16 x DIMMs
LAN	8 x 1GbE LAN, 4 x MLAN	2 x 10Gb/s LAN, 1 x MLAN	2 x 10Gb/s LAN, 1 x MLAN
Storage	8 x 2.5" Gen4 NVMe/SATA hot-swap bays Optional 4 x M.2 slots (PCIe 4.0 x4)	4 x 2.5" SATA hot-swap bays 4 x 2.5" Gen5 NVMe/SATA hot-swap bays	4 x 2.5" SATA hot-swap bays 4 x 2.5" Gen4 NVMe/SATA hot-swap bays
Expansion Slots	4 x PCIe 4.0 x16 LP 4 x OCP 3.0 Gen4 x16	8 x PCIe 5.0 x16 FHFL for GPUs 2 x PCIe 5.0 x16 LP	16 x PCIe 4.0 x16 FHFL for GPUs 2 x PCIe 4.0 x16 LP
Power Supply	Dual 3000W 80+ Titanium PSUs	Dual 3000W 80+ Titanium PSUs	[ICU1] Dual 2200W 80+ Platinum PSUs [ICM1] Dual 2200W 80+ Titanium PSUs
Other Features	Dual ROM architecture Multiplexing management topology	Dual ROM architecture Supports 8 x Dual slot GPUs	Supports 16 x Single slot GPUs



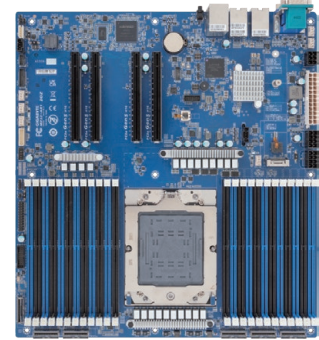
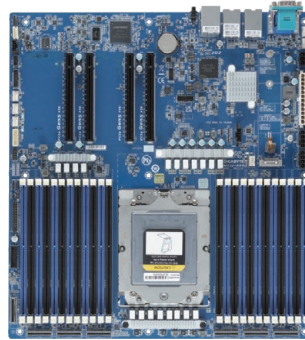
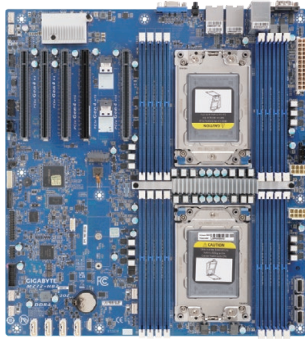
Model	R283-ZF0-IAL1	R183-ZF2-IAL1	G152-Z12-200 / 400
Form Factor	2U (W438 x H87.5 x D815 mm)	1U (W438 x H43.5 x D900 mm)	1U (W448 x H43.5 x D808 mm)
CPU	Dual AMD EPYC™ 9005/9004 series	Dual AMD EPYC™ 9005/9004 series	Single AMD EPYC™ 7003 series
Memory	24 x DDR5 RDIMM slots	24 x DDR5 RDIMM slots	8 x DDR4 RDIMM/LRDIMM slots
LAN	1 x MLAN	1 x MLAN	2 x 10Gb/s LAN, 1 x MLAN
Storage	8 x 3.5"/2.5" Gen5 NVMe/SATA hot-swap bays 4 x 3.5"/2.5" SATA/SATA hot-swap bays	2 x 2.5" Gen5 NVMe/SATA hot-swap bays	4 x 2.5" Gen4 NVMe internal bays
Expansion Slots	4 x PCIe 5.0 x16 FHFL for GPUs 1 x PCIe 5.0 x16 FHHL 1 x OCP 3.0 Gen5 x16	4 x PCIe 5.0 x16 FHFL for GPUs 1 x PCIe 5.0 x16 FHHL 1 x PCIe Gen5 x16 LP (Internal) 1 x OCP 3.0 Gen5 x16	[200] 2 x PCIe 4.0 x16 FHFL for GPUs [400] 4 x PCIe 4.0 x16 FHFL for GPUs 2 x PCIe 4.0 x16 LP
Power Supply	Dual 2700W 80+ Titanium PSUs	Dual 2700W 80+ Titanium PSUs	Dual 2000W 80+ Platinum PSUs
Other Features	Dual ROM architecture Supports 4 x Dual slot GPUs	Dual ROM architecture Supports 4 x Dual slot GPUs	[200] Supports 2 x Dual slot GPUs [400] Supports 4 x Single slot GPUs

Motherboard



Model	MZ73-LM0 (rev. 3.x)	MZ73-LM1 (rev. 3.x)	MZ73-LM2 (rev. 3.x)
Form Factor	E-ATX (W304.8 x D335.2 mm)	E-ATX (W304.8 x D335.2 mm)	E-ATX (W304.8 x D335.2 mm)
CPU	AMD EPYC™ 9005/9004 Series Dual processors, Socket SP5 cTDP up to 400W	AMD EPYC™ 9005/9004 Series Dual processors, Socket SP5 cTDP up to 400W	AMD EPYC™ 9005/9004 Series Dual processors, Socket SP5 cTDP up to 500W
Chipset	System on Chip	System on Chip	System on Chip
Memory	12-Channel DDR5 RDIMM, 24 x DIMMs [EPYC 9005] Up to 6000 MT/s [EPYC 9004] Up to 4800 MT/s	12-Channel DDR5 RDIMM, 24 x DIMMs [EPYC 9005] Up to 6000 MT/s [EPYC 9004] Up to 4800 MT/s	12-Channel DDR5 RDIMM, 24 x DIMMs [EPYC 9005] Up to 6000 MT/s [EPYC 9004] Up to 4800 MT/s
LAN	2 x 10Gb/s LAN 1 x MLAN	2 x 10Gb/s LAN 1 x MLAN	2 x 10Gb/s LAN 1 x MLAN
Video	Integrated in ASPEED® AST2600	Integrated in ASPEED® AST2600	Integrated in ASPEED® AST2600
Audio	N/A	N/A	N/A
Storage	1 x SlimSAS 4i (4 x SATAIII) 2 x MCIO 8i (4 x Gen5 NVMe or 16 x SATA) 1 x M.2 (PCIe 4.0 x4, 2280/22110)	1 x SlimSAS 4i (4 x SATAIII) 2 x SlimSAS 8i (4 x Gen4 NVMe or 16 x SATA) 1 x M.2 (PCIe 4.0 x4, 2280/22110)	1 x SlimSAS 4i (4 x SATAIII) 2 x MCIO 8i (4 x Gen5 NVMe or 16 x SATA) 1 x M.2 (PCIe 5.0 x4, 2280/22110)
Expansion Slots	4 x PCIe x16 (PCIe 5.0 x16)	4 x PCIe x16 (PCIe 4.0 x16)	4 x PCIe x16 (PCIe 5.0 x16)
Rear I/O	2 x USB 3.2 Gen1 1 x VGA 1 x COM 2 x RJ45 1 x MLAN	2 x USB 3.2 Gen1 1 x VGA 1 x COM 2 x RJ45 1 x MLAN	2 x USB 3.2 Gen1 1 x VGA 1 x COM 2 x RJ45 1 x MLAN
Security	1 x TPM header with SPI interface Optional TPM 2.0 module: CTM012	1 x TPM header with SPI interface Optional TPM 2.0 module: CTM012	1 x TPM header with SPI interface Optional TPM 2.0 module: CTM012
Power Supply Connectors	1 x 24-pin ATX main 2 x 8-pin ATX 12V 3 x 6-pin ATX 12V	1 x 24-pin ATX main 2 x 8-pin ATX 12V 3 x 6-pin ATX 12V	1 x 24-pin ATX main 2 x 8-pin ATX 12V 3 x 6-pin ATX 12V
Board Management	ASPEED® AST2600 BMC GIGABYTE Management Console	ASPEED® AST2600 BMC GIGABYTE Management Console	ASPEED® AST2600 BMC GIGABYTE Management Console

Motherboard

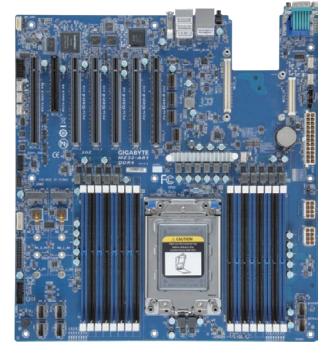
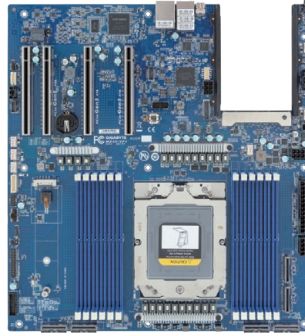
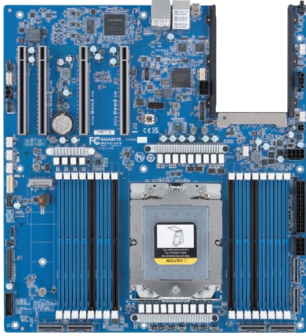


Model	MZ72-HB2 (rev. 3.x)	MZ33-AR0 (rev. 1.x/3.x)	MZ33-AR1 (rev. 3.x)
Form Factor	E-ATX (W305 x D330 mm)	E-ATX (W305 x D330 mm)	E-ATX (W305 x D330 mm)
CPU	AMD EPYC™ 7003/7002 Series Dual processors, Socket SP3 TDP up to 280W	AMD EPYC™ 9005/9004 Series Single processor, Socket SP5 cTDP up to 400W	AMD EPYC™ 9005/9004 Series Single processor, Socket SP5 cTDP up to 500W
Chipset	System on Chip	System on Chip	System on Chip
Memory	8-Channel DDR4 RDIMM/LRDIMM, 16 x DIMMs Up to 3200 MT/s	12-Channel DDR5 RDIMM, 24 x DIMMs Up to 4800MT/s (1DPC), 3600MT/s (2DPC)	12-Channel DDR5 RDIMM, 24 x DIMMs [EPYC 9005] Up to 5200 MT/s (1DPC) ^[1] [EPYC 9004] Up to 4800 MT/s (1DPC) ^[2]
LAN	2 x 10Gb/s LAN 1 x MLAN	2 x 10Gb/s LAN 1 x MLAN	2 x 10Gb/s LAN 1 x MLAN
Video	Integrated in ASPEED® AST2600	Integrated in ASPEED® AST2600	Integrated in ASPEED® AST2600
Audio	N/A	N/A	N/A
Storage	3 x SlimSAS 4i (3 x Gen4 NVMe or 12 x SATA) 2 x SlimSAS 4i (2 x Gen4 NVMe) 4 x 7-pin SATAIII 1 x M.2 (PCIe 4.0 x4, 2280/22110)	2 x M.2 8i (4 x Gen5 NVMe or 16 x SATA) 4 x M.2 8i (8 x Gen5 NVMe) 1 x M.2 8i (2 x Gen4 NVMe) 1 x M.2 (PCIe 4.0 x4, 2280/22110)	2 x M.2 8i (4 x Gen5 NVMe or 16 x SATA) 3 x M.2 8i (6 x Gen5 NVMe) 1 x M.2 8i (2 x Gen4 NVMe) 1 x M.2 (PCIe 4.0 x4, 2280/22110)
Expansion Slots	3 x PCIe x16 (PCIe 4.0 x16) 2 x PCIe x16 (PCIe 4.0 x8)	4 x PCIe x16 (PCIe 5.0 x16)	4 x PCIe x16 (PCIe 5.0 x16)
Rear I/O	2 x USB 3.2 Gen1 1 x VGA 1 x COM 2 x RJ45 1 x MLAN	2 x USB 3.2 Gen1 1 x VGA 1 x COM 2 x RJ45 1 x MLAN	2 x USB 3.2 Gen1 1 x VGA 1 x COM 2 x RJ45 1 x MLAN
Security	1 x TPM header with SPI interface Optional TPM 2.0 module: CTM010	1 x TPM header with SPI interface Optional TPM 2.0 module: CTM010	1 x TPM header with SPI interface Optional TPM 2.0 module: CTM012
Power Supply Connectors	1 x 24-pin ATX main 2 x 8-pin ATX 12V	1 x 24-pin ATX main 2 x 8-pin ATX 12V 1 x 6-pin ATX 12V	1 x 24-pin ATX main 2 x 8-pin ATX 12V 1 x 6-pin ATX 12V
Board Management	ASPEED® AST2600 BMC GIGABYTE Management Console	ASPEED® AST2600 BMC GIGABYTE Management Console	ASPEED® AST2600 BMC GIGABYTE Management Console

^[1] AMD EPYC™ 9005 series CPU: Up to 5200 MT/s (1DPC), 4400 MT/s (1R 2DPC), 4000 MT/s (2R 2DPC)

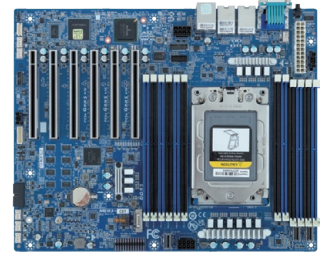
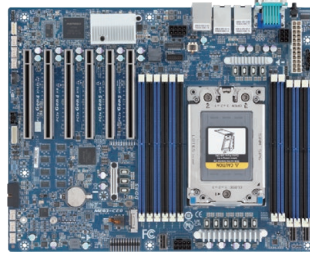
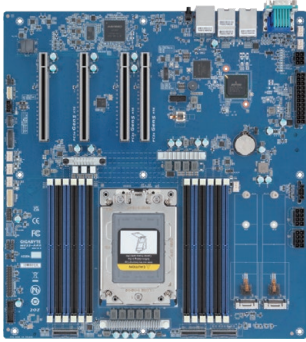
^[2] AMD EPYC™ 9004 series CPU: Up to 4800 MT/s (1DPC), 3600 MT/s (2DPC)

Motherboard



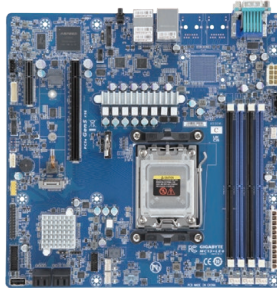
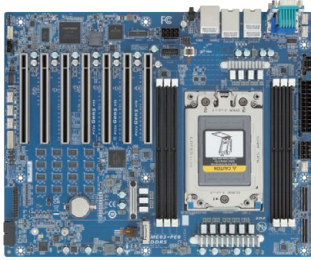
Model	MZ33-CP0 (rev. 1.x)	MZ33-CP1 (rev. 3.x)	MZ32-AR1 (rev. 3.x)
Form Factor	E-ATX (W304.8 x D330.2 mm)	E-ATX (W304.8 x D330.2 mm)	E-ATX (W305 x D330 mm)
CPU	AMD EPYC™ 9004 Series Single processor, Socket SP5 cTDP up to 400W	AMD EPYC™ 9005/9004 Series Single processor, Socket SP5 cTDP up to 500W	AMD EPYC™ 7003 Series Single processor, Socket SP3 cTDP up to 280W
Chipset	System on Chip	System on Chip	System on Chip
Memory	12-Channel DDR5 RDIMM, 16 x DIMMs Up to 4800 MT/s (1DPC), 3600 MT/s (2DPC)	12 x DDR5 RDIMM slots [EPYC 9005] Up to 6000 MT/s [EPYC 9004] Up to 4800 MT/s	8-Channel RDIMM/LRDIMM DDR4, 16 x DIMMs Up to 3200/2933 MT/s
LAN	2 x 1Gb/s LAN 1 x MLAN	2 x 1Gb/s LAN 1 x MLAN	2 x 10Gb/s LAN 1 x MLAN
Video	Integrated in ASPEED® AST2600	Integrated in ASPEED® AST2600	Integrated in ASPEED® AST2500
Audio	N/A	N/A	N/A
Storage	2 x MCIO 8i (4 x Gen4 NVMe or 16 x SATA) 4 x MCIO 8i (8 x Gen5 NVMe) 1 x M.2 (PCIe 3.0 x4, 2280/22110)	2 x MCIO 8i (4 x Gen4 NVMe or 16 x SATA) 4 x MCIO 8i (8 x Gen5 NVMe) 1 x M.2 (PCIe 3.0 x4, 2280/22110)	4 x SlimSAS (4 x Gen4 NVMe) 2 x SlimSAS (8 x SATA III) 1 x M.2 (PCIe 4.0 x4, 2242/2260/2280)
Expansion Slots	3 x PCIe x16 (PCIe 5.0 x16) 1 x PCIe x16 (PCIe 4.0 x16) 1 x OCP 3.0 Gen5 x16	3 x PCIe x16 (PCIe 5.0 x16) 1 x PCIe x16 (PCIe 4.0 x16) 1 x OCP 3.0 Gen5 x16	4 x PCIe x16 (PCIe 4.0 x16) 1 x PCIe x16 (PCIe 4.0 x8) 1 x PCIe x16 (PCIe 3.0 x 16 or x8) 1 x PCIe x8 (PCIe 3.0 x 0 or x8) 1 x OCP 2.0 Gen3 x16
Rear I/O	2 x USB 3.2 Gen1 1 x Mini-DP 2 x RJ45 1 x MLAN	2 x USB 3.2 Gen1 1 x Mini-DP 2 x RJ45 1 x MLAN	2 x USB 3.2 Gen1 1 x VGA 1 x COM 2 x RJ45 1 x MLAN
Security	1 x TPM header with SPI interface Optional TPM 2.0 module: CTM010	1 x TPM header with SPI interface Optional TPM 2.0 module: CTM012	1 x TPM header with SPI interface Optional TPM 2.0 module: CTM010
Power Supply Connectors	1 x 24-pin ATX main 2 x 8-pin ATX 12V 1 x 6-pin ATX 12V 1 x 4-pin 12V	1 x 24-pin ATX main 2 x 8-pin ATX 12V 1 x 6-pin ATX 12V 1 x 4-pin 12V	1 x 24-pin ATX main 2 x 8-pin ATX 12V
Board Management	ASPEED® AST2600 BMC GIGABYTE Management Console	ASPEED® AST2600 BMC GIGABYTE Management Console	ASPEED® AST2500 BMC GIGABYTE Management Console

Motherboard



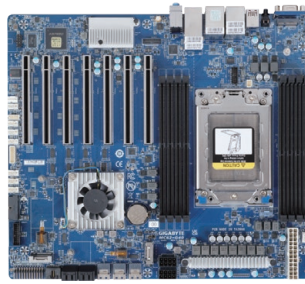
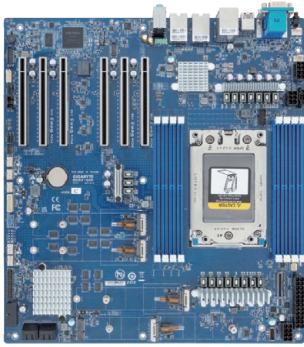
Model	ME33-AR0	ME03-CE0	ME03-CE1
Form Factor	E-ATX (W304.8 x D330.2 mm)	ATX (W304.8 x D254 mm)	ATX (W304.8 x D254 mm)
CPU	AMD EPYC™ 8004 Series Single processor, Socket SP6 cTDP up to 225W	AMD EPYC™ 8004 Series Single processor, Socket SP6 cTDP up to 225W	AMD EPYC™ 8004 Series Single processor, Socket SP6 cTDP up to 225W
Chipset	System on Chip	System on Chip	System on Chip
Memory	6-Channel RDIMM DDR5, 12 x DIMMs Up to 4800 MT/s (1DPC), 3600 MT/s (2DPC)	6-Channel RDIMM DDR5, 12 x DIMMs Up to 4800 MT/s (1DPC), 3600 MT/s (2DPC)	6-Channel RDIMM DDR5, 12 x DIMMs Up to 4800 MT/s (1DPC), 3600 MT/s (2DPC)
LAN	2 x 1Gb/s LAN 1 x MLAN	2 x 10Gb/s LAN 1 x MLAN	2 x 1Gb/s LAN 1 x MLAN
Video	Integrated in ASPEED® AST2600	Integrated in ASPEED® AST2600	Integrated in ASPEED® AST2600
Audio	N/A	N/A	N/A
Storage	2 x MCIO 8i (4 x Gen5 NVMe or 16 x SATA) 1 x MCIO 8i (2 x Gen5 NVMe) 2 x M.2 (PCIe 5.0 x4, 2280/22110)	3 x MCIO 4i (3 x Gen5 NVMe or 12 x SATAIII) 1 x M.2 (PCIe 3.0 x4, 2280/22110)	3 x MCIO 4i (3 x Gen5 NVMe or 12 x SATAIII) 1 x M.2 (PCIe 3.0 x4, 2280/22110)
Expansion Slots	3 x PCIe x16 (PCIe 5.0 x16) 1 x PCIe x16 (PCIe 4.0 x16)	3 x PCIe x16 (PCIe 5.0 x16) 1 x PCIe x16 (PCIe 4.0 x16 or x8) 1 x PCIe x16 (PCIe 4.0 x16) 1 x PCIe x16 (PCIe 4.0 x8)	3 x PCIe x16 (PCIe 5.0 x16) 1 x PCIe x16 (PCIe 4.0 x16 or x8) 1 x PCIe x16 (PCIe 4.0 x16) 1 x PCIe x16 (PCIe 4.0 x8)
Rear I/O	2 x USB 3.2 Gen1 1 x VGA 1 x COM 2 x RJ45 1 x MLAN	2 x USB 3.2 Gen1 1 x VGA 1 x COM 2 x RJ45 1 x MLAN	2 x USB 3.2 Gen1 1 x VGA 1 x COM 2 x RJ45 1 x MLAN
Security	1 x TPM header with SPI interface Optional TPM 2.0 module: CTM010	1 x TPM header with SPI interface Optional TPM 2.0 module: CTM010	1 x TPM header with SPI interface Optional TPM 2.0 module: CTM010
Power Supply Connectors	1 x 24-pin ATX main 2 x 8-pin ATX 12V 1 x 6-pin ATX 12V	1 x 24-pin ATX main 2 x 8-pin ATX 12V	1 x 24-pin ATX main 2 x 8-pin ATX 12V
Board Management	ASPEED® AST2600 BMC GIGABYTE Management Console	ASPEED® AST2600 BMC GIGABYTE Management Console	ASPEED® AST2600 BMC GIGABYTE Management Console

Motherboard



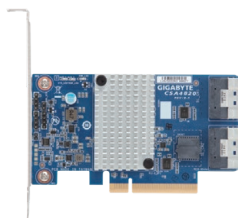
Model	ME03-PE0	MC13-LE0 (rev. 1.x/3.x)	MC13-LE1 (rev. 1.x/3.x)
Form Factor	ATX (W304.8 x D254 mm)	microATX (W244 x D244 mm)	microATX (W244 x D244 mm)
CPU	AMD EPYC™ 8004 Series Single SP6 socket cTDP up to 225W	AMD EPYC™ 4004 Series AMD Ryzen™ 7000 Series Single processor, Socket AM5 TDP up to 170W	AMD EPYC™ 4004 Series AMD Ryzen™ 7000 Series Single processor, Socket AM5 TDP up to 170W
Chipset	System on Chip	AMD B650E	AMD B650E
Memory	6-Channel RDIMM DDR5, 6 x DIMMs Up to 4800 MT/s	2-Channel DDR5 UDIMM, 4 DIMMs Up to 5200 MT/s (1DPC), 3600MT/s (2DPC)	2-Channel DDR5 UDIMM, 4 DIMMs Up to 5200 MT/s (1DPC), 3600MT/s (2DPC)
LAN	2 x 1Gb/s LAN 1 x MLAN	2 x 1Gb/s LAN 1 x MLAN	2 x 10Gb/s LAN 1 x MLAN
Video	Integrated in ASPEED® AST2600	Integrated in ASPEED® AST2600	Integrated in ASPEED® AST2600
Audio	N/A	N/A	N/A
Storage	2 x MCIO 8i (4 x Gen5 NVMe or 16 x SATAIII) 1 x M.2 (PCIe 3.0 x4, 2280/22110)	4 x SATA III 1 x M.2 (PCIe 5.0 x4, 2242/2280)	4 x SATA III 1 x M.2 (PCIe 5.0 x4, 2242/2280)
RAID	N/A	RAID 0/1/10	RAID 0/1/10
Expansion Slots	3 x PCIe x16 (PCIe 5.0 x16) 2 x PCIe x16 (PCIe 4.0 x16 or x8) 2 x PCIe x16 (PCIe 4.0 x8)	1 x PCIe x16 (PCIe 5.0 x16) 1 x PCIe x4 (PCIe 4.0 x4)	1 x PCIe x16 (PCIe 5.0 x16) 1 x PCIe x4 (PCIe 4.0 x4)
Rear I/O	2 x USB 3.2 Gen1 1 x VGA 1 x COM 2 x RJ45 1 x MLAN	2 x USB 3.2 Gen1 Type A 1 x VGA 1 x COM 2 x RJ45 1 x MLAN	2 x USB 3.2 Gen1 Type A 1 x VGA 1 x COM 2 x RJ45 1 x MLAN
Security	1 x TPM header with SPI interface Optional TPM 2.0 module: CTM010	1 x TPM header with SPI interface Optional TPM 2.0 module: CTM010	1 x TPM header with SPI interface Optional TPM 2.0 module: CTM010
Power Supply Connectors	1 x 24-pin ATX main 2 x 8-pin ATX 12V	1 x 24-pin ATX main 1 x 8-pin ATX 12V	1 x 24-pin ATX main 1 x 8-pin ATX 12V
Board Management	ASPEED® AST2600 BMC GIGABYTE Management Console	ASPEED® AST2600 BMC GIGABYTE Management Console	ASPEED® AST2600 BMC GIGABYTE Management Console

Motherboard

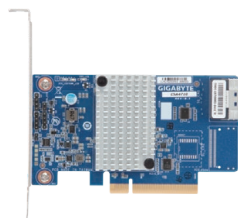


Model	MH53-G40	MC62-G40	MC62-G41
Form Factor	E-ATX (W304.8 x D330.2mm)	CEB (W305 x D267 mm)	CEB (W305 x D267 mm)
CPU	AMD Ryzen™ Threadripper™ PRO 7000 WX-Series Single processor, Socket sTR5 TDP up to 350W	AMD Ryzen™ Threadripper™ PRO 5000/3000 WX-Series Single processor, Socket sWRX8 TDP up to 280W	AMD Ryzen™ Threadripper™ PRO 5000/3000 WX-Series Single processor, Socket sWRX8 TDP up to 280W
Chipset	AMD WRX90	AMD WRX80	AMD WRX80
Memory	8-Channel DDR5 ECC RDIMM, 8 x DIMMs Up to 5200 MT/s	8-Channel DDR4 UDIMM/RDIMM/LRDIMM 8 x DIMMs, up to 3200 MT/s	8-Channel DDR4 UDIMM/RDIMM/LRDIMM 8 x DIMMs, up to 3200 MT/s
LAN	2 x 10Gb/s LAN 1 x MLAN	2 x 10Gb/s LAN 1 x 1Gb/s LAN 1 x MLAN	1 x 1Gb/s LAN 1 x MLAN
Video	Integrated in ASPEED® AST2600	Integrated in ASPEED® AST2600	Integrated in ASPEED® AST2600
Audio	Realtek® ALC897 HD Audio Codec	Realtek® ALC4080 HD audio codec	Realtek® ALC4080 HD audio codec
Storage	4 x SATA III 1 x M.2 8i (2 x Gen5 NVMe or 8 x SATA III) 4 x M.2 (PCIe 5.0 x4, 2280/22110)	4 x SATA III 3 x SlimSAS (3 x Gen4 NVMe or 12 x SATA) 2 x M.2 (PCIe 4.0 x4 or SATA III, 2242/2280)	4 x SATAIII 3 x SlimSAS (3 x Gen4 NVMe or 12 x SATA) 2 x M.2 (PCIe 4.0 x4 or SATAIII, 2242/2280)
RAID	RAID 0/1/10/5	RAID 0/1/5/10	RAID 0/1/5/10
Expansion Slots	6 x PCIe x16 (PCIe 5.0 x16) 1 x M.2 for WiFi (PCIe 3.0 x1, 2230)	6 x PCIe x16 (PCIe 4.0 x16) 1 x PCIe x16 (PCIe 4.0 x8) 1 x M.2 for WiFi (PCIe 3.0 x1, 2230)	6 x PCIe x16 (PCIe 4.0 x16) 1 x PCIe x16 (PCIe 4.0 x8) 1 x M.2 for WiFi (PCIe 3.0 x1, 2230)
Rear I/O	1 x USB 3.2 Gen2x2 Type-C 3 x USB 3.2 Gen2 Type-A 1 x VGA 1 x COM 2 x RJ45 1 x MLAN 3 x Audio jack	3 x RJ45 1 x VGA 1 x MLAN 1 x USB 3.2 Gen2 Type-C 5 x USB 3.2 Gen2 Type-A 3 x Audio jacks	1 x RJ45 1 x VGA 1 x MLAN 1 x USB 3.2 Gen2 Type-C 5 x USB 3.2 Gen2 Type-A 3 x Audio jacks
Security	1 x TPM header with SPI interface Optional TPM 2.0 module: CTM010	1 x TPM header with SPI interface Optional TPM 2.0 module: CTM010	1 x TPM header with SPI interface Optional TPM 2.0 module: CTM010
Power Supply Connectors	1 x 24-pin ATX main 2 x 8-pin ATX 12V 1 x 6-pin ATX 12V	1 x 24-pin ATX main 2 x 8-pin ATX 12V	1 x 24-pin ATX main 2 x 8-pin ATX 12V
Board Management	ASPEED® AST2600 BMC GIGABYTE Management Console	ASPEED® AST2600 BMC GIGABYTE Management Console	ASPEED® AST2600 BMC GIGABYTE Management Console

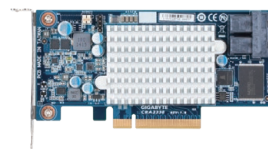
Storage Adapter



CSA4820

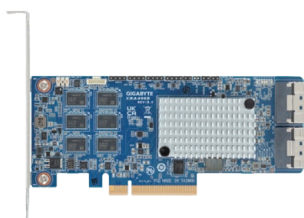


CSA4710

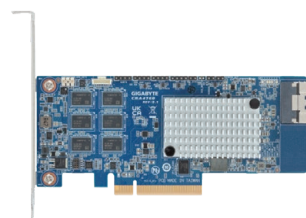


CRA3338

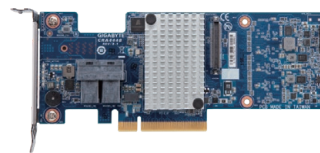
Ports	2 x SlimLine SAS 8i connectors Up to 16 x SAS/SATA physical devices Up to 4 x NVMe physical devices Max. 1024 x SAS/SATA or 32 x NVMe devices	1 x SlimLine SAS 8i connector Up to 8 x SAS/SATA physical devices Up to 2 x NVMe physical devices Max. 1024 x SAS/SATA or 32 x NVMe devices	2 x Mini-SAS HD SFF8643 connectors Up to 8 x SAS 12Gb/s ports Up to 14 x physical devices with SAS expander
Controller	Broadcom® SAS3816	Broadcom® SAS3808	Broadcom® SAS3008
RAID	Non-RAID supported	Non-RAID supported	RAID 0/1/1E/10
Interface	PCIe x8 (Gen4 x8)	PCIe x8 (Gen4 x8)	PCIe x8 (Gen3 x8)
Format	Half-length 68.9 x 120 mm	Half-length 68.9 x 120 mm	Half-length 64.4 x 167.6 mm



CRA4960 / CRA4961

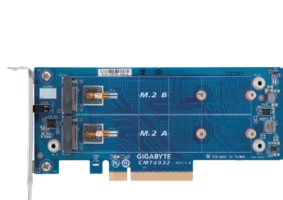


CRA4760 / CRA4761

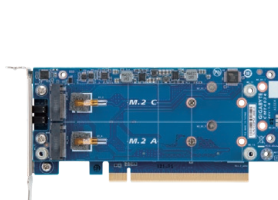


CRA4448

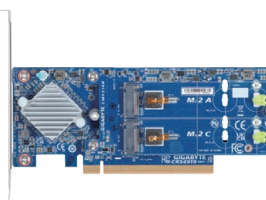
Ports	2 x Slimline SAS 8i connectors Up to 16 x SAS/SATA physical devices Up to 4 x NVMe physical devices [CRA4960] Max. 32 x SAS/SATA with SAS expander [CRA4961] Max. 240 x SAS/SATA with SAS expander	1 x Slimline SAS 8i connector Up to 8 x SAS/SATA physical devices Up to 2 x NVMe physical devices [CRA4760] Max. 32 x SAS/SATA with SAS expander [CRA4761] Max. 240 x SAS/SATA with SAS expander	2 x Internal Mini-SAS HD SFF8643 connectors Up to 8 x SAS 12Gb/s port Up to 32 x physical devices with SAS expander
Controller	Broadcom® SAS3916	Broadcom® SAS3908	Broadcom® SAS3108
RAID	Hardware RAID 0/1/1E/5/6/10/50/60 8GB 2666 MHz DDR4 cache memory (Optional) CacheVault Flash Cache Protection	Hardware RAID 0/1/1E/5/6/10/50/60 8GB 2666 MHz DDR4 cache memory (Optional) CacheVault Flash Cache Protection	Hardware RAID 0/1/5/6/10/50/60 2GB DDR3 cache memory (Optional) CacheVault Flash Cache Protection Module
Interface	PCIe x8 (Gen4 x8)	PCIe x8 (Gen4 x8)	PCIe x8 (Gen3 x8)
Format	Half-length 68.9 x 167 mm	Half-length 68.9 x 167 mm	Half-length 168 x 68.9 mm



CMT4032



CMT4034



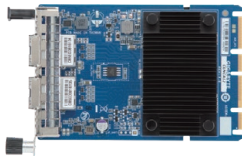
CMT3060



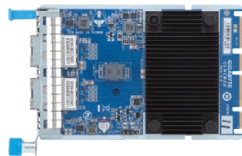
CMT3160

Ports	2 x M.2 slots M key, type 2280/22110 support PCIe SSD support only	4 x M.2 slots M key, type 2280/22110 support PCIe SSD support only	4 x M.2 slots M key, type 2280 support PCIe SSD support only	4 x M.2 slots M key, type 2280/22110 support PCIe SSD support only
Controller	-	-	Broadcom® SAS3816	Broadcom® SAS3816
RAID	-	-	RAID 0/1/10	RAID 0/1/10
Interface	PCIe x8 (Gen3 x8)	PCIe x16 (Gen3 x16)	PCIe x16 (Gen4 x8)	PCIe x16 (Gen4 x8)
Format	Low-profile 68.9 x 150 mm	Low-profile 68.9 x 150 mm	Low-profile 68.9 x 167.5 mm	Low-profile 68.9 x 197.99 mm

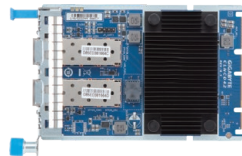
LAN Adapter



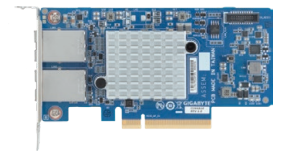
CLNCA12



CLNCB22

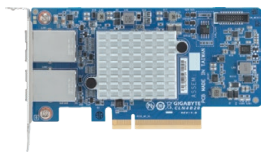


CLNCD42

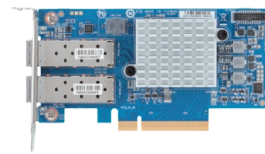


CLN4A10

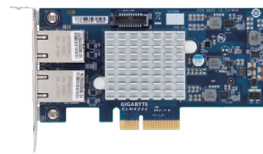
Ports	2 x 1G BASE-T RJ45 LAN ports Supports 1Gb/s, 100Mb/s, 10Mb/s	2 x 10G BASE-T RJ45 LAN ports Supports 10Gb/s, 1Gb/s per port	2 x SFP28 LAN ports Supports 25Gb/s, 10Gb/s per port	2 x 1G BASE-T RJ45 LAN ports Supports 1Gb/s, 100Mb/s, 10Mb/s
Controller	Broadcom® BCM5720	Broadcom® BCM57416	Broadcom® BCM57414	Broadcom® BCM5720
Interface	PCIe x16 (Gen2.1 x2)	PCIe x16 (Gen3 x8)	PCIe x16 (Gen3 x8)	PCIe x8 (Gen2 x2)
Format	OCP 3.0 form factor 76 x 115 x 14.2 mm	OCP 3.0 form factor 76 x 115 x 14.2 mm	OCP 3.0 form factor 76 x 115 x 14.2 mm	MD2 Low-profile 68.9 x 130 mm



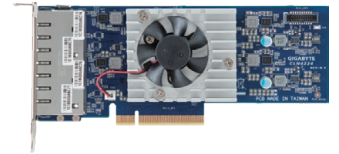
CLN4B20



CLN4D40



CLN4222



CLN4224

Ports	2 x 10G BASE-T RJ45 LAN ports Supports 10Gb/s, 1Gb/s per port	2 x SFP28 LAN ports Supports 25Gb/s, 10Gb/s, 1Gb/s	2 x 10G BASE-T RJ45 LAN ports Supports 10Gb/s, 1Gb/s per port	4 x 10G BASE-T RJ45 LAN ports Supports 10Gb/s, 1Gb/s per port
Controller	Broadcom® BCM57416	Broadcom® BCM57414	Intel® X550-AT2	2 x Intel® X550-AT2
Interface	PCIe x8 (Gen3 x8)	PCIe x8 (Gen3 x8)	PCIe x4 (Gen3 x4)	PCIe x8 (Gen3 x8)
Format	MD2 Low-profile 68.9 x 131 mm	MD2 Low-profile 68.9 x 130 mm	Half-length 68.9 x 131 mm	Half-length 68.9 x 168 mm



Ring Topology Kit

Ports	1 x 1Gb/s LAN management port
Controller	Realtek® RTL8370N-VB
Dimension	174 x 41 mm (Including chassis kit)

Management Module



TPM 2.0



TPM 2.0

Model	CTM010	CTM012
Controller	Infineon SLB9670VQ2	Infineon SLB9672VU2.0
Interface	2 x 7 pin header	2 x 7 pin header
Dimension	20 x 15 mm	20.32 x 14.73 mm

Security Module

Global After Sales Service & Support

GIGABYTE can provide the following expert services to give our customers total peace of mind:



Multi-level, multilingual telephone & online technical support

Current services provided:

Country	Service (Optional 24/7 technical support hotline available)
Global	Online support: https://esupport.gigabyte.com
Taiwan	9/5 support hotline: 0800-079-800 (Toll free) or 02-8913-1377 Live online chat: https://www.gigabyte.com/tw/Support
USA	9/5 support hotline: +1-(626)-854-9338 option 4
Europe	9/5 support hotline: +44 1256 300 809 (English, French, German, Italian, Spanish)

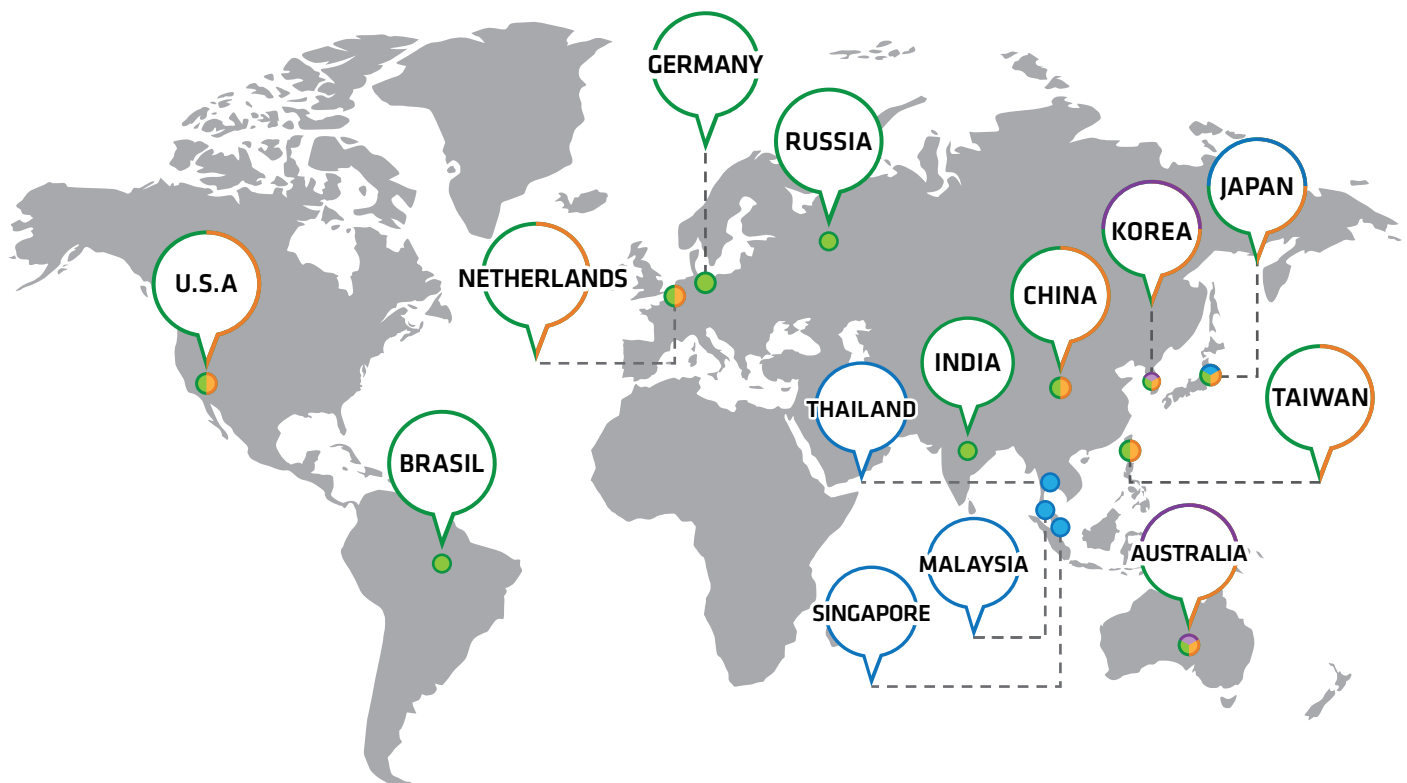


Globally located RMA & repair centers, onsite technical support services



Reverse logistics, product warehousing and component storage solutions

There is also the potential to utilize GIGABYTE's existing service and support network by request, which includes an additional 60 physical repair & support centers located in 12 additional countries.



- Logistics Hub
 - RMA / Repair Center
 - Authorized Partner Repair Center / Field Service
 - Conditional Service
- *Optional per sales condition / agreement
- *Check with sales team for detail

GIGABYTE™

E-series

R-series

H-series

S-series

G-series

Compute Leadership for the Exascale Era

Server Solutions for the AMD EPYC™ Processors

AMD 
EPYC



gigacomputing.com

 Giga Computing

 Giga Computing

 GIGABYTEServer

 GIGABYTEChannel



Designed by

- * All intellectual property rights, including without limitation to copyright and trademark of this work and its derivative works are the property of, or are licensed to, Giga Computing Technology Co., Ltd. Any unauthorized use is strictly prohibited.
- * The entire materials provided herein are for reference only. Giga Computing reserves the right to modify or revise the content at anytime without prior notice.
- * AMD, the AMD Arrow logo, EPYC, Ryzen, and combinations thereof are trademarks of Advanced Micro Devices, Inc. Other product names used in this publication are for identification purposes only and may be trademarks of their respective companies.